

For Research Use Only

# Fibulin 5 Polyclonal antibody

Catalog Number: 12188-1-AP

Featured Product

7 Publications



## Basic Information

**Catalog Number:**

12188-1-AP

**Size:**

500 µg/ml

**Source:**

Rabbit

**Isotype:**

IgG

**Immunogen Catalog Number:**

AG2859

**GenBank Accession Number:**

BC022280

**GeneID (NCBI):**

10516

**UNIPROT ID:**

Q9UBX5

**Full Name:**

fibulin 5

**Calculated MW:**

448 aa, 50 kDa

**Observed MW:**

55 kDa, 65 kDa

**Purification Method:**

Antigen affinity purification

**Recommended Dilutions:**

WB 1:1000-1:8000

IP 0.5-4.0 µg for 1.0-3.0 mg of total protein lysate

IHC 1:50-1:500

## Applications

**Tested Applications:**

IHC, IP, WB, ELISA

**Cited Applications:**

WB, IF, IHC

**Species Specificity:**

human, mouse, rat

**Cited Species:**

human, mouse

**Note-IHC: suggested antigen retrieval with TE buffer pH 9.0; (\*) Alternatively, antigen retrieval may be performed with citrate buffer pH 6.0**

**Positive Controls:**

**WB:** mouse heart tissue, rat brain tissue, mouse placenta tissue, mouse skeletal muscle tissue, mouse kidney tissue, rat heart tissue

**IP:** mouse heart tissue,

**IHC:** mouse lung tissue, human heart tissue, human pancreas tissue

## Background Information

Fibulin-5, also known as EVEC and DANCE, is a extracellular matrix glycoprotein, secreted by various cell types such as vascular smooth muscle cells, fibroblasts and endothelial cells. Structurally, Fibulin-5 contains an Arg-Gly-Asp (RGD) motif and calcium-binding EGF-like domains. It promotes adhesion of endothelial cells through interaction of integrins and the RGD motif. FBLN5 mutations have been described in patients with age-related macular degeneration, as well as being involved in Charcot-Marie-Tooth neuropathies. This antibody got 50 kDa or 66 kDa band in western blotting, the 66 kDa corresponding to fully glycosylated protein.

## Notable Publications

Author	Pubmed ID	Journal	Application
Varadarajan Sudhahar	32936699	Am J Physiol Cell Physiol	WB
Wenli Han	25428696	Cell Tissue Res	WB, IHC
Fumihiko Katagiri	35480396	JID Innov	IF

## Storage

**Storage:**

Store at -20°C. Stable for one year after shipment.

**Storage Buffer:**

PBS with 0.02% sodium azide and 50% glycerol pH 7.3.

Aliquoting is unnecessary for -20°C storage

For technical support and original validation data for this product please contact:

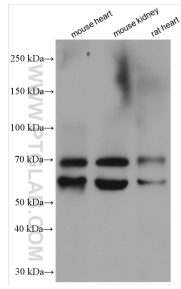
T: 4006900926

E: Proteintech-CN@ptglab.com

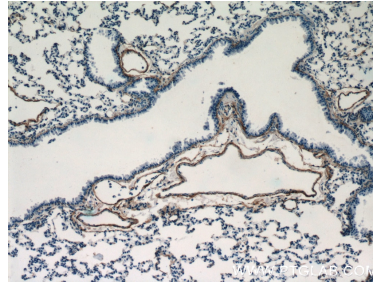
W: ptgcn.com

**This product is exclusively available under Proteintech Group brand and is not available to purchase from any other manufacturer.**

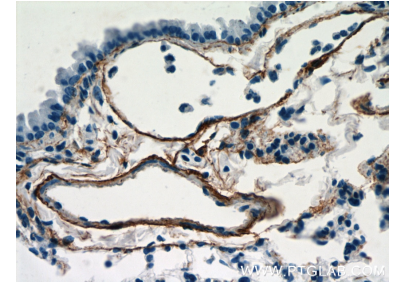
## Selected Validation Data



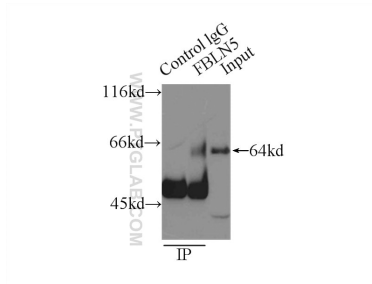
Various lysates were subjected to SDS PAGE followed by western blot with 12188-1-AP (Fibulin 5 antibody) at dilution of 1:4000 incubated at room temperature for 1.5 hours.



Immunohistochemical analysis of paraffin-embedded mouse lung tissue slide using 12188-1-AP (Fibulin 5 antibody at dilution of 1:200.



Immunohistochemical analysis of paraffin-embedded mouse lung tissue slide using 12188-1-AP (Fibulin 5 antibody at dilution of 1:200.



IP result of anti-Fibulin 5 (IP:12188-1-AP, 3ug; Detection:12188-1-AP 1:300) with mouse heart tissue lysate 8000ug.