

For Research Use Only

# Cathepsin B Polyclonal antibody

Catalog Number: 12216-1-AP

Featured Product

75 Publications



## Basic Information

### Catalog Number:

12216-1-AP

### Concentration:

600 ug/ml

### Source:

Rabbit

### Isotype:

IgG

### Immunogen Catalog Number:

AG2898

### GenBank Accession Number:

BC010240

### GeneID (NCBI):

1508

### UNIPROT ID:

P07858

### Full Name:

cathepsin B

### Calculated MW:

339 aa, 38 kDa

### Observed MW:

25 kDa, 31 kDa, 43 kDa

### Purification Method:

Antigen affinity purification

### Recommended Dilutions:

WB: 1:1000-1:4000

IHC: 1:50-1:500

IF/ICC: 1:200-1:800

FC (Intra): 0.20 ug per 10<sup>6</sup> cells in a 100 µl suspension

## Applications

### Tested Applications:

WB, IHC, IF/ICC, FC (Intra), ELISA

### Cited Applications:

WB, IHC, IF

### Species Specificity:

human

### Cited Species:

human, mouse, rat, pig, bovine, frog

**Note-IHC: suggested antigen retrieval with TE buffer pH 9.0; (\*) Alternatively, antigen retrieval may be performed with citrate buffer pH 6.0**

### Positive Controls:

WB : A375 cells, HepG2 cells, HT-1080 cells

IHC : human ovary tumor tissue, human breast cancer tissue

IF/ICC : A375 cells,

FC (Intra) : MCF-7 cells,

## Background Information

CTSB(Cathepsin B) is also named as CPSB and belongs to the peptidase C1 family. It participates in intracellular degradation and turnover of proteins. Cathepsin B precursors found in human malignant ascites fluid do not possess mannose-rich carbohydrates suggesting that a defect in the post translational processing of carbohydrate moieties on tumor. Cathepsin B exists as both glycosylated and unglycosylated forms(PMID:1637335). In rat macrophages and hepatocytes pro- cathepsin B is 39 kDa (unglycosylated=35 kDa), whereas in human fibroblasts procathepsin B is 44.5-46kDa (unglycosylated=39kDa)(PMID:2097084). It can be detected the 43 kDa form of pro-CTSB, 31 kDa and 25 kDa mature forms in mouse brain by western blot(PMID:20616152).

## Notable Publications

Author	Pubmed ID	Journal	Application
Yong Fan	34560177	Food Chem Toxicol	WB
Haiyu Zhang	36114804	Phytother Res	WB
Ling Liu	35999725	J Hazard Mater	IF

## Storage

### Storage:

Store at -20°C. Stable for one year after shipment.

### Storage Buffer:

PBS with 0.02% sodium azide and 50% glycerol, pH7.3

Aliquoting is unnecessary for -20°C storage

For technical support and original validation data for this product please contact:

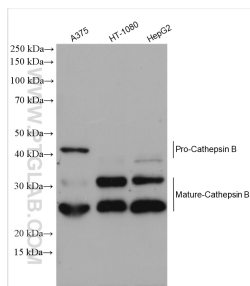
T: 4006900926

E: Proteintech-CN@ptglab.com

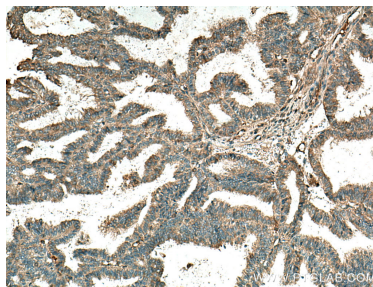
W: ptgcn.com

**This product is exclusively available under Proteintech Group brand and is not available to purchase from any other manufacturer.**

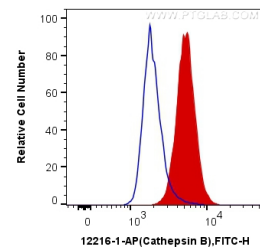
## Selected Validation Data



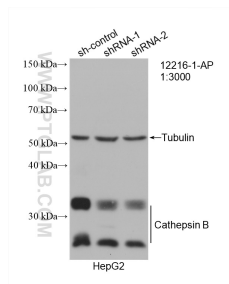
Various lysates were subjected to SDS PAGE followed by western blot with 12216-1-AP (Cathepsin B antibody) at dilution of 1:2000 incubated at room temperature for 1.5 hours.



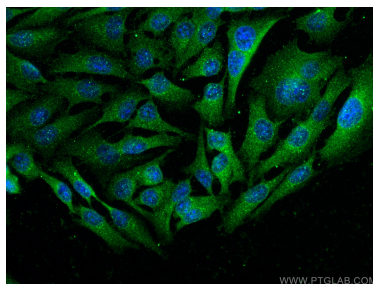
Immunohistochemical analysis of paraffin-embedded human ovary tumor tissue slide using 12216-1-AP (Cathepsin B antibody) at dilution of 1:200 (under 10x lens). Heat mediated antigen retrieval with Tris-EDTA buffer (pH 9.0).



1X10<sup>6</sup> MCF-7 cells were intracellularly stained with 0.2 ug Anti-Human Cathepsin B (12216-1-AP) and CoraLite®488-Conjugated AffiniPure Goat Anti-Rabbit IgG(H+L) at dilution 1:1000 (red), or 0.2 ug Control Antibody. Cells were fixed with 4% PFA and permeabilized with Flow Cytometry Perm Buffer (PF00011-C).



WB result of Cathepsin B antibody (12216-1-AP; 1:3000; incubated at room temperature for 1.5 hours) with sh-Control and sh-Cathepsin B transfected HepG2 cells.



Immunofluorescent analysis of (-20°C Ethanol) fixed A375 cells using Cathepsin B antibody (12216-1-AP) at dilution of 1:400 and CoraLite®488-Conjugated AffiniPure Goat Anti-Rabbit IgG(H+L).