

For Research Use Only

# SH2B1 Polyclonal antibody

Catalog Number: 12226-1-AP **1 Publications**



## Basic Information

<b>Catalog Number:</b> 12226-1-AP	<b>GenBank Accession Number:</b> BC010704	<b>Purification Method:</b> Antigen affinity purification
<b>Size:</b> 400 µg/ml	<b>GeneID (NCBI):</b> 25970	<b>Recommended Dilutions:</b> WB 1:500-1:1000
<b>Source:</b> Rabbit	<b>UNIPROT ID:</b> Q9NRF2	IP 0.5-4.0 µg for 1.0-3.0 mg of total protein lysate
<b>Isotype:</b> IgG	<b>Full Name:</b> SH2B adaptor protein 1	IHC 1:20-1:200
<b>Immunogen Catalog Number:</b> AG2863	<b>Calculated MW:</b> 426 aa, 45 kDa	IF 1:20-1:200
	<b>Observed MW:</b> 80 kDa	

## Applications

<b>Tested Applications:</b> IF/ICC, IHC, IP, WB, ELISA	<b>Positive Controls:</b> WB : HEK-293 cells, IP : HEK-293 cells, IHC : human ovary tissue, human skeletal muscle tissue IF : HeLa cells,
<b>Cited Applications:</b> WB, IF, IHC, CoIP	
<b>Species Specificity:</b> human	
<b>Cited Species:</b> human, mouse	
<b>Note-IHC: suggested antigen retrieval with TE buffer pH 9.0; (*) Alternatively, antigen retrieval may be performed with citrate buffer pH 6.0</b>	

## Background Information

SH2B1 is a member of the SH2-domain containing mediators family. SH2B1 has been shown to interact with INS receptor, Grb2, TrkA and Janus kinase 2. Variations close to or in the SH2B1 gene have been found to associate with obesity in two large genome wide association studies of body mass index (PMID: 19079260). SH2B1 deletions are associated with severe early-onset obesity (PMID: 19966786).

## Notable Publications

Author	Pubmed ID	Journal	Application
Xiaojuan Han	35390677	Redox Biol	WB, IHC, IF, CoIP

## Storage

**Storage:**  
Store at -20°C. Stable for one year after shipment.  
**Storage Buffer:**  
PBS with 0.02% sodium azide and 50% glycerol pH 7.3.  
Aliquoting is unnecessary for -20°C storage

For technical support and original validation data for this product please contact:

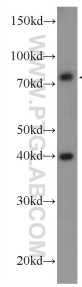
T: 4006900926

E: [Proteintech-CN@ptglab.com](mailto:Proteintech-CN@ptglab.com)

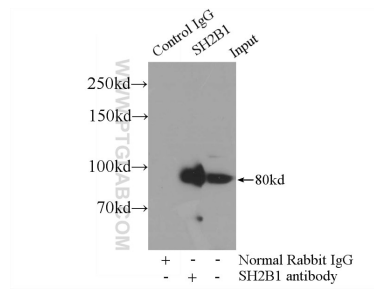
W: [ptgcn.com](http://ptgcn.com)

**This product is exclusively available under Proteintech Group brand and is not available to purchase from any other manufacturer.**

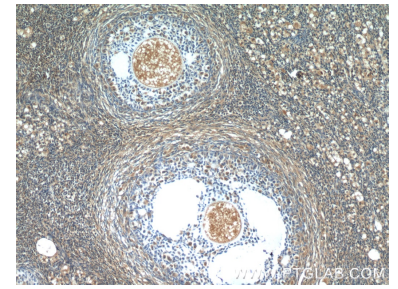
## Selected Validation Data



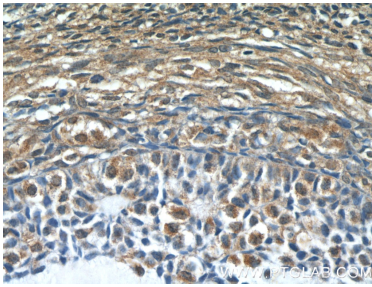
HEK-293 cells were subjected to SDS PAGE followed by western blot with 12226-1-AP (SH2B1 Antibody) at dilution of 1:600 incubated at room temperature for 1.5 hours.



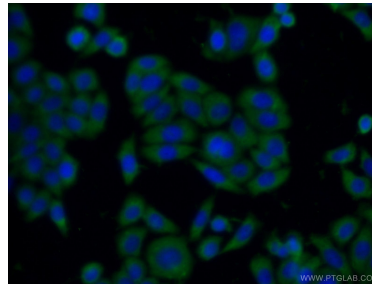
IP result of anti-SH2B1 (IP:12226-1-AP, 4ug; Detection:12226-1-AP 1:600) with HEK-293 cells lysate 3000ug.



Immunohistochemical analysis of paraffin-embedded human ovary tissue slide using 12226-1-AP (SH2B1 Antibody) at dilution of 1:50 (under 10x lens).



Immunohistochemical analysis of paraffin-embedded human ovary tissue slide using 12226-1-AP (SH2B1 Antibody) at dilution of 1:50 (under 40x lens).



Immunofluorescent analysis of HeLa cells using 12226-1-AP (SH2B1 antibody) at dilution of 1:50 and Alexa Fluor 488-conjugated AffiniPure Goat Anti-Rabbit IgG(H+L).