

For Research Use Only

# ASH2L Polyclonal antibody

Catalog Number: 12331-1-AP

Featured Product

4 Publications



## Basic Information

### Catalog Number:

12331-1-AP

### Size:

267 µg/ml

### Source:

Rabbit

### Isotype:

IgG

### Immunogen Catalog Number:

AG3008

### GenBank Accession Number:

BC015936

### GeneID (NCBI):

9070

### UNIPROT ID:

Q9UBL3

### Full Name:

ash2 (absent, small, or homeotic)-like (Drosophila)

### Calculated MW:

628 aa, 69 kDa

### Observed MW:

80 kDa

### Purification Method:

Antigen affinity purification

### Recommended Dilutions:

WB 1:500-1:2400

IP 0.5-4.0 µg for 1.0-3.0 mg of total protein lysate

IHC 1:50-1:500

## Applications

### Tested Applications:

IHC, IP, WB, ELISA

### Cited Applications:

ChIP, IF, IHC, IP, WB

### Species Specificity:

human, mouse, monkey

### Cited Species:

human, mouse

**Note-IHC: suggested antigen retrieval with TE buffer pH 9.0; (\*) Alternatively, antigen retrieval may be performed with citrate buffer pH 6.0**

### Positive Controls:

WB : COS-7 cells, COLO 320 cells

IP : COLO 320 cells,

IHC : human gliomas tissue,

## Background Information

## Notable Publications

Author	Pubmed ID	Journal	Application
Kai Zeng	32279431	Cancer Sci	WB,IHC,IF,IP,ChIP
Gongwei Wu	28474697	Nat Commun	WB
Minhan Ka	35672601	Mol Neurobiol	WB,IP

## Storage

### Storage:

Store at -20°C. Stable for one year after shipment.

### Storage Buffer:

PBS with 0.02% sodium azide and 50% glycerol pH 7.3.

Aliquoting is unnecessary for -20°C storage

For technical support and original validation data for this product please contact:

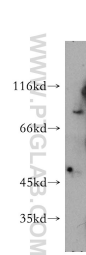
T: 4006900926

E: [Proteintech-CN@ptglab.com](mailto:Proteintech-CN@ptglab.com)

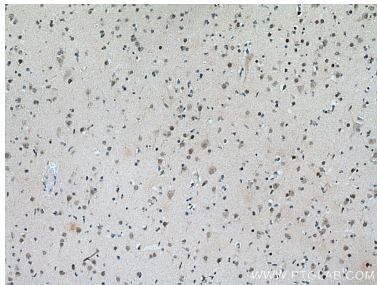
W: [ptgcn.com](http://ptgcn.com)

This product is exclusively available under Proteintech Group brand and is not available to purchase from any other manufacturer.

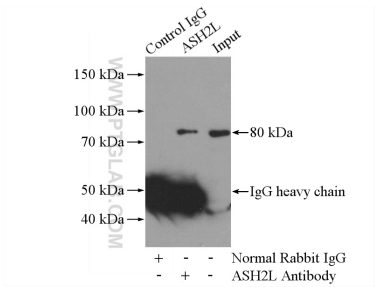
Selected Validation Data



COS-7 cells were subjected to SDS PAGE followed by western blot with 12331-1-AP (ASH2L antibody) at dilution of 1:1000 incubated at room temperature for 1.5 hours.



Immunohistochemical analysis of paraffin-embedded human gliomas tissue slide using 12331-1-AP (ASH2L antibody) at dilution of 1:200 (under 10x lens). Heat mediated antigen retrieval with Tris-EDTA buffer (pH 9.0).



IP result of anti-ASH2L (IP:12331-1-AP, 4ug; Detection:12331-1-AP 1:500) with COLO 320 cells lysate 2000ug.