

IDH1 Polyclonal antibody

Catalog Number: 12332-1-AP

Featured Product

47 Publications

Basic Information

Catalog Number:

12332-1-AP

Size:

300 µg/ml

Source:

Rabbit

Isotype:

IgG

Immunogen Catalog Number:

AG2986

GenBank Accession Number:

BC012846

GeneID (NCBI):

3417

UNIPROT ID:

O75874

Full Name:

isocitrate dehydrogenase 1 (NADP+), soluble

Calculated MW:

414 aa, 47 kDa

Observed MW:

47 kDa

Purification Method:

Antigen affinity purification

Recommended Dilutions:

WB 1:2000-1:10000

IP 0.5-4.0 µg for 1.0-3.0 mg of total protein lysate

IF 1:10-1:100

Applications

Tested Applications:

FC, IF/ICC, IP, WB, ELISA

Cited Applications:

CoIP, IF, IHC, IP, WB

Species Specificity:

human, mouse, rat

Cited Species:

human, sheep, mouse

Positive Controls:**WB** : HEK-293 cells, rat liver tissue, HeLa cells, HepG2 cells, NIH/3T3 cells**IP** : HepG2 cells,**IF** : HepG2 cells,

Background Information

IDH1, also named as PICD and IDP, belongs to the isocitrate and isopropylmalate dehydrogenases family. It is a common feature of a major subset of primary human brain cancers. It can form a homodimer (PMID:15173171). IDH1 mutation is always heterozygotic and IDH1 functions as a dimer, theoretically there will be 25% each wild type and mutant homo-dimers and 50% hetero-dimers present in the tumor cells (PMID:21079649).

Notable Publications

Author	Pubmed ID	Journal	Application
Ben Li	36290297	Biology (Basel)	WB
John P Morris	31534224	Nature	WB
Wenlong Zhao	36116152	Int Immunopharmacol	WB

Storage

Storage:

Store at -20°C. Stable for one year after shipment.

Storage Buffer:

PBS with 0.02% sodium azide and 50% glycerol pH 7.3.

Aliquoting is unnecessary for -20°C storage

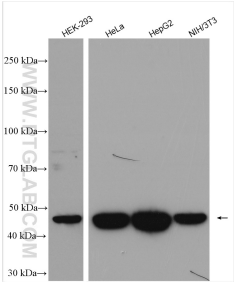
For technical support and original validation data for this product please contact:

T: 4006900926

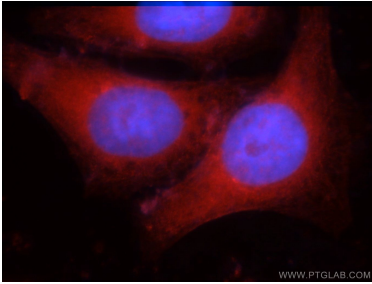
E: Proteintech-CN@ptglab.comW: ptgcn.com

This product is exclusively available under Proteintech Group brand and is not available to purchase from any other manufacturer.

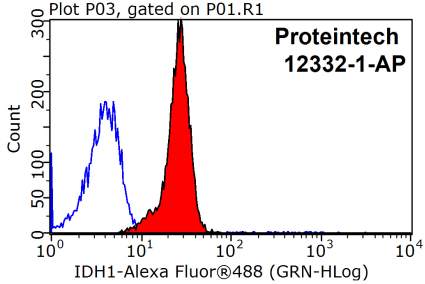
Selected Validation Data



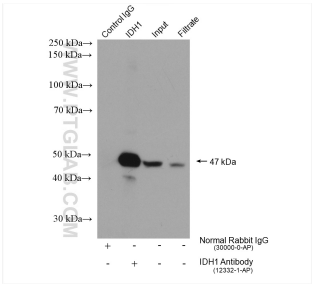
Various lysates were subjected to SDS PAGE followed by western blot with 12332-1-AP (IDH1 antibody) at dilution of 1:5000 incubated at room temperature for 1.5 hours.



Immunofluorescent analysis of HepG2 cells using 12332-1-AP (IDH1 antibody) at dilution of 1:25 and Rhodamine-Goat anti-Rabbit IgG.



1X10⁶ HeLa cells were stained with 0.2ug IDH1 antibody (12332-1-AP, red) and control antibody (blue). Fixed with 90% MeOH blocked with 3% BSA (30 min). Alexa Fluor 488-conjugated AffiniPure Goat Anti-Rabbit IgG(H+L) with dilution 1:1500.



IP result of anti-IDH1 (IP:12332-1-AP, 4ug; Detection:12332-1-AP 1:500) with HepG2 cells lysate 1880 ug.