

For Research Use Only

BBS10 Polyclonal antibody

Catalog Number: 12421-2-AP

Featured Product

3 Publications



Basic Information

Catalog Number:

12421-2-AP

Size:

500 µg/ml

Source:

Rabbit

Isotype:

IgG

Immunogen Catalog Number:

AG3073

GenBank Accession Number:

BC013795

GeneID (NCBI):

79738

UNIPROT ID:

Q8TAM1

Full Name:

Bardet-Biedl syndrome 10

Calculated MW:

81 kDa

Observed MW:

81 kDa

Purification Method:

Antigen affinity purification

Recommended Dilutions:

WB 1:500-1:1000

IF 1:20-1:200

Applications

Tested Applications:

IF, WB, ELISA

Cited Applications:

IF, WB

Species Specificity:

human

Cited Species:

human, mouse

Positive Controls:

WB : HepG2 cells, A549 cells, MCF-7 cells

IF : hTERT-RPE1 cells,

Background Information

BBS10, also named as C12orf58, belongs to the TCP-1 chaperonin family. It is probable molecular chaperone. Assists the folding of proteins upon ATP hydrolysis. As part of the BBS/CCT complex, BBS10 may play a role in the assembly of BBSome, a complex involved in ciliogenesis regulating transports vesicles to the cilia. Involved in adipogenic differentiation. (PMID:20080638,19190184) Defects in BBS10 are the cause of Bardet-Biedl syndrome type 10 (BBS10).

Notable Publications

Author	Pubmed ID	Journal	Application
Noëlle Cognard	26273430	Cilia	WB
Seo Seongjin S	20080638	Proc Natl Acad Sci U S A	WB,IF
Marion Vincent V	19190184	Proc Natl Acad Sci U S A	WB,IF

Storage

Storage:

Store at -20°C. Stable for one year after shipment.

Storage Buffer:

PBS with 0.02% sodium azide and 50% glycerol pH 7.3.

Aliquoting is unnecessary for -20°C storage

For technical support and original validation data for this product please contact:

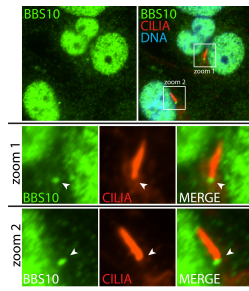
T: 4006900926

E: Proteintech-CN@ptglab.com

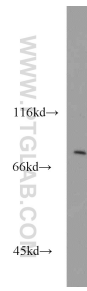
W: ptgcn.com

This product is exclusively available under Proteintech Group brand and is not available to purchase from any other manufacturer.

Selected Validation Data



IF result (nuclear and the base of cilia stain) of anti-BBS10 (12421-2-AP; 1:50) with hTERT-RPE1 cell (PFA fixed) by Dr. Moshe Kim.



HepG2 cells were subjected to SDS PAGE followed by western blot with 12421-2-AP (BBS10 antibody) at dilution of 1:800 incubated at room temperature for 1.5 hours.