

# NRF1/nuclear respiratory factor 1

## Polyclonal antibody

Catalog Number: 12482-1-AP

Featured Product

72 Publications

### Basic Information

Catalog Number:

12482-1-AP

Size:

330 µg/ml

Source:

Rabbit

Isotype:

IgG

Immunogen Catalog Number:

AG3172

GenBank Accession Number:

BC016925

GeneID (NCBI):

4899

UNIPROT ID:

Q16656

Full Name:

nuclear respiratory factor 1

Calculated MW:

522 aa, 56 kDa

Observed MW:

67 kDa, 45 kDa

Purification Method:

Antigen affinity purification

Recommended Dilutions:

WB 1:500-1:3000

### Applications

Tested Applications:

WB, ELISA

Cited Applications:

WB, IHC

Species Specificity:

human, mouse, rat

Cited Species:

human, goat, chicken, rat, mouse, ducks, zebrafish

Positive Controls:

WB : A549 cells, human lung tissue, HEK-293T cells

### Background Information

NRF1, also named as Alpha-pal and NRF-1, belongs to the NRF1/Ewg family. It is a transcription factor that activates the expression of the EIF2S1 (EIF2-alpha) gene. NRF1 is implicated in the control of nuclear genes required for respiration, heme biosynthesis, and mitochondrial DNA transcription and replication. It plays a critical role in regulating the expression of many antioxidant response element (ARE)-dependent genes. NRF1 exists various isoforms and long isoform is about 67 kDa and short isoform is about 45 kDa.

### Notable Publications

Author	Pubmed ID	Journal	Application
Longlong Li	32940033	J Agric Food Chem	WB
Bin Lou	32980394	Toxicol Appl Pharmacol	WB
Kalaiselvi Sivalingam	32978730	Mol Neurobiol	WB

### Storage

Storage:

Store at -20°C. Stable for one year after shipment.

Storage Buffer:

PBS with 0.02% sodium azide and 50% glycerol pH 7.3.

Aliquoting is unnecessary for -20°C storage

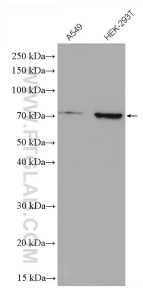
For technical support and original validation data for this product please contact:

T: 4006900926

E: [Proteintech-CN@ptglab.com](mailto:Proteintech-CN@ptglab.com)W: [ptgcn.com](http://ptgcn.com)

This product is exclusively available under Proteintech Group brand and is not available to purchase from any other manufacturer.

## Selected Validation Data



Various lysates were subjected to SDS PAGE followed by western blot with 12482-1-AP (NRF1/nuclear respiratory factor 1 antibody) at dilution of 1:1500 incubated at room temperature for 1.5 hours.