

For Research Use Only

# PDCD4 Polyclonal antibody

Catalog Number: 12587-1-AP

Featured Product

31 Publications



## Basic Information

**Catalog Number:**

12587-1-AP

**Size:**

900 µg/ml

**Source:**

Rabbit

**Isotype:**

IgG

**Immunogen Catalog Number:**

AG3288

**GenBank Accession Number:**

BC026104

**GeneID (NCBI):**

27250

**UNIPROT ID:**

Q53EL6

**Full Name:**

programmed cell death 4 (neoplastic transformation inhibitor)

**Calculated MW:**

469 aa, 52 kDa

**Observed MW:**

54-64 kDa

**Purification Method:**

Antigen affinity purification

**Recommended Dilutions:**

WB 1:1000-1:4000

IP 0.5-4.0 µg for 1.0-3.0 mg of total protein lysate

IHC 1:20-1:200

## Applications

**Tested Applications:**

FC, IHC, IP, WB, ELISA

**Cited Applications:**

WB, IHC, IF

**Species Specificity:**

human, mouse, rat

**Cited Species:**

human, rat, mouse

**Note-IHC: suggested antigen retrieval with TE buffer pH 9.0; (\*) Alternatively, antigen retrieval may be performed with citrate buffer pH 6.0**

**Positive Controls:**

**WB:** BxPC-3 cells, HEK293 cells, MCF-7 cells, HeLa cells, HEK-293 cells

**IP:** HeLa cells,

**IHC:** human breast cancer tissue,

## Background Information

Programmed cell death 4 (Pcdcd4) is a novel tumor suppressor that inhibits translation, progression and invasion. It was first identified as being differentially upregulated during apoptosis. Pcdcd4 interferes with the activity of the eukaryotic initiation factor (eIF) 4A by displacing the scaffold protein eIF4G from its binding to the RNA helicase eIF4A. The calculated molecular weight of unmodified PDCD4 protein is 52 kDa, but the modified protein is about 54-64 kDa.

## Notable Publications

Author	Pubmed ID	Journal	Application
Dong Fan	33101486	Oncol Lett	WB
Anya Alayev	25336146	J Cell Biochem	WB
Jianhua Xue	34786071	Am J Transl Res	WB

## Storage

**Storage:**

Store at -20°C. Stable for one year after shipment.

**Storage Buffer:**

PBS with 0.02% sodium azide and 50% glycerol pH 7.3.

Aliquoting is unnecessary for -20°C storage

For technical support and original validation data for this product please contact:

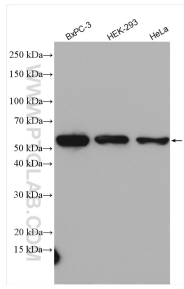
T: 4006900926

E: Proteintech-CN@ptglab.com

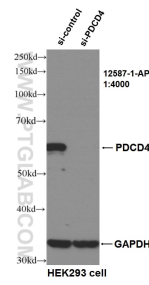
W: ptgcn.com

**This product is exclusively available under Proteintech Group brand and is not available to purchase from any other manufacturer.**

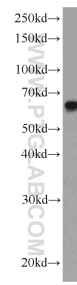
## Selected Validation Data



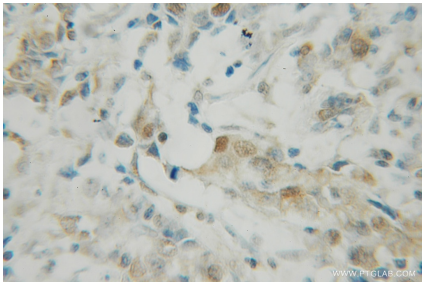
Various lysates were subjected to SDS PAGE followed by western blot with 12587-1-AP (PDCD4 antibody) at dilution of 1:2000 incubated at room temperature for 1.5 hours.



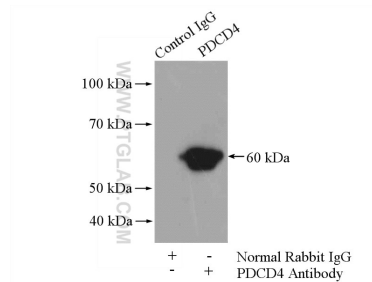
WB result of PDCD4 antibody (12587-1-AP, 1:4000) with si-control and si-PDCD4 transfected HEK293 cells.



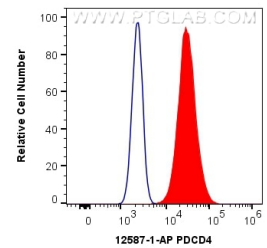
HeLa cells were subjected to SDS PAGE followed by western blot with 12587-1-AP (PDCD4 antibody) at dilution of 1:3000 incubated at room temperature for 1.5 hours.



Immunohistochemical analysis of paraffin-embedded human breast cancer using 12587-1-AP (PDCD4 antibody) at dilution of 1:50 (under 10x lens).



IP result of anti-PDCD4 (IP:12587-1-AP, 4ug; Detection:12587-1-AP 1:3000) with HeLa cells lysate 4000ug.



$1 \times 10^6$  MCF-7 cells were intracellularly stained with 0.4 ug Anti-Human PDCD4 (12587-1-AP) and CoraLite®488-Conjugated AffiniPure Goat Anti-Rabbit IgG(H+L) at dilution 1:1000 (red), or 0.4 ug Isotype Control. Cells were fixed with 4% PFA and permeabilized with Flow Cytometry Perm Buffer (PF00011-C).