

## SH2D3C Polyclonal antibody

Catalog Number: 12882-1-AP

1 Publications

## Basic Information

## Catalog Number:

12882-1-AP

## Size:

900 µg/ml

## Source:

Rabbit

## Isotype:

IgG

## Immunogen Catalog Number:

AG3887

## GenBank Accession Number:

BC027962

## GeneID (NCBI):

10044

## UNIPROT ID:

Q8N5H7

## Full Name:

SH2 domain containing 3C

## Calculated MW:

94 kDa, 86 kDa, 77 kDa

## Observed MW:

77 kDa

## Purification Method:

Antigen affinity purification

## Recommended Dilutions:

WB 1:500-1:2400

IP 0.5-4.0 µg for 1.0-3.0 mg of total protein lysate

IHC 1:20-1:200

## Applications

## Tested Applications:

IHC, IP, WB, ELISA

## Cited Applications:

WB, IP

## Species Specificity:

human, mouse, rat

## Cited Species:

rat

**Note-IHC: suggested antigen retrieval with TE buffer pH 9.0; (\*) Alternatively, antigen retrieval may be performed with citrate buffer pH 6.0**

## Positive Controls:

WB : HEK-293 cells, human brain tissue, human placenta tissue

IP : mouse brain tissue,

IHC : human breast cancer tissue,

## Background Information

SH2 domain-containing protein 3C (SH2D3C, or NSP3) gene encodes an adaptor protein and member of a cytoplasmic protein family involved in cell migration. The encoded protein was identified as an Eph receptor-binding protein which may be a positive regulator of TCR signaling (PMID: 10542222). SH2D3C is an adaptor protein that has been implicated in T cell activation and shown to associate with different components of the integrin signaling pathway ex vivo, moreover, its primary in vivo role of Sh2d3c in regulating B cell development and function has also been demonstrated (PMID: 20505138). SH2D3C has 6 isoforms with MW 94, 86, 77 and 55 kDa (refer to UniProt).

## Notable Publications

Author	Pubmed ID	Journal	Application
Fujiya Gomi	29966723	Neuroscience	WB,IP

## Storage

## Storage:

Store at -20°C. Stable for one year after shipment.

## Storage Buffer:

PBS with 0.02% sodium azide and 50% glycerol pH 7.3.

Aliquoting is unnecessary for -20°C storage

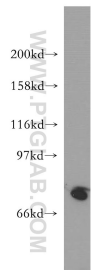
For technical support and original validation data for this product please contact:

T: 4006900926

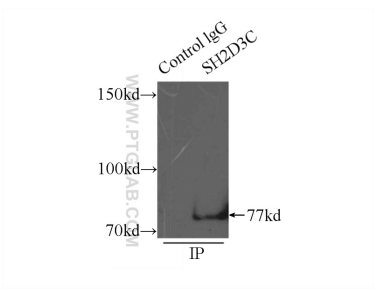
E: [Proteintech-CN@ptglab.com](mailto:Proteintech-CN@ptglab.com)W: [ptgcn.com](http://ptgcn.com)

This product is exclusively available under Proteintech Group brand and is not available to purchase from any other manufacturer.

Selected Validation Data

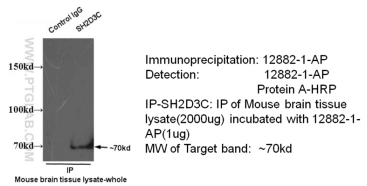


HEK-293 cells were subjected to SDS PAGE followed by western blot with 12882-1-AP (SH2D3C antibody) at dilution of 1:300 incubated at room temperature for 1.5 hours.

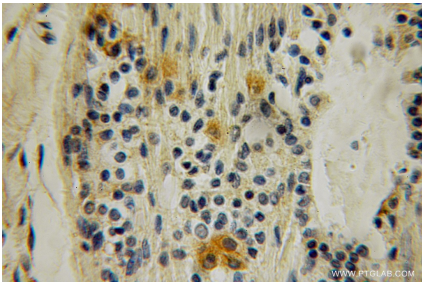


IP result of anti-SH2D3C (IP:12882-1-AP, 3ug; Detection:12882-1-AP 1:500) with mouse brain tissue lysate 6000ug.

IP & WB of 12882-1-AP with Mouse brain tissue



IP result of SH2D3C antibody (12882-1-AP for IP and Detection) with mouse brain tissue lysate.



Immunohistochemical analysis of paraffin-embedded human breast cancer using 12882-1-AP (SH2D3C antibody) at dilution of 1:100 (under 10x lens).