

For Research Use Only

# MYL4 Polyclonal antibody

Catalog Number: 13229-1-AP



## Basic Information

### Catalog Number:

13229-1-AP

### Size:

350 µg/ml

### Source:

Rabbit

### Isotype:

IgG

### Immunogen Catalog Number:

AG4031

### GenBank Accession Number:

BC030228

### GeneID (NCBI):

4635

### UNIPROT ID:

P12829

### Full Name:

myosin, light chain 4, alkali; atrial, embryonic

### Calculated MW:

197 aa, 22 kDa

### Observed MW:

22-30 kDa

### Purification Method:

Antigen affinity purification

### Recommended Dilutions:

WB 1:500-1:2000

## Applications

### Tested Applications:

WB, ELISA

### Species Specificity:

human, mouse, rat

### Positive Controls:

WB : human liver tissue,

## Background Information

Myosin light - chain 4 (MYL4) encodes an essential myosin light chain that is expressed in embryonic whole heart and skeletal muscle. It is specifically expressed in human atria after birth. MYL4 is essential for atrial electrical, functional, and structural integrity, and MYL4 dysfunction can produce severe inherited atrial cardiomyopathy.

## Storage

### Storage:

Store at -20°C. Stable for one year after shipment.

### Storage Buffer:

PBS with 0.02% sodium azide and 50% glycerol pH 7.3.

Aliquoting is unnecessary for -20°C storage

For technical support and original validation data for this product please contact:

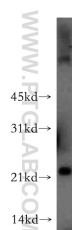
T: 4006900926

E: [Proteintech-CN@ptglab.com](mailto:Proteintech-CN@ptglab.com)

W: [ptgcn.com](http://ptgcn.com)

This product is exclusively available under Proteintech Group brand and is not available to purchase from any other manufacturer.

## Selected Validation Data



human liver tissue were subjected to SDS PAGE followed by western blot with 13229-1-AP (MYL4 antibody) at dilution of 1:400 incubated at room temperature for 1.5 hours.