

For Research Use Only

# ATP2C1 Polyclonal antibody

Catalog Number: 13310-1-AP **3 Publications**



## Basic Information

**Catalog Number:**

13310-1-AP

**Size:**

350 µg/ml

**Source:**

Rabbit

**Isotype:**

IgG

**Immunogen Catalog Number:**

AG4143

**GenBank Accession Number:**

BC028139

**GeneID (NCBI):**

27032

**UNIPROT ID:**

P98194

**Full Name:**

ATPase, Ca<sup>++</sup> transporting, type 2C, member 1

**Calculated MW:**

919 aa, 101 kDa

**Observed MW:**

95-103 kDa

**Purification Method:**

Antigen affinity purification

**Recommended Dilutions:**

WB 1:500-1:3000

IP 0.5-4.0 µg for 1.0-3.0 mg of total protein lysate

IHC 1:50-1:500

IF 1:20-1:200

## Applications

**Tested Applications:**

IF/ICC, IHC, IP, WB, ELISA

**Cited Applications:**

WB

**Species Specificity:**

human, mouse, rat

**Cited Species:**

human, mouse

**Positive Controls:**

**WB:** A431 cells, human brain tissue, HeLa cells, rat brain tissue

**IP:** mouse kidney tissue,

**IHC:** mouse brain tissue,

**IF:** HeLa cells,

**Note-IHC: suggested antigen retrieval with TE buffer pH 9.0; (\*) Alternatively, antigen retrieval may be performed with citrate buffer pH 6.0**

## Background Information

ATP2C1, also known as hSPCA1, belongs to the family of P-type cation transport ATPases. ATP2C1 is a Golgi-localized ATPase that mediates Golgi uptake of cytosolic Ca<sup>2+</sup> and Mg<sup>2+</sup> and has a role in regulating Ca<sup>2+</sup> and Mn<sup>2+</sup> cellular content (PMID: 11741891). ATP2C1 is found in most tissues except colon, thymus, spleen, and leukocytes. It is expressed in keratinocytes (PMID: 15831496, 14632183). Defects in ATP2C1 cause Hailey-Hailey disease (HHD)(PMID: 10615129, 28035777).

## Notable Publications

Author	Pubmed ID	Journal	Application
Peiyao Li	36254249	Clin Cosmet Investig Dermatol	WB
Hongfu Xie	34239867	Front Cell Dev Biol	WB
Shaona Li	37550659	BMC Pulm Med	WB

## Storage

**Storage:**

Store at -20°C. Stable for one year after shipment.

**Storage Buffer:**

PBS with 0.02% sodium azide and 50% glycerol pH 7.3.

Aliquoting is unnecessary for -20°C storage

For technical support and original validation data for this product please contact:

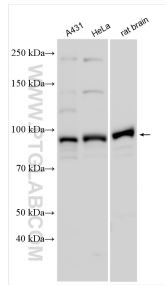
T: 4006900926

E: Proteintech-CN@ptglab.com

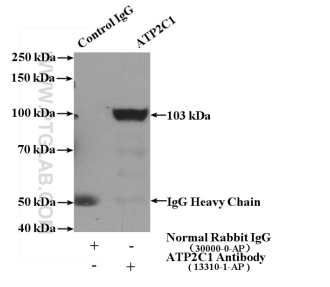
W: ptgcn.com

**This product is exclusively available under Proteintech Group brand and is not available to purchase from any other manufacturer.**

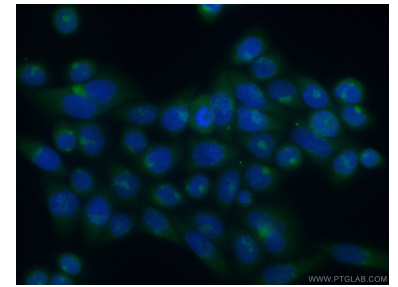
## Selected Validation Data



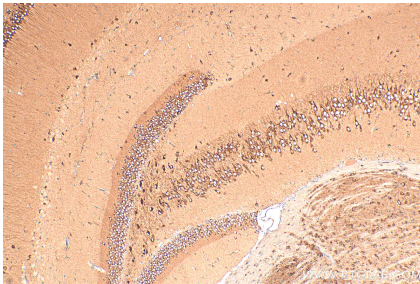
Various lysates were subjected to SDS PAGE followed by western blot with 13310-1-AP (ATP2C1 antibody) at dilution of 1:1500 incubated at room temperature for 1.5 hours.



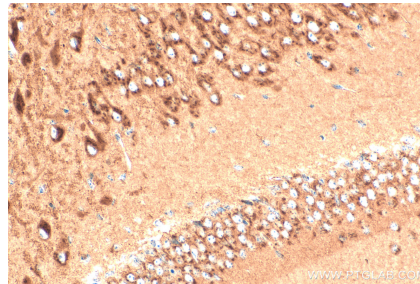
IP result of anti-ATP2C1 (IP:13310-1-AP, 4ug; Detection:13310-1-AP 1:500) with mouse kidney tissue lysate 4000ug.



Immunofluorescent analysis of (10% Formaldehyde) fixed HeLa cells using 13310-1-AP (ATP2C1 antibody) at dilution of 1:50 and Alexa Fluor 488-conjugated AffiniPure Goat Anti-Rabbit IgG(H+L).



Immunohistochemical analysis of paraffin-embedded mouse brain tissue slide using 13310-1-AP (ATP2C1 antibody) at dilution of 1:200 (under 10x lens). Heat mediated antigen retrieval with Tris-EDTA buffer (pH 9.0).



Immunohistochemical analysis of paraffin-embedded mouse brain tissue slide using 13310-1-AP (ATP2C1 antibody) at dilution of 1:200 (under 40x lens). Heat mediated antigen retrieval with Tris-EDTA buffer (pH 9.0).