

For Research Use Only

CISD2 Polyclonal antibody

Catalog Number: 13318-1-AP

Featured Product

32 Publications



Basic Information

Catalog Number:

13318-1-AP

Source:

Rabbit

Isotype:

IgG

Immunogen Catalog Number:

AG4172

GenBank Accession Number:

BC032300

GeneID (NCBI):

493856

UNIPROT ID:

Q8N5K1

Full Name:

CDGSH iron sulfur domain 2

Calculated MW:

135 aa, 15 kDa

Observed MW:

13-15 kDa

Purification Method:

Antigen affinity purification

Recommended Dilutions:

WB: 1:2000-1:10000

IP: 0.5-4.0 ug for 1.0-3.0 mg of total protein lysate

IHC: 1:50-1:500

IF/ICC: 1:200-1:800

FC (Intra): 0.25 ug per 10⁶ cells in a 100 µl suspension

Applications

Tested Applications:

WB, IHC, IF/ICC, FC (Intra), IP, ELISA

Cited Applications:

WB, IHC, IF, IP, CoIP

Species Specificity:

human, mouse, rat

Cited Species:

human, mouse, rat, drosophila

Note-IHC: suggested antigen retrieval with TE buffer pH 9.0; (*) Alternatively, antigen retrieval may be performed with citrate buffer pH 6.0

Positive Controls:

WB: mouse kidney tissue, mouse brain tissue, mouse heart tissue, human brain tissue, rat kidney tissue

IP: mouse brain tissue,

IHC: human liver cancer tissue,

IF/ICC: HepG2 cells,

FC (Intra): HepG2 cells,

Background Information

CISD2 gene encodes a 15 kDa CDGSH iron-sulfur domain-containing protein 2, which is also named Miner1 or NAF-1, this protein was reported on the endoplasmic reticulum membrane or mitochondrion outer membrane. Defects in CISD2 are the cause of Wolfram syndrome type 2 (WFS2), a rare disorder characterized by juvenile-onset insulin-dependent diabetes mellitus with optic atrophy. CISD2 regulates the autophagy program by interacting with BCL2, contributing to antagonizing BECN1-mediated cellular autophagy at the endoplasmic reticulum.

Notable Publications

Author	Pubmed ID	Journal	Application
Luxin Liu	25134919	Med Oncol	WB,IHC
Bin Chen	26722601	Int J Clin Exp Pathol	WB,IHC
Simin Lu	25422446	Proc Natl Acad Sci U S A	WB

Storage

Storage:

Store at -20°C. Stable for one year after shipment.

Storage Buffer:

PBS with 0.02% sodium azide and 50% glycerol, pH7.3

Aliquoting is unnecessary for -20°C storage

For technical support and original validation data for this product please contact:

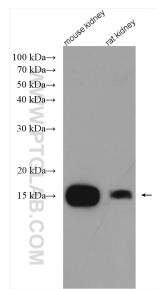
T: 4006900926

E: Proteintech-CN@ptglab.com

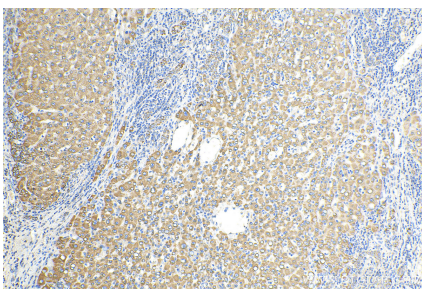
W: ptgcn.com

This product is exclusively available under Proteintech Group brand and is not available to purchase from any other manufacturer.

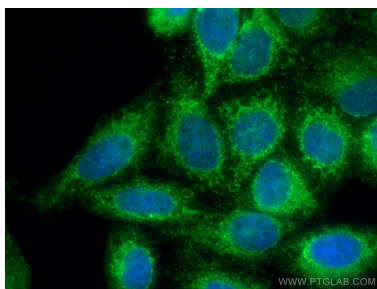
Selected Validation Data



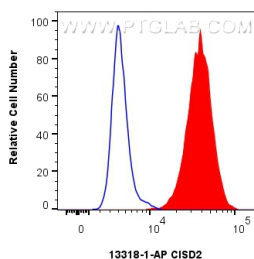
Various lysates were subjected to SDS PAGE followed by western blot with 13318-1-AP (CISD2 antibody) at dilution of 1:5000 incubated at room temperature for 1.5 hours.



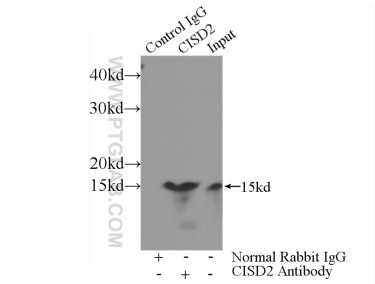
Immunohistochemical analysis of paraffin-embedded human liver cancer tissue slide using 13318-1-AP (CISD2 antibody) at dilution of 1:200 (under 10x lens). Heat mediated antigen retrieval with Tris-EDTA buffer (pH 9.0).



Immunofluorescent analysis of (4% PFA) fixed HepG2 cells using CISD2 antibody (13318-1-AP) at dilution of 1:400 and CoraLite®488-Conjugated AffiniPure Goat Anti-Rabbit IgG(H+L).



1x10⁶ HepG2 cells were intracellularly stained with 0.25 ug CISD2 Polyclonal antibody (13318-1-AP) and CoraLite®488-Conjugated Goat Anti-Rabbit IgG(H+L) (SA00013-2)(red), or 0.25 ug rabbit IgG isotype control (blue). Cells were fixed with 4% PFA and permeabilized with Flow Cytometry Perm Buffer.



IP result of anti-CISD2 (IP:13318-1-AP, 3ug; Detection:13318-1-AP 1:700) with mouse brain tissue lysate 4000ug.