

For Research Use Only

ACTL7B Polyclonal antibody

Catalog Number: 13537-1-AP **2 Publications**



Basic Information

Catalog Number: 13537-1-AP	GenBank Accession Number: BC033789	Purification Method: Antigen affinity purification
Size: 300 µg/ml	GeneID (NCBI): 10880	Recommended Dilutions: WB 1:500-1:3000 IHC 1:20-1:200
Source: Rabbit	UNIPROT ID: Q9Y614	
Isotype: IgG	Full Name: actin-like 7B	
Immunogen Catalog Number: AG4460	Calculated MW: 415 aa, 45 kDa	
	Observed MW: 45 kDa	

Applications

Tested Applications: IHC, WB, ELISA	Positive Controls:
Cited Applications: WB	WB : human testis tissue, human liver tissue, mouse testis tissue
Species Specificity: human, mouse, rat	IHC : human prostate cancer tissue,
Cited Species: human, mouse	
Note-IHC: suggested antigen retrieval with TE buffer pH 9.0; (*) Alternatively, antigen retrieval may be performed with citrate buffer pH 6.0	

Background Information

ACTL7B is also named as actin-like-7-beta. The protein encoded by this gene is a member of a family of actin-related proteins (ARPs) which share significant amino acid sequence identity to conventional actins. The ARPs are involved in diverse cellular processes, including vesicular transport, spindle orientation, nuclear migration and chromatin remodeling. The ACTL7B gene is expressed predominantly in the testis, however, its exact function is not known. Diseases associated with ACTL7B include Dysautonomia and Hypertensive Nephropathy. An important paralog of this gene is ACTL7A. ACTL7B can be detected as 45 kDa.

Notable Publications

Author	Pubmed ID	Journal	Application
Gina E Merges	37800308	Development	WB
Brian P Hermann	30404016	Cell Rep	

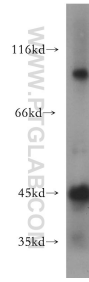
Storage

Storage:
Store at -20°C. Stable for one year after shipment.
Storage Buffer:
PBS with 0.02% sodium azide and 50% glycerol pH 7.3.
Aliquoting is unnecessary for -20°C storage

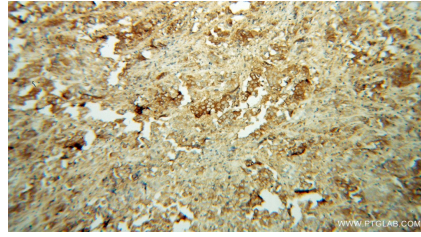
For technical support and original validation data for this product please contact:
T: 4006900926 E: Proteintech-CN@ptglab.com W: ptgcn.com

This product is exclusively available under Proteintech Group brand and is not available to purchase from any other manufacturer.

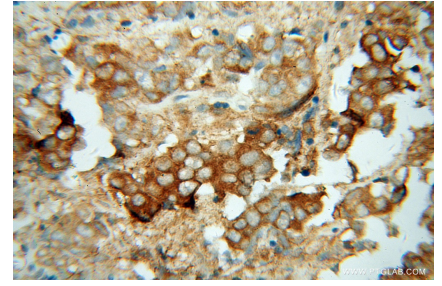
Selected Validation Data



human testis tissue were subjected to SDS PAGE followed by western blot with 13537-1-AP (ACTL7B antibody) at dilution of 1:300 incubated at room temperature for 1.5 hours.



Immunohistochemical analysis of paraffin-embedded human prostate cancer using 13537-1-AP (ACTL7B antibody) at dilution of 1:100 (under 10x lens).



Immunohistochemical analysis of paraffin-embedded human prostate cancer using 13537-1-AP (ACTL7B antibody) at dilution of 1:100 (under 40x lens).