

For Research Use Only

RPS3A Polyclonal antibody

Catalog Number: 14123-1-AP

Featured Product

7 Publications



Basic Information

Catalog Number:

14123-1-AP

Size:

350 µg/ml

Source:

Rabbit

Isotype:

IgG

Immunogen Catalog Number:

AG5273

GenBank Accession Number:

BC066926

GeneID (NCBI):

6189

UNIPROT ID:

P61247

Full Name:

ribosomal protein S3A

Calculated MW:

30 kDa

Observed MW:

35 kDa

Purification Method:

Antigen affinity purification

Recommended Dilutions:

WB 1:1000-1:8000

IP 0.5-4.0 µg for 1.0-3.0 mg of total protein lysate

IHC 1:20-1:200

Applications

Tested Applications:

FC, IHC, IP, WB, ELISA

Cited Applications:

IF, IHC, WB

Species Specificity:

human, mouse, rat

Cited Species:

human, mouse, Xenopus

Note-IHC: suggested antigen retrieval with TE buffer pH 9.0; (*) Alternatively, antigen retrieval may be performed with citrate buffer pH 6.0

Positive Controls:

WB: HeLa cells, A431 cells, Jurkat cells, A549 cells, HepG2 cells, Raji cells

IP: HeLa cells,

IHC: human pancreas cancer tissue,

Background Information

RPS3a, a component of the ribosomal small subunit (40S), is a member of the A20 family of the deubiquitinating cysteine proteases. RPS3a is an inducing factor for oncogenic cellular transformation of Rat-1 cells by v-fos, and is highly expressed in most tumors including hepatocellular carcinoma and other cancers. On the other hand, RPS3a has also been described as a regulator of apoptosis and transcription factors

Notable Publications

| Author | Pubmed ID | Journal | Application |
|-------------------|-----------|---------------------|-------------|
| Sipeng Li | 34265469 | Mol Cell Proteomics | WB |
| Jean-Michel Cioni | 30612743 | Cell | IF |
| Yan Tang | 30131868 | Cell Discov | WB,IHC,IF |

Storage

Storage:

Store at -20°C. Stable for one year after shipment.

Storage Buffer:

PBS with 0.02% sodium azide and 50% glycerol pH 7.3.

Aliquoting is unnecessary for -20°C storage

For technical support and original validation data for this product please contact:

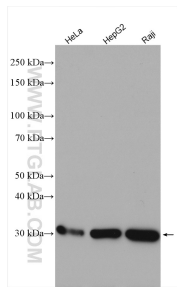
T: 4006900926

E: Proteintech-CN@ptglab.com

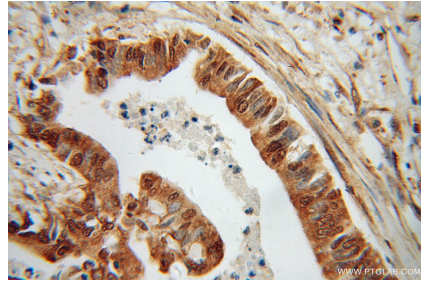
W: ptgcn.com

This product is exclusively available under Proteintech Group brand and is not available to purchase from any other manufacturer.

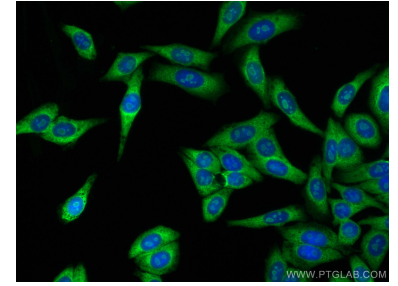
Selected Validation Data



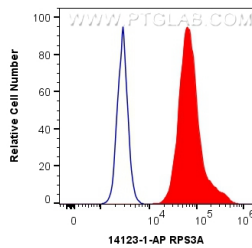
Various lysates were subjected to SDS PAGE followed by western blot with 14123-1-AP (RPS3A antibody) at dilution of 1:4000 incubated at room temperature for 1.5 hours.



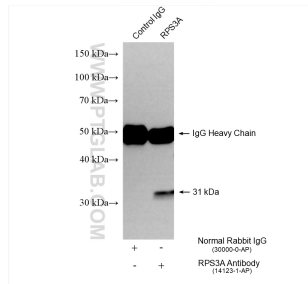
Immunohistochemical analysis of paraffin-embedded human pancreas cancer using 14123-1-AP (RPS3A antibody) at dilution of 1:100 (under 40x lens).



Immunofluorescent analysis of (4% PFA) fixed HepG2 cells using RPS3A antibody (14123-1-AP) at dilution of 1:200 and CoraLite®488-Conjugated AffiniPure Goat Anti-Rabbit IgG(H+L).



1X10⁶ HepG2 cells were intracellularly stained with 0.5 ug Anti-Human RPS3A (14123-1-AP) and CoraLite®488-Conjugated AffiniPure Goat Anti-Rabbit IgG(H+L) at dilution 1:1000 (red), or 0.5 ug Control Antibody. Cells were fixed with 4% PFA and permeabilized with Flow Cytometry Perm Buffer (PF00011-C).



IP result of anti-RPS3A (IP:14123-1-AP, 4ug; Detection:14123-1-AP 1:6000) with HeLa cells lysate 1600 ug.