

For Research Use Only

S100A9 Polyclonal antibody

Catalog Number: 14226-1-AP

Featured Product

7 Publications



Basic Information

Catalog Number:

14226-1-AP

Size:

500 µg/ml

Source:

Rabbit

Isotype:

IgG

Immunogen Catalog Number:

AG5465

GenBank Accession Number:

BC047681

GeneID (NCBI):

6280

UNIPROT ID:

P06702

Full Name:

S100 calcium binding protein A9

Calculated MW:

13 kDa

Observed MW:

14 kDa, 28 kDa

Purification Method:

Antigen affinity purification

Recommended Dilutions:

WB 1:200-1:1000

IHC 1:50-1:500

Applications

Tested Applications:

IHC, WB, ELISA

Cited Applications:

IF, IHC, WB

Species Specificity:

human, mouse, rat

Cited Species:

human, rat, mouse

Note-IHC: suggested antigen retrieval with TE buffer pH 9.0; (*) Alternatively, antigen retrieval may be performed with citrate buffer pH 6.0

Positive Controls:

WB: mouse spleen tissue, human blood, human heart tissue, MCF-7 cells, mouse heart tissue, rat heart tissue

IHC: human breast cancer tissue, human tonsillitis tissue

Background Information

S100A9 is a calcium binding protein as a member of the S100 family of proteins. S100 proteins are low molecular weight (9 to 14 kDa) intracellular calcium-binding proteins that control key cellular pathways including regulation of the cytoskeleton, cell migration and adhesion, and host oxidative defense. S100A9 may exist as a homodimer, heterodimer (24 kDa) with an S100A8 partner (S100A8/A9), or as a heterotetramer (28 kDa) with an S100A8 partner (S100A8/A9). S100A8 and S100A9 are found intracellularly in granulocytes, monocytes, and early differentiation stages of macrophages.

Notable Publications

Author	Pubmed ID	Journal	Application
Ran Wei	33205453	Int J Cancer	IHC,IF
Qiang Liu	35525986	Cell Biosci	WB,IHC
Hong Huang	35582423	Int J Med Sci	IF

Storage

Storage:

Store at -20°C. Stable for one year after shipment.

Storage Buffer:

PBS with 0.02% sodium azide and 50% glycerol pH 7.3.

Aliquoting is unnecessary for -20°C storage

For technical support and original validation data for this product please contact:

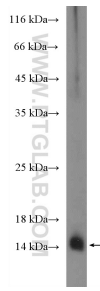
T: 4006900926

E: Proteintech-CN@ptglab.com

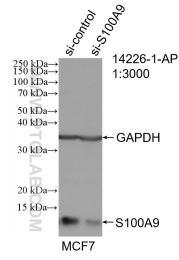
W: ptgcn.com

This product is exclusively available under Proteintech Group brand and is not available to purchase from any other manufacturer.

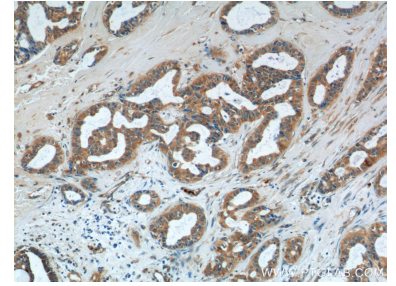
Selected Validation Data



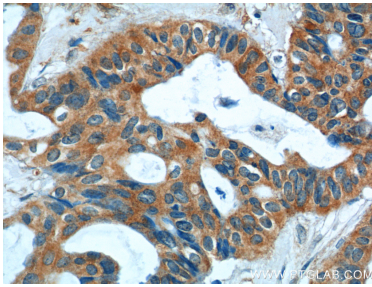
mouse spleen tissue were subjected to SDS PAGE followed by western blot with 14226-1-AP (S100A9 Antibody) at dilution of 1:300 incubated at room temperature for 1.5 hours.



WB result of S100A9 antibody (14226-1-AP; 1:3000; incubated at room temperature for 1.5 hours) with sh-Control and sh-S100A9 transfected MCF-7 cells.



Immunohistochemical analysis of paraffin-embedded human breast cancer tissue slide using 14226-1-AP (S100A9 Antibody) at dilution of 1:200 (under 10x lens).



Immunohistochemical analysis of paraffin-embedded human breast cancer tissue slide using 14226-1-AP (S100A9 Antibody) at dilution of 1:200 (under 40x lens).