

For Research Use Only

# NEK2 Polyclonal antibody

Catalog Number: 14233-1-AP **2 Publications**



## Basic Information

**Catalog Number:**

14233-1-AP

**Size:**

850 µg/ml

**Source:**

Rabbit

**Isotype:**

IgG

**Immunogen Catalog Number:**

AG5474

**GenBank Accession Number:**

BC043502

**GeneID (NCBI):**

4751

**UNIPROT ID:**

P51955

**Full Name:**

NIMA (never in mitosis gene a)-related kinase 2

**Calculated MW:**

52 kDa

**Observed MW:**

45-52 kDa

**Purification Method:**

Antigen affinity purification

**Recommended Dilutions:**

WB 1:500-1:2000

IF 1:10-1:100

## Applications

**Tested Applications:**

IF/ICC, WB, ELISA

**Cited Applications:**

IF, WB

**Species Specificity:**

human, mouse, rat

**Cited Species:**

human

**Positive Controls:**

WB : HEK-293T cells, K-562 cells, Jurkat cells

IF : HeLa cells,

## Background Information

### Notable Publications

| Author     | Pubmed ID | Journal           | Application |
|------------|-----------|-------------------|-------------|
| Tianyu Wu  | 36395215  | Science           | IF          |
| Yilin Wang | 37739411  | Nucleic Acids Res | WB          |

## Storage

**Storage:**

Store at -20°C. Stable for one year after shipment.

**Storage Buffer:**

PBS with 0.02% sodium azide and 50% glycerol pH 7.3.

Aliquoting is unnecessary for -20°C storage

For technical support and original validation data for this product please contact:

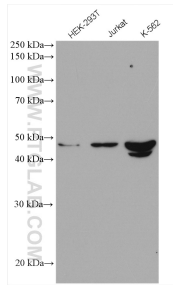
T: 4006900926

E: [Proteintech-CN@ptglab.com](mailto:Proteintech-CN@ptglab.com)

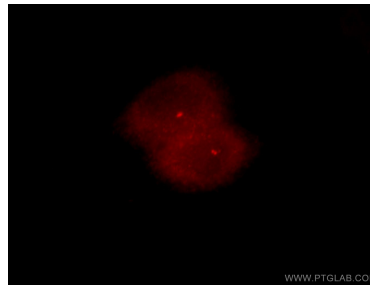
W: [ptgcn.com](http://ptgcn.com)

**This product is exclusively available under Proteintech Group brand and is not available to purchase from any other manufacturer.**

## Selected Validation Data



Various lysates were subjected to SDS PAGE followed by western blot with 14233-1-AP (NEK2 antibody) at dilution of 1:2000 incubated at room temperature for 1.5 hours.



Immunofluorescent analysis of HeLa cells, using NEK2 antibody 14233-1-AP at 1:25 dilution and Rhodamine-labeled goat anti-rabbit IgG (red).