

NR2E3 Polyclonal antibody

Catalog Number: 14246-1-AP

Featured Product

6 Publications

Basic Information

Catalog Number:

14246-1-AP

Size:

450 µg/ml

Source:

Rabbit

Isotype:

IgG

Immunogen Catalog Number:

AG5503

GenBank Accession Number:

BC041421

GeneID (NCBI):

10002

UNIPROT ID:

Q9Y5X4

Full Name:

nuclear receptor subfamily 2, group E, member 3

Calculated MW:

45 kDa

Observed MW:

43-45 kDa

Purification Method:

Antigen affinity purification

Recommended Dilutions:

WB 1:2000-1:12000

IHC 1:20-1:200

IF 1:20-1:100

Applications

Tested Applications:

FC, IF, IHC, WB, ELISA

Cited Applications:

WB, IHC

Species Specificity:

human, mouse, rat, pig

Cited Species:

human, mouse, zebrafish

Note-IHC: suggested antigen retrieval with TE buffer pH 9.0; (*) Alternatively, antigen retrieval may be performed with citrate buffer pH 6.0

Positive Controls:

WB: mouse retina tissue, Y79 cells, HepG2 cells, rat retina tissue

IHC: human prostate cancer tissue,

IF: photoreceptor progenitor cells,

Background Information

NR2E3, also known as PNR, encodes a retinal nuclear receptor that is a ligand-dependent transcription factor. This protein is part of a large family of nuclear receptor transcription factors involved in signaling pathways. NR2E3 influences the development of photoreceptors and their differentiation into rod and cone types, and acts as a transcriptional factor that is an activator of rod development and repressor of cone development [PMID:20725840]. It binds the promoter region of a number of rod- and cone-specific genes, including rhodopsin, M- and S-opsin and rod-specific phosphodiesterase beta subunit. [PMID:15689355]

Notable Publications

Author	Pubmed ID	Journal	Application
Tilak Khanal	28878246	Sci Rep	WB
Cho Kyoung-In KI	23818861	PLoS Genet	IHC
Kyoung-In Cho	24403063	J Biol Chem	WB

Storage

Storage:

Store at -20°C. Stable for one year after shipment.

Storage Buffer:

PBS with 0.02% sodium azide and 50% glycerol pH 7.3.

Aliquoting is unnecessary for -20°C storage

For technical support and original validation data for this product please contact:

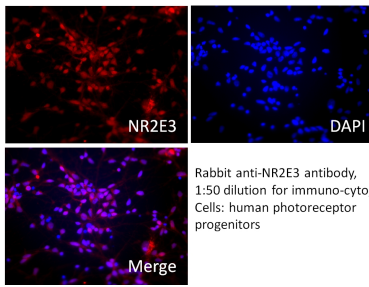
T: 4006900926

E: Proteintech-CN@ptglab.com

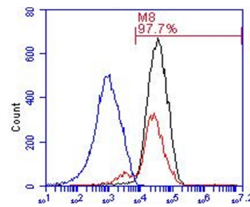
W: ptgcn.com

This product is exclusively available under Proteintech Group brand and is not available to purchase from any other manufacturer.

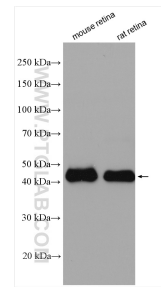
Selected Validation Data



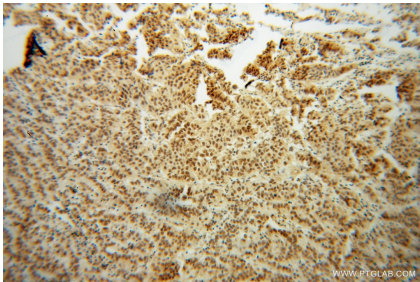
IF result of NR2E3 antibody (14246-1-AP, 1:50) with human photoreceptor progenitors cells.



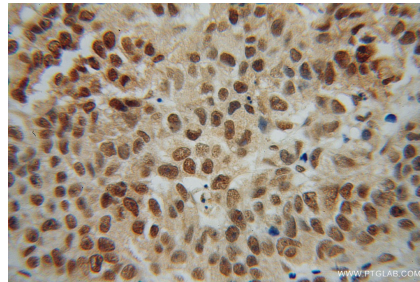
Rabbit anti-NR2E3 antibody, 1:100 dilution for FACS, Cells: human photoreceptor progenitors, Blue, isotype control; Black=passage 2; Red=passage 4.



Various lysates were subjected to SDS PAGE followed by western blot with 14246-1-AP (NR2E3 antibody) at dilution of 1:6000 incubated at room temperature for 1.5 hours.



Immunohistochemical analysis of paraffin-embedded human prostate cancer using 14246-1-AP (NR2E3 antibody) at dilution of 1:100 (under 10x lens).



Immunohistochemical analysis of paraffin-embedded human prostate cancer using 14246-1-AP (NR2E3 antibody) at dilution of 1:100 (under 40x lens).