

For Research Use Only

ATP1A1 Polyclonal antibody

Catalog Number: 14418-1-AP

Featured Product

238 Publications



Basic Information

Catalog Number:

14418-1-AP

Concentration:

800 ug/ml

Source:

Rabbit

Isotype:

IgG

Immunogen Catalog Number:

AG5763

GenBank Accession Number:

BC050359

GeneID (NCBI):

476

ENSEMBL Gene ID:

ENSG00000163399

UNIPROT ID:

P05023

Full Name:

ATPase, Na⁺/K⁺ transporting, alpha 1 polypeptide

Calculated MW:

113 kDa

Observed MW:

100-110 kDa

Purification Method:

Antigen affinity purification

Recommended Dilutions:

WB: 1:20000-1:100000

IP: 0.5-4.0 ug for 1.0-3.0 mg of total protein lysate

IHC: 1:1000-1:4000

IF/ICC: 1:400-1:1600

FC (Intra): 0.40 ug per 10⁶ cells in a 100 µl suspension

ColP: 0.5-4.0 ug for 1.0-3.0 mg of total protein lysate

Applications

Tested Applications:

WB, IHC, IF/ICC, FC (Intra), IP, ColP, ELISA

Cited Applications:

WB, IHC, IF, IP, ColP

Species Specificity:

human, mouse, rat

Cited Species:

human, mouse, rat, pig, chicken

Note-IHC: suggested antigen retrieval with TE buffer pH 9.0; (*) Alternatively, antigen retrieval may be performed with citrate buffer pH 6.0

Positive Controls:

WB : 37°C incubated mouse brain tissue, HEK-293 cells, 37°C incubated HEK-293 cells

IP : HEK-293 cells, A431 cells

IHC : human ovary tumor tissue, human cervical cancer tissue, human colon tissue, human liver cancer tissue

IF/ICC : Caco-2 cells, HEK-293 cells

FC (Intra) : HEK-293 cells,

ColP : A431 cells,

Background Information

ATP1A1 is the catalytic component of Na⁺/K⁺-ATPase which is a membrane bound enzyme primarily involved in generation of Na⁺ and K⁺ gradients across plasma membranes and in determination of cytoplasmic Na⁺ levels. ATP1A1 is a ubiquitously expressed membrane protein and often used as the marker or internal control for plasma membrane protein. For optimal WB detection of this membrane protein, we recommend to avoid boiling the sample after lysis.

Notable Publications

Author	Pubmed ID	Journal	Application
Zhen-Ning Lu	31568987	Biomed Pharmacother	WB
Raphael Berges	30250248	Cell Death Dis	WB
Hideaki Kuge	32963038	J Lipid Res	WB

Storage

Storage:

Store at -20°C. Stable for one year after shipment.

Storage Buffer:

PBS with 0.02% sodium azide and 50% glycerol, pH7.3

Aliquoting is unnecessary for -20°C storage

For technical support and original validation data for this product please contact:

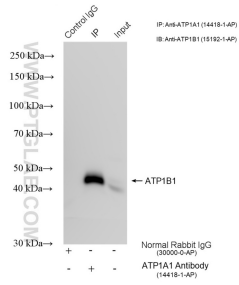
T: 4006900926

E: Proteintech-CN@ptglab.com

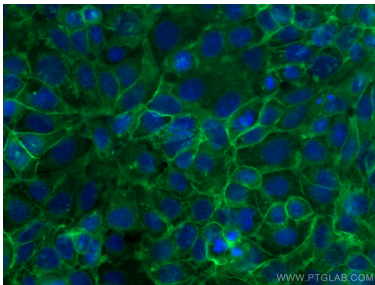
W: ptgcn.com

This product is exclusively available under Proteintech Group brand and is not available to purchase from any other manufacturer.

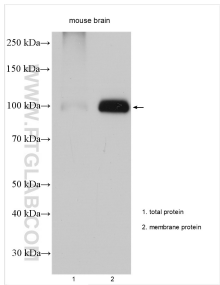
Selected Validation Data



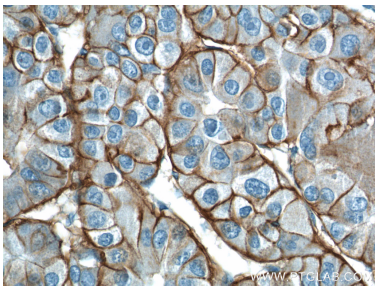
Co-IP result of anti-ATP1A1 (IP:14418-1-AP, 4ug; Detection:15192-1-AP 1:5000) with A431 cells lysate 1000ug.



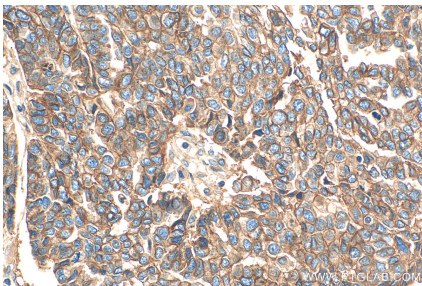
Immunofluorescent analysis of (-20°C Methanol) fixed Caco-2 cells using ATP1A1 antibody (14418-1-AP) at dilution of 1:800 and CoraLite®488-Conjugated AffiniPure Goat Anti-Rabbit IgG(H+L).



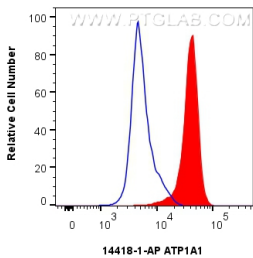
37°C incubated mouse brain total extract lysate and membrane extract lysate were subjected to SDS PAGE followed by western blot with 14418-1-AP (ATP1A1 antibody) at dilution of 1:100000 incubated at room temperature for 1.5 hours.



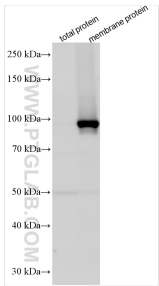
Immunohistochemical analysis of paraffin-embedded human liver cancer tissue slide using 14418-1-AP (ATP1A1 Antibody) at dilution of 1:200 (under 40x lens).



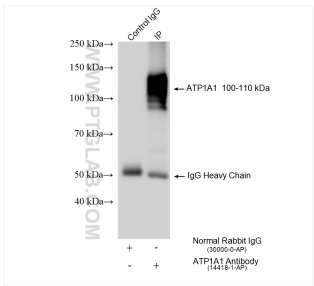
Immunohistochemical analysis of paraffin-embedded human ovary tumor tissue slide using 14418-1-AP (ATP1A1 antibody) at dilution of 1:2000 (under 40x lens). Heat mediated antigen retrieval with Tris-EDTA buffer (pH 9.0).



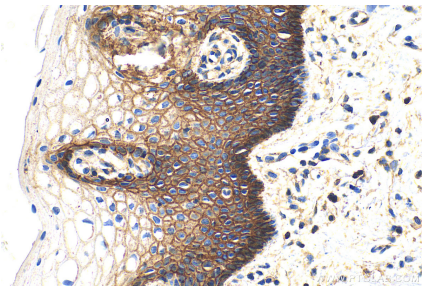
1x10⁶ HEK-293 cells were intracellularly stained with 0.4 ug ATP1A1 Polyclonal antibody (14418-1-AP) and CoraLite®488-Conjugated Goat Anti-Rabbit IgG(H+L) (SA00013-2)(red), or 0.4 ug Rabbit IgG control Rabbit PolyAb (30000-O-AP) (blue). Cells were fixed with 4% PFA and permeabilized with Flow Cytometry Perm Buffer (PF00011-C).



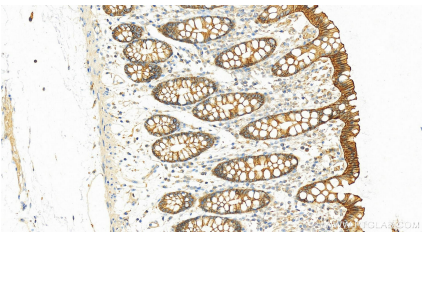
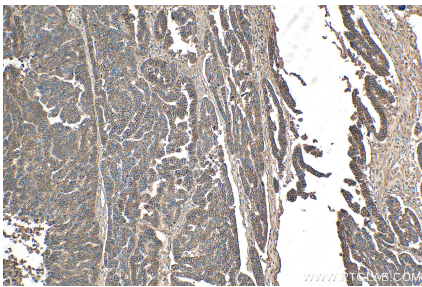
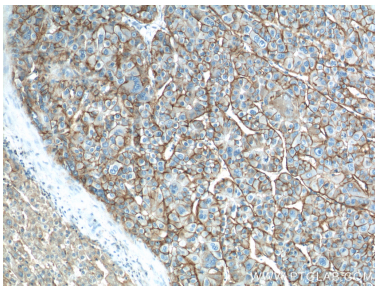
37°C incubated HEK-293 membrane extract lysate were subjected to SDS PAGE followed by western blot with 14418-1-AP (ATP1A1 antibody) at dilution of 1:100000 incubated at room temperature for 1.5 hours.



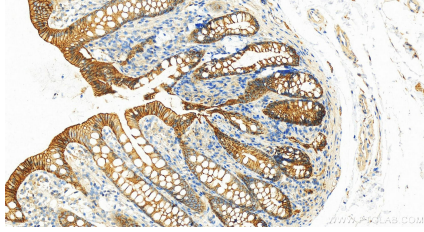
IP result of anti-ATP1A1 (IP:14418-1-AP, 4ug; Detection:14418-1-AP 1:20000) with HEK-293 cells lysate 1470 ug.



Immunohistochemical analysis of paraffin-embedded human cervical cancer tissue slide using 14418-1-AP (ATP1A1 antibody) at dilution of 1:2000 (under 40x lens). Heat mediated antigen retrieval with Tris-EDTA buffer (pH 9.0).

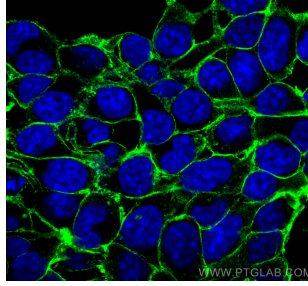


Immunohistochemical analysis of paraffin-embedded human liver cancer tissue slide using 14418-1-AP (ATP1A1 Antibody) at dilution of 1:200 (under 10x lens).



Immunohistochemical analysis of paraffin-embedded human normal colon slide using 14418-1-AP (ATP1A1 antibody) at dilution of 1:2000 (under 20x lens). Heat mediated antigen retrieval with Tris-EDTA buffer (pH 9.0).

Immunohistochemical analysis of paraffin-embedded human ovary tumor tissue slide using 14418-1-AP (ATP1A1 antibody) at dilution of 1:2000 (under 10x lens). Heat mediated antigen retrieval with Tris-EDTA buffer (pH 9.0).



Immunofluorescent analysis of (-20°C Methanol) fixed HEK-293 cells using ATP1A1 antibody (14418-1-AP) at dilution of 1:200 and CoraLite® 488-Conjugated AffiniPure Goat Anti-Rabbit IgG(H+L).

Immunohistochemical analysis of paraffin-embedded human normal colon slide using 14418-1-AP (ATP1A1 antibody) at dilution of 1:2000 (under 20x lens). Heat mediated antigen retrieval with Tris-EDTA buffer (pH 9.0).