

For Research Use Only

# TAX1BP1 Polyclonal antibody

Catalog Number: 14424-1-AP

Featured Product

15 Publications



## Basic Information

Catalog Number:

14424-1-AP

Size:

1000  $\mu$ g/ml

Source:

Rabbit

Isotype:

IgG

Immunogen Catalog Number:

AG5789

GenBank Accession Number:

BC050358

GeneID (NCBI):

8887

UNIPROT ID:

Q86VP1

Full Name:

Tax1 (human T-cell leukemia virus type I) binding protein 1

Calculated MW:

91 kDa

Observed MW:

90 kDa

Purification Method:

Antigen affinity purification

Recommended Dilutions:

WB 1:1000-1:5000

IF 1:10-1:100

## Applications

Tested Applications:

IF/ICC, WB, ELISA

Cited Applications:

IF, WB

Species Specificity:

human, mouse

Cited Species:

human, mouse

Positive Controls:

WB : A549 cells, HeLa cells, HepG2 cells

IF : HepG2 cells,

## Background Information

TAX1BP1 (also named as T6BP and TXBP151) inhibits TNF-induced apoptosis by mediating the TNFAIP3 anti-apoptotic activity. It is degraded by caspase-3-like family proteins upon TNF-induced apoptosis. TAX1BP1 may also play a role in the pro-inflammatory cytokine IL-1 signaling cascade. TAX1BP1 binds TRAF6 but not TRAFs 1-5.

## Notable Publications

Author	Pubmed ID	Journal	Application
Jing-Ying Li	36274483	Int Immunopharmacol	WB
Jiajia Pan	35618171	Fish Shellfish Immunol	WB
Wenxian Wu	33779513	Autophagy	WB

## Storage

Storage:

Store at -20°C. Stable for one year after shipment.

Storage Buffer:

PBS with 0.02% sodium azide and 50% glycerol pH 7.3.

Aliquoting is unnecessary for -20°C storage

For technical support and original validation data for this product please contact:

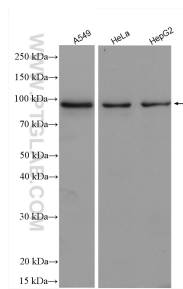
T: 4006900926

E: [Proteintech-CN@ptglab.com](mailto:Proteintech-CN@ptglab.com)

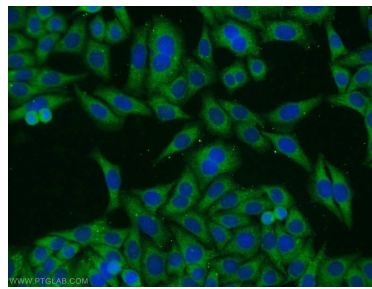
W: [ptgcn.com](http://ptgcn.com)

This product is exclusively available under Proteintech Group brand and is not available to purchase from any other manufacturer.

## Selected Validation Data



Various lysates were subjected to SDS PAGE followed by western blot with 14424-1-AP (TAX1BP1 antibody) at dilution of 1:2500 incubated at room temperature for 1.5 hours.



Immunofluorescent analysis of HepG2 cells using 14424-1-AP (TAX1BP1 antibody) at dilution of 1:25 and Alexa Fluor 488-conjugated AffiniPure Goat Anti-Rabbit IgG(H+L).