

For Research Use Only

Apolipoprotein AI Polyclonal antibody



Catalog Number: 14427-1-AP

32 Publications

Basic Information

Catalog Number: 14427-1-AP	GenBank Accession Number: BC005380	Purification Method: Antigen affinity purification
Size: 700 µg/ml	GeneID (NCBI): 335	Recommended Dilutions: WB 1:500-1:2000 IHC 1:50-1:500 IF 1:200-1:800
Source: Rabbit	UNIPROT ID: P02647	
Isotype: IgG	Full Name: apolipoprotein A-I	
Immunogen Catalog Number: AG5793	Calculated MW: 31 kDa	
	Observed MW: 26-30 kDa	

Applications

Tested Applications:
FC, IF/ICC, IHC, WB, ELISA

Cited Applications:
IF, IHC, IP, WB

Species Specificity:
human

Cited Species:
human, mouse

Note-IHC: suggested antigen retrieval with TE buffer pH 9.0; (*) Alternatively, antigen retrieval may be performed with citrate buffer pH 6.0

Positive Controls:

WB: human blood tissue, human brain tissue, human plasma, human ileum tissue

IHC: human liver cancer tissue, human liver tissue, human lung tissue

IF: HepG2 cells, HeLa cells

Background Information

ApoA1 is a major protein component of high density lipoproteins (HDL) which is associated with reversed cholesterol transport, lipid/cholesterol binding, lecithin/cholesterol acyltransferase (LCAT) activation and specific receptors binding. It is synthesized in the liver and small intestine. Defects of ApoA1 cause low HDL level and systemic non-neuropathic amyloidosis. Serum concentration of ApoA1 is inversely related to the risk of developing atherosclerosis. This antibody was generated against the C-terminal region of human ApoA1.

Notable Publications

Author	Pubmed ID	Journal	Application
Jiaqi Li	29285103	Exp Ther Med	WB
Te Bu	34815799	Theranostics	WB
Rui Xiang Chen	36203339	Liver Int	WB,IHC,IF

Storage

Storage:
Store at -20°C. Stable for one year after shipment.
Storage Buffer:
PBS with 0.02% sodium azide and 50% glycerol pH 7.3.
Aliquoting is unnecessary for -20°C storage

For technical support and original validation data for this product please contact:

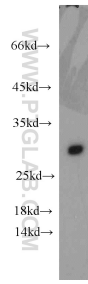
T: 4006900926

E: Proteintech-CN@ptglab.com

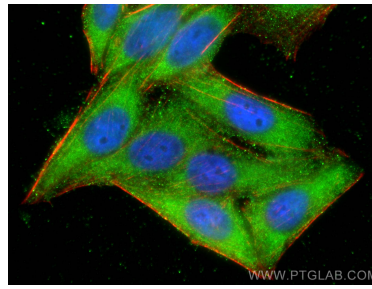
W: ptgcn.com

This product is exclusively available under Proteintech Group brand and is not available to purchase from any other manufacturer.

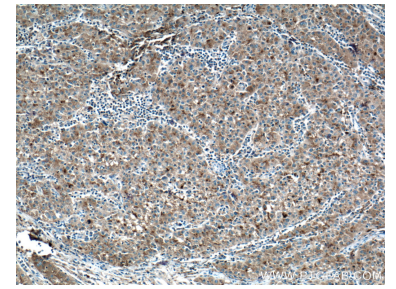
Selected Validation Data



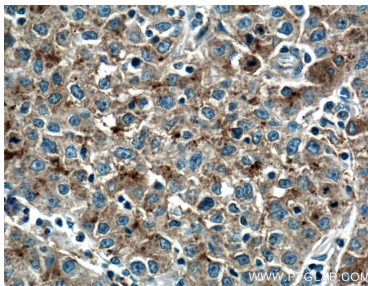
human blood were subjected to SDS PAGE followed by western blot with 14427-1-AP (Apolipoprotein AI antibody) at dilution of 1:1000 incubated at room temperature for 1.5 hours.



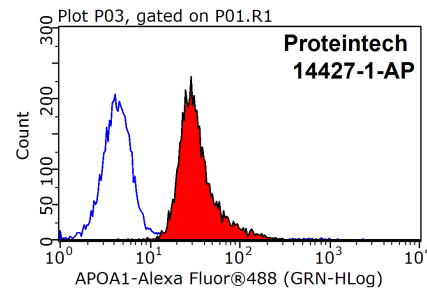
Immunofluorescent analysis of (-20°C Ethanol) fixed HepG2 cells using Apolipoprotein AI antibody (14427-1-AP) at dilution of 1:400 and CoraLite®488-Conjugated AffiniPure Goat Anti-Rabbit IgG(H+L), CL594-Phalloidin (red).



Immunohistochemical analysis of paraffin-embedded human liver cancer tissue slide using 14427-1-AP (Apolipoprotein AI antibody at dilution of 1:200 (under 10x lens). Heat mediated antigen retrieval with Tris-EDTA buffer (pH 9.0).



Immunohistochemical analysis of paraffin-embedded human liver cancer tissue slide using 14427-1-AP (Apolipoprotein AI antibody at dilution of 1:200 (under 40x lens). Heat mediated antigen retrieval with Tris-EDTA buffer (pH 9.0).



1X10⁶ HepG2 cells were stained with 0.2ug Apolipoprotein AI antibody (14427-1-AP, red) and control antibody (blue). Fixed with 90% MeOH blocked with 3% BSA (30 min). Alexa Fluor 488-conjugated AffiniPure Goat Anti-Rabbit IgG(H+L) with dilution 1:1500.

Immunofluorescent analysis of (-20°C Methanol) fixed HeLa cells using Apolipoprotein AI antibody (14427-1-AP) at dilution of 1:400 and CoraLite®488-Conjugated AffiniPure Goat Anti-Rabbit IgG(H+L).