

For Research Use Only

GLUD2 Polyclonal antibody

Catalog Number: 14462-1-AP

Featured Product

3 Publications



Basic Information

Catalog Number:

14462-1-AP

Size:

650 µg/ml

Source:

Rabbit

Isotype:

IgG

Immunogen Catalog Number:

AG5748

GenBank Accession Number:

BC050732

GeneID (NCBI):

2747

UNIPROT ID:

P49448

Full Name:

glutamate dehydrogenase 2

Calculated MW:

61 kDa

Observed MW:

50-60 kDa

Purification Method:

Antigen affinity purification

Recommended Dilutions:

WB 1:1000-1:8000

IHC 1:20-1:200

IF 1:20-1:200

Applications

Tested Applications:

IF/ICC, IHC, WB, ELISA

Cited Applications:

IHC, WB

Species Specificity:

human, mouse, rat

Cited Species:

human

Note-IHC: suggested antigen retrieval with TE buffer pH 9.0; (*) Alternatively, antigen retrieval may be performed with citrate buffer pH 6.0

Positive Controls:

WB : mouse eye tissue, HepG2 cells, rat testis tissue

IHC : human prostate cancer tissue,

IF : HepG2 cells,

Background Information

Notable Publications

Author	Pubmed ID	Journal	Application
Chunhong Cui	34283311	Amino Acids	WB
Xuyong Wei	35430532	Transl Oncol	IHC
Pei Wang	37872351	Nat Metab	WB

Storage

Storage:

Store at -20°C. Stable for one year after shipment.

Storage Buffer:

PBS with 0.02% sodium azide and 50% glycerol pH 7.3.

Aliquoting is unnecessary for -20°C storage

For technical support and original validation data for this product please contact:

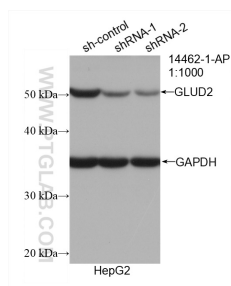
T: 4006900926

E: Proteintech-CN@ptglab.com

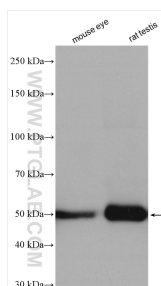
W: ptgcn.com

This product is exclusively available under Proteintech Group brand and is not available to purchase from any other manufacturer.

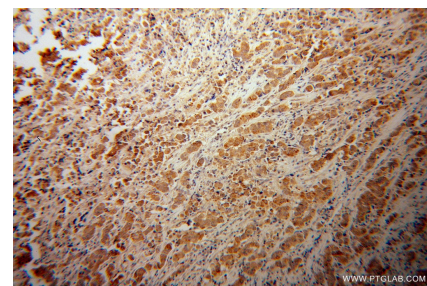
Selected Validation Data



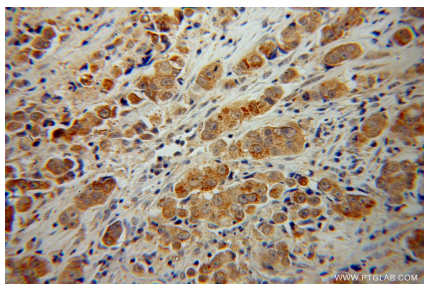
WB result of GLUD2 antibody (14462-1-AP; 1:1000; incubated at room temperature for 1.5 hours) with sh-Control and sh-GLUD2 transfected HepG2 cells.



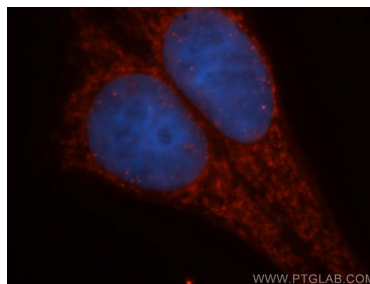
Various lysates were subjected to SDS PAGE followed by western blot with 14462-1-AP (GLUD2 antibody) at dilution of 1:4000 incubated at room temperature for 1.5 hours.



Immunohistochemical analysis of paraffin-embedded human prostate cancer using 14462-1-AP (GLUD2 antibody) at dilution of 1:100 (under 10x lens).



Immunohistochemical analysis of paraffin-embedded human prostate cancer using 14462-1-AP (GLUD2 antibody) at dilution of 1:100 (under 40x lens).



Immunofluorescent analysis of HepG2 cells, using GLUD2 antibody 14462-1-AP at 1:50 dilution and Rhodamine-labeled goat anti-rabbit IgG (red). Blue pseudocolor = DAPI (fluorescent DNA dye).