

## CREB3L2 Polyclonal antibody

Catalog Number: 14514-1-AP

5 Publications

## Basic Information

## Catalog Number:

14514-1-AP

## Size:

600 µg/ml

## Source:

Rabbit

## Isotype:

IgG

## Immunogen Catalog Number:

AG5973

## GenBank Accession Number:

BC063666

## GeneID (NCBI):

64764

## UNIPROT ID:

Q70SY1

## Full Name:

cAMP responsive element binding protein 3-like 2

## Calculated MW:

57 kDa

## Observed MW:

60-70 kDa

## Purification Method:

Antigen affinity purification

## Recommended Dilutions:

WB 1:500-1:1000

IF 1:20-1:200

## Applications

## Tested Applications:

IF/ICC, WB, ELISA

## Cited Applications:

WB, IF

## Species Specificity:

human, mouse, rat

## Cited Species:

human

## Positive Controls:

WB : HepG2 cells, mouse liver tissue, mouse testis tissue

IF : HepG2 cells,

## Background Information

Cyclic AMP-responsive element-binding protein 3-like protein 2 (CREB3L2), also named BBF2H7, is a transcriptional activator which is activated during endoplasmic reticulum (ER) stress late phase. It has 3 isoforms produced by alternative splicing. CREB3L2 exerts protective effect in neurons by regulation of unfolded protein response (UPR)-dependent gene transcriptions. N-terminal cytoplasmic domain of CREB3L2 is cleaved under ER stress and then translocates to the nucleus. Catalog# 14514-1-AP is a rabbit polyclonal antibody raised against N-terminal (1-247aa) of human CREB3L2.

## Notable Publications

Author	Pubmed ID	Journal	Application
Ryoichi Murase	36152228	Mol Biol Rep	WB
Yongli Zhang	34664264	Br J Pharmacol	WB
Kentaro Oh-Hashi	33803345	Int J Mol Sci	WB

## Storage

## Storage:

Store at -20°C. Stable for one year after shipment.

## Storage Buffer:

PBS with 0.02% sodium azide and 50% glycerol pH 7.3.

Aliquoting is unnecessary for -20°C storage

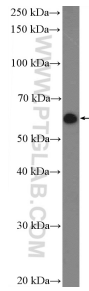
For technical support and original validation data for this product please contact:

T: 4006900926

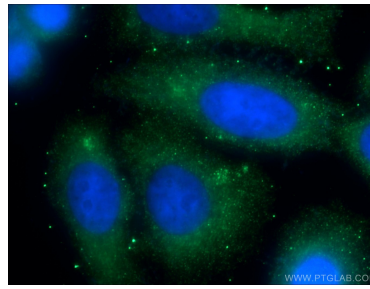
E: [Proteintech-CN@ptglab.com](mailto:Proteintech-CN@ptglab.com)W: [ptgcn.com](http://ptgcn.com)

This product is exclusively available under Proteintech Group brand and is not available to purchase from any other manufacturer.

## Selected Validation Data



HepG2 cells were subjected to SDS PAGE followed by western blot with 14514-1-AP (CREB3L2 Antibody) at dilution of 1:600 incubated at room temperature for 1.5 hours.



Immunofluorescent analysis of (-20°C Ethanol) fixed HepG2 cells using 14514-1-AP (CREB3L2 antibody) at dilution of 1:50 and Alexa Fluor 488-conjugated AffiniPure Goat Anti-Rabbit IgG(H+L).