

For Research Use Only

# UBC12 Polyclonal antibody

Catalog Number: 14520-1-AP

Featured Product

6 Publications



## Basic Information

**Catalog Number:**

14520-1-AP

**Size:**

900 µg/ml

**Source:**

Rabbit

**Isotype:**

IgG

**Immunogen Catalog Number:**

AG5984

**GenBank Accession Number:**

BC058924

**GeneID (NCBI):**

9040

**UNIPROT ID:**

P61081

**Full Name:**

ubiquitin-conjugating enzyme E2M  
(UBC12 homolog, yeast)

**Calculated MW:**

21 kDa

**Observed MW:**

21 kDa

**Purification Method:**

Antigen affinity purification

**Recommended Dilutions:**

WB 1:500-1:2000

IP 0.5-4.0 µg for 1.0-3.0 mg of total  
protein lysate

IHC 1:50-1:500

IF 1:20-1:200

## Applications

**Tested Applications:**

IF/ICC, IHC, IP, WB, ELISA

**Cited Applications:**

IF, IHC, WB

**Species Specificity:**

human, mouse, rat

**Cited Species:**

human

**Note-IHC: suggested antigen retrieval with  
TE buffer pH 9.0; (\*) Alternatively, antigen  
retrieval may be performed with citrate  
buffer pH 6.0**

**Positive Controls:**

**WB:** HEK-293T cells, L02 cells, SMMC-7721 cells, HEK-293 cells, Ramos cells

**IP:** L02 cells,

**IHC:** mouse ovary tissue,

**IF:** L02 cells,

## Background Information

### Notable Publications

Author	Pubmed ID	Journal	Application
Haibin Zhou	29074978	Nat Commun	WB,IF
Maria Fomicheva	33185187	Elife	WB
Wenjuan Zhou	35544948	Biochem Cell Biol	WB

## Storage

**Storage:**

Store at -20°C. Stable for one year after shipment.

**Storage Buffer:**

PBS with 0.02% sodium azide and 50% glycerol pH 7.3.

Aliquoting is unnecessary for -20°C storage

For technical support and original validation data for this product please contact:

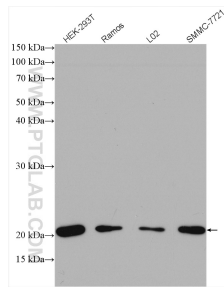
T: 4006900926

E: Proteintech-CN@ptglab.com

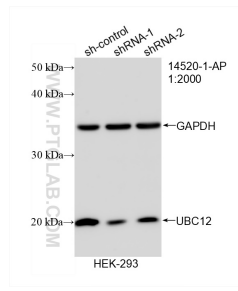
W: ptgcn.com

**This product is exclusively available under Proteintech Group brand and is not available to purchase from any other manufacturer.**

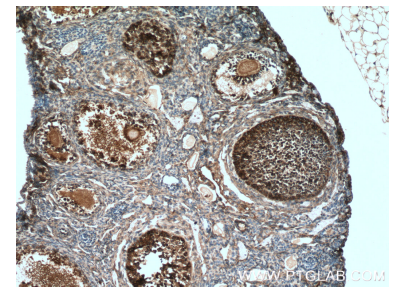
## Selected Validation Data



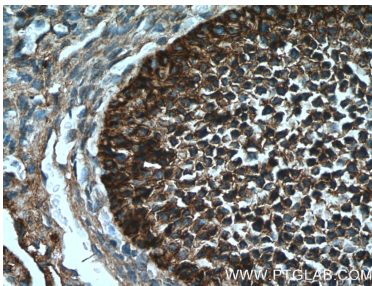
Various lysates were subjected to SDS PAGE followed by western blot with 14520-1-AP (UBC12 antibody) at dilution of 1:1000 incubated at room temperature for 1.5 hours.



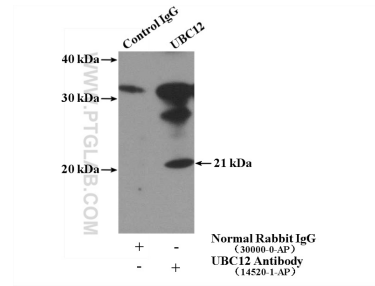
WB result of UBC12 antibody (14520-1-AP; 1:2000; incubated at room temperature for 1.5 hours) with sh-Control and sh-UBC12 transfected HEK-293 cells.



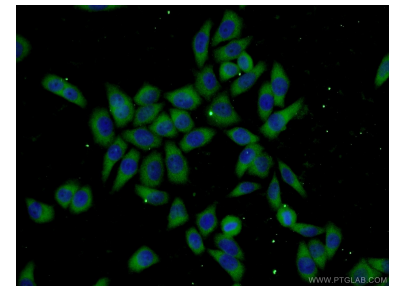
Immunohistochemical analysis of paraffin-embedded mouse ovary tissue slide using 14520-1-AP (UBC12 antibody) at dilution of 1:200 (under 10x lens. Heat mediated antigen retrieval with Tris-EDTA buffer (pH 9.0).



Immunohistochemical analysis of paraffin-embedded mouse ovary tissue slide using 14520-1-AP (UBC12 antibody) at dilution of 1:200 (under 40x lens. Heat mediated antigen retrieval with Tris-EDTA buffer (pH 9.0).



IP result of anti-UBC12 (IP:14520-1-AP, 4ug; Detection:14520-1-AP 1:600) with L02 cells lysate 1800ug.



Immunofluorescent analysis of L02 cells using 14520-1-AP (UBC12 antibody) at dilution of 1:50 and Alexa Fluor 488-conjugated AffiniPure Goat Anti-Rabbit IgG(H+L).