

For Research Use Only

CLIC1 Polyclonal antibody

Catalog Number: 14545-1-AP

Featured Product

8 Publications



Basic Information

Catalog Number:

14545-1-AP

Size:

550 µg/ml

Source:

Rabbit

Isotype:

IgG

Immunogen Catalog Number:

AG6049

GenBank Accession Number:

BC064527

GeneID (NCBI):

1192

UNIPROT ID:

O00299

Full Name:

chloride intracellular channel 1

Calculated MW:

27 kDa

Observed MW:

27-32 kDa

Purification Method:

Antigen affinity purification

Recommended Dilutions:

WB 1:500-1:1000

IP 0.5-4.0 µg for 1.0-3.0 mg of total protein lysate

IHC 1:20-1:200

IF 1:20-1:200

Applications

Tested Applications:

IF/ICC, IHC, IP, WB, ELISA

Cited Applications:

WB, IF, IHC

Species Specificity:

human, mouse, rat

Cited Species:

human, rat, mouse

Note-IHC: suggested antigen retrieval with TE buffer pH 9.0; (*) Alternatively, antigen retrieval may be performed with citrate buffer pH 6.0

Positive Controls:

WB : HL-60 cells, HeLa cells

IP : HeLa cells,

IHC : human small intestine tissue, human colon tissue, human pancreas tissue

IF : HepG2 cells, Hela cells

Background Information

Notable Publications

Author	Pubmed ID	Journal	Application
Jinwen Xia	36081926	Breast Cancer (Dove Med Press)	WB,IHC
Huiwu Geng	36252281	Transl Oncol	WB
Xuyong Wei	35722791	Technol Cancer Res Treat	WB,IHC

Storage

Storage:

Store at -20°C. Stable for one year after shipment.

Storage Buffer:

PBS with 0.02% sodium azide and 50% glycerol pH 7.3.

Aliquoting is unnecessary for -20°C storage

For technical support and original validation data for this product please contact:

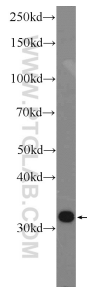
T: 4006900926

E: Proteintech-CN@ptglab.com

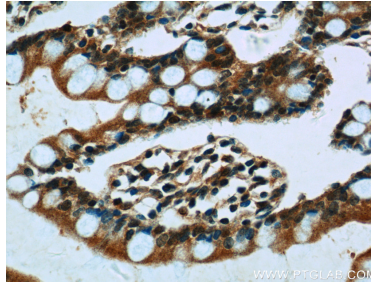
W: ptgcn.com

This product is exclusively available under Proteintech Group brand and is not available to purchase from any other manufacturer.

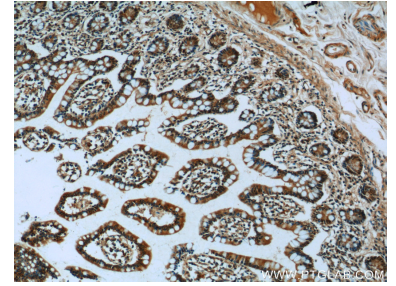
Selected Validation Data



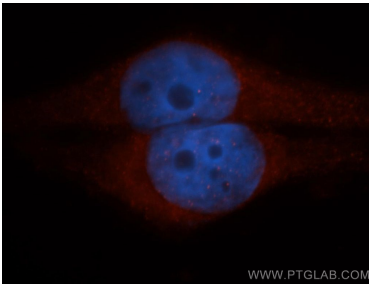
HL-60 cells were subjected to SDS PAGE followed by western blot with 14545-1-AP (CLIC1 Antibody) at dilution of 1:600 incubated at room temperature for 1.5 hours.



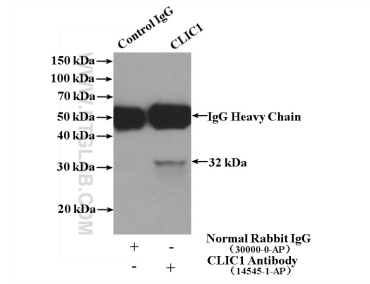
Immunohistochemical analysis of paraffin-embedded human small intestine tissue slide using 14545-1-AP (CLIC1 Antibody) at dilution of 1:50 (under 40x lens).



Immunohistochemical analysis of paraffin-embedded human small intestine tissue slide using 14545-1-AP (CLIC1 Antibody) at dilution of 1:50 (under 10x lens).



Immunofluorescent analysis of HepG2 cells, using CLIC1 antibody 14545-1-AP at 1:50 dilution and Rhodamine-labeled goat anti-rabbit IgG (red). Blue pseudocolor = DAPI (fluorescent DNA dye).



IP result of anti-CLIC1 (IP:14545-1-AP, 4ug; Detection:14545-1-AP 1:300) with HeLa cells lysate 1200ug.