

For Research Use Only

# APPBP1 Polyclonal antibody

Catalog Number: 14863-1-AP

Featured Product

1 Publications



## Basic Information

Catalog Number:

14863-1-AP

Size:

500 µg/ml

Source:

Rabbit

Isotype:

IgG

Immunogen Catalog Number:

AG6672

GenBank Accession Number:

BC000480

GeneID (NCBI):

8883

UNIPROT ID:

Q13564

Full Name:

NEDD8 activating enzyme E1 subunit

1

Calculated MW:

60 kDa

Observed MW:

60 kDa

Purification Method:

Antigen affinity purification

Recommended Dilutions:

WB 1:500-1:2400

IP 0.5-4.0 µg for 1.0-3.0 mg of total protein lysate

## Applications

Tested Applications:

IP, WB, ELISA

Cited Applications:

WB

Species Specificity:

human, mouse, rat

Positive Controls:

WB : human kidney tissue, human brain tissue, mouse brain tissue

IP : mouse kidney tissue,

## Background Information

### Notable Publications

Author	Pubmed ID	Journal	Application
Takumi Matsumoto	19706541	Proc Natl Acad Sci U S A	WB

## Storage

Storage:

Store at -20°C. Stable for one year after shipment.

Storage Buffer:

PBS with 0.02% sodium azide and 50% glycerol pH 7.3.

Aliquoting is unnecessary for -20°C storage

For technical support and original validation data for this product please contact:

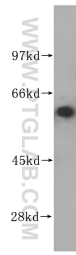
T: 4006900926

E: [Proteintech-CN@ptglab.com](mailto:Proteintech-CN@ptglab.com)

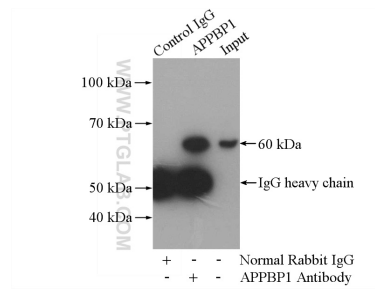
W: [ptgcn.com](http://ptgcn.com)

This product is exclusively available under Proteintech Group brand and is not available to purchase from any other manufacturer.

## Selected Validation Data



human kidney tissue were subjected to SDS PAGE followed by western blot with 14863-1-AP (APPBP1 antibody) at dilution of 1:400 incubated at room temperature for 1.5 hours.



IP result of anti-APPBP1 (IP:14863-1-AP, 4ug; Detection:14863-1-AP 1:500) with mouse kidney tissue lysate 4000ug.