

For Research Use Only

# APLP2 Polyclonal antibody

Catalog Number: 15041-1-AP **3 Publications**



## Basic Information

**Catalog Number:**

15041-1-AP

**Size:**

200 µg/ml

**Source:**

Rabbit

**Isotype:**

IgG

**Immunogen Catalog Number:**

AG6838

**GenBank Accession Number:**

BC000373

**GeneID (NCBI):**

334

**UNIPROT ID:**

Q06481

**Full Name:**

amyloid beta (A4) precursor-like protein 2

**Calculated MW:**

87 kDa

**Observed MW:**

120 kDa

**Purification Method:**

Antigen affinity purification

**Recommended Dilutions:**

WB 1:500-1:1000

IP 0.5-4.0 µg for 1.0-3.0 mg of total protein lysate

IHC 1:20-1:200

## Applications

**Tested Applications:**

IHC, IP, WB, ELISA

**Cited Applications:**

WB, PLA

**Species Specificity:**

human, mouse, rat

**Cited Species:**

human, mouse

**Note-IHC: suggested antigen retrieval with TE buffer pH 9.0; (\*) Alternatively, antigen retrieval may be performed with citrate buffer pH 6.0**

**Positive Controls:**

**WB:** HEK-293 cells, mouse brain tissue, rat brain tissue

**IP:** mouse brain tissue,

**IHC:** human brain tissue,

## Background Information

Amyloid precursor-like protein-2 (APLP2) is a member of the APP (amyloid precursor protein) family including APP, APLP1, and APLP2. APLP2 is ubiquitously expressed. It contains heparin-, copper- and zinc- binding domains at the N-terminus, BPTI/Kunitz inhibitor and E2 domains in the middle region, and transmembrane and intracellular domains at the C-terminus. APLP2 has been shown to regulate multiple cellular functions such as neurite outgrowth, axogenesis, corneal epithelial wound healing, cell adhesion, migration, and mitosis. The synergy of this protein and the APP is required to mediate neuromuscular transmission, spatial learning and synaptic plasticity. APLP2 has been implicated in the pathogenesis of Alzheimer's disease.

## Notable Publications

Author	Pubmed ID	Journal	Application
Jennifer J Schwarz	34526379	Life Sci Alliance	WB, PLA
Ke Liu	38449630	Heliyon	WB
Yu-Han H Hsu	37207277	iScience	

## Storage

**Storage:**

Store at -20°C. Stable for one year after shipment.

**Storage Buffer:**

PBS with 0.02% sodium azide and 50% glycerol pH 7.3.

Aliquoting is unnecessary for -20°C storage

For technical support and original validation data for this product please contact:

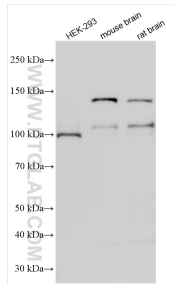
T: 4006900926

E: [Proteintech-CN@ptglab.com](mailto:Proteintech-CN@ptglab.com)

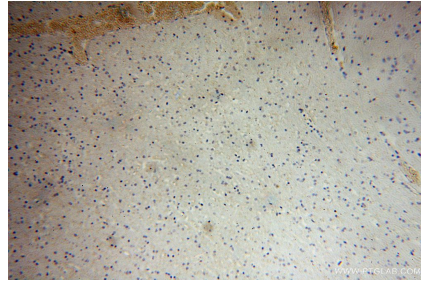
W: [ptgcn.com](http://ptgcn.com)

**This product is exclusively available under Proteintech Group brand and is not available to purchase from any other manufacturer.**

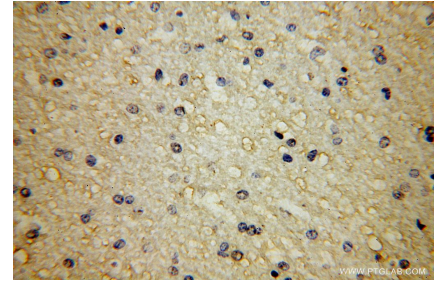
## Selected Validation Data



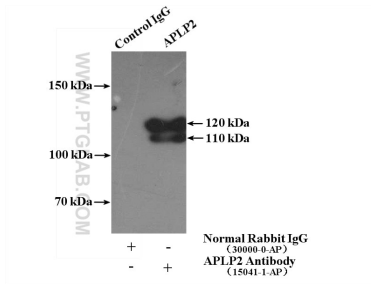
Various lysates were subjected to SDS PAGE followed by western blot with 15041-1-AP (APLP2 antibody) at dilution of 1:800 incubated at room temperature for 1.5 hours.



Immunohistochemical analysis of paraffin-embedded human brain using 15041-1-AP (APLP2 antibody) at dilution of 1:50 (under 10x lens).



Immunohistochemical analysis of paraffin-embedded human brain using 15041-1-AP (APLP2 antibody) at dilution of 1:50 (under 40x lens).



IP result of anti-APLP2 (IP:15041-1-AP, 4ug; Detection:15041-1-AP 1:300) with mouse brain tissue lysate 4000ug.