

For Research Use Only

Cadherin-16 Polyclonal antibody

Catalog Number: 15107-1-AP

Featured Product

9 Publications



Basic Information

Catalog Number:

15107-1-AP

Size:

400 µg/ml

Source:

Rabbit

Isotype:

IgG

Immunogen Catalog Number:

AG4343

GenBank Accession Number:

BC027912

GeneID (NCBI):

1014

UNIPROT ID:

O75309

Full Name:

cadherin 16, KSP-cadherin

Calculated MW:

90 kDa

Observed MW:

130 kDa

Purification Method:

Antigen affinity purification

Recommended Dilutions:

WB 1:2000-1:16000

IHC 1:50-1:500

Applications

Tested Applications:

WB, IHC, ELISA

Cited Applications:

WB, IF

Species Specificity:

human, mouse, rat

Cited Species:

human, mouse

Note-IHC: suggested antigen retrieval with TE buffer pH 9.0; (*) Alternatively, antigen retrieval may be performed with citrate buffer pH 6.0

Positive Controls:

WB : mouse kidney tissue, human kidney tissue, HEK-293 cells, rat kidney tissue

IHC : human kidney tissue, human renal cell carcinoma tissue

Background Information

Cadherin-16 (CDH16), also known as kidney-specific cadherin (Ksp-cadherin), is a tissue-specific member of the cadherin family of adhesion molecules (PMID: 7615566). It is a glycoprotein expressed by tubular epithelial cells in the kidney. Cadherin-16 expression is down-regulated in renal cell carcinoma, suggesting a role in tumor suppression (PMID: 15886705).

Notable Publications

Author	Pubmed ID	Journal	Application
Petrina Koumarianou	27780871	J Cell Sci	WB, IF
Huzi Xu	35641484	Cell Death Dis	IF
Xiaolin Yang	35350592	Oncol Lett	WB

Storage

Storage:

Store at -20°C. Stable for one year after shipment.

Storage Buffer:

PBS with 0.02% sodium azide and 50% glycerol pH 7.3.

Aliquoting is unnecessary for -20°C storage

For technical support and original validation data for this product please contact:

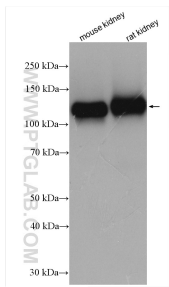
T: 4006900926

E: Proteintech-CN@ptglab.com

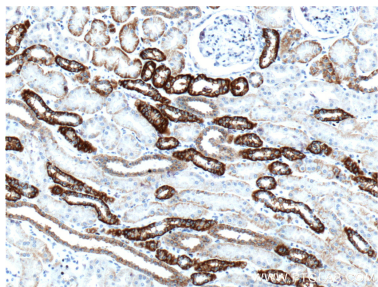
W: ptgcn.com

This product is exclusively available under Proteintech Group brand and is not available to purchase from any other manufacturer.

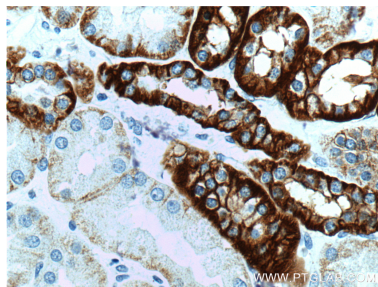
Selected Validation Data



Various lysates were subjected to SDS PAGE followed by western blot with 15107-1-AP (Cadherin-16 antibody) at dilution of 1:8000 incubated at room temperature for 1.5 hours.



Immunohistochemical analysis of paraffin-embedded human kidney tissue slide using 15107-1-AP (Cadherin-16 antibody at dilution of 1:200 (under 10x lens).



Immunohistochemical analysis of paraffin-embedded human kidney tissue slide using 15107-1-AP (Cadherin-16 antibody at dilution of 1:200 (under 40x lens).