

For Research Use Only

PGM1 Polyclonal antibody

Catalog Number: 15161-1-AP

Featured Product

15 Publications



Basic Information

Catalog Number:

15161-1-AP

Size:

450 µg/ml

Source:

Rabbit

Isotype:

IgG

Immunogen Catalog Number:

AG7269

GenBank Accession Number:

BC001756

GeneID (NCBI):

5236

UNIPROT ID:

P36871

Full Name:

phosphoglucomutase 1

Calculated MW:

61 kDa

Observed MW:

61 kDa

Purification Method:

Antigen affinity purification

Recommended Dilutions:

WB 1:2000-1:16000

IP 0.5-4.0 µg for 1.0-3.0 mg of total protein lysate

IHC 1:400-1:1600

IF 1:20-1:200

Applications

Tested Applications:

FC, IF/ICC, IHC, IP, WB, ELISA

Cited Applications:

WB, IF, IHC

Species Specificity:

human, mouse, rat

Cited Species:

human, rat, mouse

Positive Controls:

WB : HeLa cells, mouse skin tissue, HEK-293 cells, Jurkat cells, mouse heart tissue, rat heart tissue

IP : mouse skin tissue,

IHC : human hepatocirrhosis tissue, human testis tissue

IF : HepG2 cells,

Note-IHC: suggested antigen retrieval with TE buffer pH 9.0; (*) Alternatively, antigen retrieval may be performed with citrate buffer pH 6.0

Background Information

PGM1(Phosphoglucomutase-1) is also named as glucose phosphomutase 1 and belongs to the phosphohexose mutase family. It catalyzes the transfer of phosphate between the 1 and 6 positions of glucose. In most cell types, PGM1 isozymes predominate, representing about 90% of total PGM activity. One exception is red cells, where PGM2 is a major isozyme(PMID:8257433). Defects in PGM1 are the cause of glycogen storage disease type 14 (GSD14) (PMID:19625727). It has 2 isoforms produced by alternative splicing.

Notable Publications

Author	Pubmed ID	Journal	Application
Scott P Allen	31647549	Brain	WB
Zhewen Zheng	35614441	Cancer Cell Int	IHC
Xintian Chen	33794309	Cancer Lett	WB

Storage

Storage:

Store at -20°C. Stable for one year after shipment.

Storage Buffer:

PBS with 0.02% sodium azide and 50% glycerol pH 7.3.

Aliquoting is unnecessary for -20°C storage

For technical support and original validation data for this product please contact:

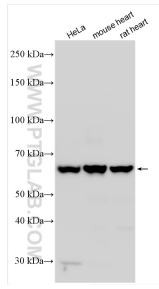
T: 4006900926

E: Proteintech-CN@ptglab.com

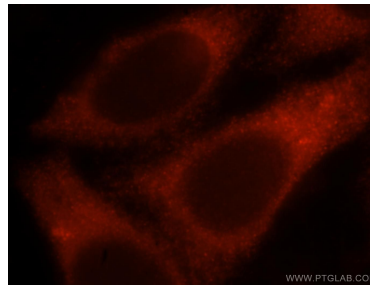
W: ptgcn.com

This product is exclusively available under Proteintech Group brand and is not available to purchase from any other manufacturer.

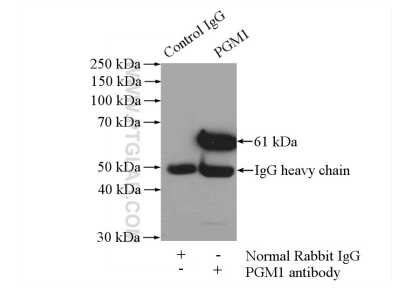
Selected Validation Data



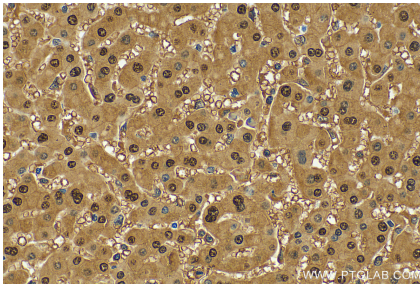
Various lysates were subjected to SDS PAGE followed by western blot with 15161-1-AP (PGM1 antibody) at dilution of 1:8000 incubated at room temperature for 1.5 hours.



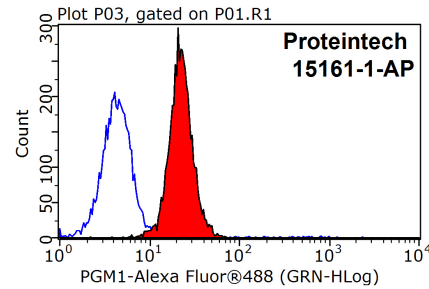
Immunofluorescent analysis of HepG2 cells, using PGM1 antibody 15161-1-AP at 1:25 dilution and Rhodamine-labeled goat anti-rabbit IgG (red).



IP result of anti-PGM1 (IP:15161-1-AP, 4ug; Detection:15161-1-AP 1:1000) with mouse skin tissue lysate 3200ug.



Immunohistochemical analysis of paraffin-embedded human hepatocirrhosis tissue slide using 15161-1-AP (PGM1 antibody) at dilution of 1:800 (under 40x lens). Heat mediated antigen retrieval with Tris-EDTA buffer (pH 9.0).



1X10⁶ HepG2 cells were stained with 0.2ug PGM1 antibody (15161-1-AP, red) and control antibody (blue). Fixed with 90% MeOH blocked with 3% BSA (30 min). Alexa Fluor 488-conjugated AffiniPure Goat Anti-Rabbit IgG(H+L) with dilution 1:1500.