

For Research Use Only

# RAB2 Polyclonal antibody

Catalog Number: 15420-1-AP

Featured Product

12 Publications



## Basic Information

**Catalog Number:**

15420-1-AP

**Size:**

400 µg/ml

**Source:**

Rabbit

**Isotype:**

IgG

**Immunogen Catalog Number:**

AG7708

**GenBank Accession Number:**

BC008929

**GeneID (NCBI):**

5862

**UNIPROT ID:**

P61019

**Full Name:**

RAB2A, member RAS oncogene family

**Calculated MW:**

24 kDa

**Observed MW:**

24 kDa

**Purification Method:**

Antigen affinity purification

**Recommended Dilutions:**

WB 1:1000-1:4000

IHC 1:20-1:200

## Applications

**Tested Applications:**

IHC, WB, ELISA

**Cited Applications:**

IF, WB

**Species Specificity:**

human, mouse, rat

**Cited Species:**

human, mouse

**Note-IHC: suggested antigen retrieval with TE buffer pH 9.0; (\*) Alternatively, antigen retrieval may be performed with citrate buffer pH 6.0**

**Positive Controls:**

WB : mouse brain tissue, HEK-293 cells, HeLa cells, mouse lung tissue, rat brain tissue

IHC : human brain tissue, human breast cancer tissue

## Background Information

The protein belongs to the Rab family, members of which are small molecular weight guanosine triphosphatases (GTPases) that contain highly conserved domains involved in GTP binding and hydrolysis. The Rabs are membrane-bound proteins, involved in vesicular fusion and trafficking. This protein is a resident of pre-Golgi intermediates, and is required for protein transport from the endoplasmic reticulum (ER) to the Golgi complex. This antibody can recognize both RAB2A and RAB2B.

## Notable Publications

Author	Pubmed ID	Journal	Application
Xiaolan Lian	29848341	J Hematol Oncol	WB
Erin P Smith	32234817	mBio	WB
Naoya Ueda	26896628	J Neurochem	WB

## Storage

**Storage:**

Store at -20°C. Stable for one year after shipment.

**Storage Buffer:**

PBS with 0.02% sodium azide and 50% glycerol pH 7.3.

Aliquoting is unnecessary for -20°C storage

For technical support and original validation data for this product please contact:

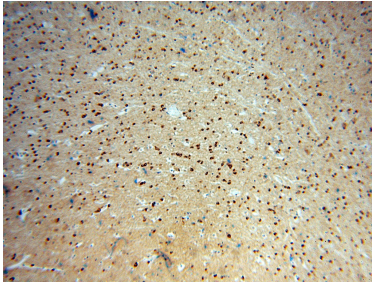
T: 4006900926

E: Proteintech-CN@ptglab.com

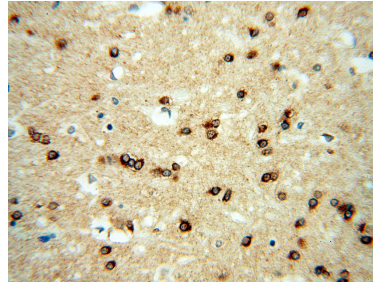
W: ptgcn.com

**This product is exclusively available under Proteintech Group brand and is not available to purchase from any other manufacturer.**

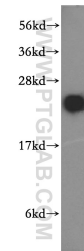
## Selected Validation Data



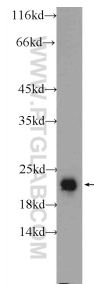
Immunohistochemical analysis of paraffin-embedded human brain using 15420-1-AP (RAB2 antibody) at dilution of 1:100 (under 10x lens).



Immunohistochemical analysis of paraffin-embedded human brain using 15420-1-AP (RAB2 antibody) at dilution of 1:100 (under 40x lens).



mouse brain tissue were subjected to SDS PAGE followed by western blot with 15420-1-AP (RAB2 antibody) at dilution of 1:1000 incubated at room temperature for 1.5 hours.



rat brain tissue were subjected to SDS PAGE followed by western blot with 15420-1-AP (RAB2 antibody) at dilution of 1:1000 incubated at room temperature for 1.5 hours.