

For Research Use Only

# CSTF1 Polyclonal antibody

Catalog Number: 15537-1-AP



## Basic Information

**Catalog Number:**

15537-1-AP

**Size:**

350 µg/ml

**Source:**

Rabbit

**Isotype:**

IgG

**Immunogen Catalog Number:**

AG7874

**GenBank Accession Number:**

BC007425

**GeneID (NCBI):**

1477

**UNIPROT ID:**

Q05048

**Full Name:**

cleavage stimulation factor, 3' pre-RNA, subunit 1, 50kDa

**Calculated MW:**

48 kDa

**Observed MW:**

50 kDa

**Purification Method:**

Antigen affinity purification

**Recommended Dilutions:**

WB 1:1000-1:4000

IP 0.5-4.0 µg for 1.0-3.0 mg of total protein lysate

IF 1:50-1:500

## Applications

**Tested Applications:**

IF/ICC, IP, WB, ELISA

**Species Specificity:**

human

**Positive Controls:**

WB : HeLa cells, HEK-293T cells, A549 cells

IP : HeLa cells,

IF : HeLa cells,

## Background Information

Cleavage stimulation factor (CstF), a heterotrimeric protein with subunits of 77, 64, and 50 kD (CstF-77, -64, and -50), is a polyadenylation factor that helps to specify the site of processing. CstF recognizes the G+U-rich element, a sequence located downstream of the cleavage site. CstF-50 unit interacts with the COOH-terminal domain of the RNAP II largest subunit (CTD).

## Storage

**Storage:**

Store at -20°C. Stable for one year after shipment.

**Storage Buffer:**

PBS with 0.02% sodium azide and 50% glycerol pH 7.3.

Aliquoting is unnecessary for -20°C storage

For technical support and original validation data for this product please contact:

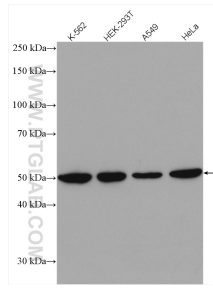
T: 4006900926

E: [Proteintech-CN@ptglab.com](mailto:Proteintech-CN@ptglab.com)

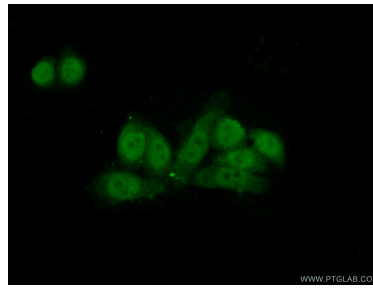
W: [ptgcn.com](http://ptgcn.com)

**This product is exclusively available under Proteintech Group brand and is not available to purchase from any other manufacturer.**

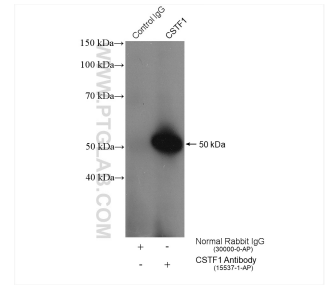
## Selected Validation Data



Various lysates were subjected to SDS PAGE followed by western blot with 15537-1-AP (CSTF1 antibody) at dilution of 1:2000 incubated at room temperature for 1.5 hours.



Immunofluorescent analysis of (10% Formaldehyde) fixed HeLa cells using 15537-1-AP (CSTF1 antibody) at dilution of 1:50 and Alexa Fluor 488-conjugated AffiniPure Goat Anti-Rabbit IgG(H+L).



IP result of anti-CSTF1 (IP:15537-1-AP, 4ug; Detection:15537-1-AP 1:500) with HeLa cells lysate 680 ug.