

EIF4G1 Polyclonal antibody

Catalog Number: 15704-1-AP

Featured Product

19 Publications

Basic Information

Catalog Number:

15704-1-AP

Size:

400 µg/ml

Source:

Rabbit

Isotype:

IgG

Immunogen Catalog Number:

AG8342

GenBank Accession Number:

BC007788

GeneID (NCBI):

1981

UNIPROT ID:

Q04637

Full Name:

eukaryotic translation initiation factor 4 gamma, 1

Calculated MW:

1600 aa, 176 kDa

Observed MW:

250 kDa

Purification Method:

Antigen affinity purification

Recommended Dilutions:

WB 1:2000-1:16000

IP 0.5-4.0 µg for 1.0-3.0 mg of total protein lysate

IHC 1:50-1:500

IF 1:10-1:100

Applications

Tested Applications:

IF/ICC, IHC, IP, WB, ELISA

Cited Applications:

CoIP, IF, IHC, WB

Species Specificity:

human

Cited Species:

human, mouse

Note-IHC: suggested antigen retrieval with TE buffer pH 9.0; (*) Alternatively, antigen retrieval may be performed with citrate buffer pH 6.0

Positive Controls:

WB: BxPC-3 cells, HeLa cells, HepG2 cells

IP: HeLa cells,

IHC: human breast cancer tissue,

IF: HeLa cells, HepG2 cells, Ethacrynic acid treated HepG2 cells

Background Information

Eukaryotic cellular messenger RNAs are posttranscriptionally modified by addition of an m(7)GTP moiety to the 5'-prime terminus, referred to as a cap. Recognition of the cap structure and unwinding of mRNA secondary structure during the initiation phase of protein synthesis is catalyzed by initiation factors of the eIF4 group. EIF4G1, a subunit of eIF4 gamma, forms various complexes with the other eIF4 polypeptides [PMID: 7601469]. Mutations in the EIF4G1 gene, encoding a component of the eIF4F translation initiation complex, were recently reported as a possible cause for the autosomal dominant form of Parkinson's disease [PMID: 22658323]. The calculated molecular weight of EIF4G1 is 175 kDa, but modified EIF4G1 is about 220-240 kDa. (PMID: 18426977)

Notable Publications

Author	Pubmed ID	Journal	Application
Linyu Sun	34555354	Mol Cell	CoIP
Seokwon Jo	33115825	Diabetes	WB, IF
Seokwon Jo	36387851	Front Endocrinol (Lausanne)	WB

Storage

Storage:

Store at -20°C. Stable for one year after shipment.

Storage Buffer:

PBS with 0.02% sodium azide and 50% glycerol pH 7.3.

Aliquoting is unnecessary for -20°C storage

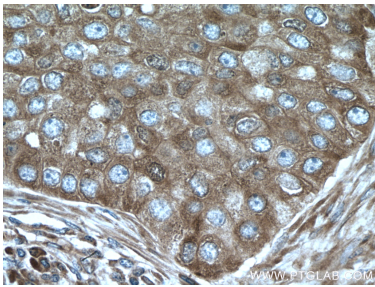
For technical support and original validation data for this product please contact:

T: 4006900926

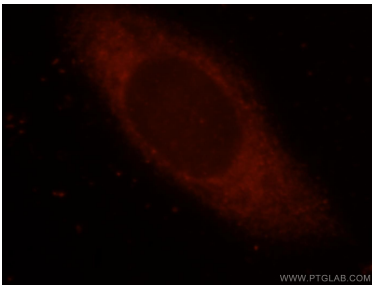
E: Proteintech-CN@ptglab.comW: ptgcn.com

This product is exclusively available under Proteintech Group brand and is not available to purchase from any other manufacturer.

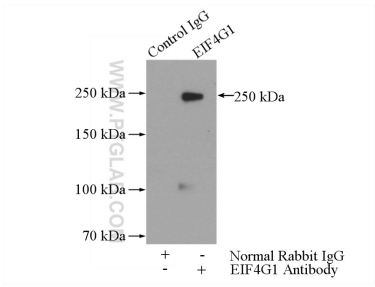
Selected Validation Data



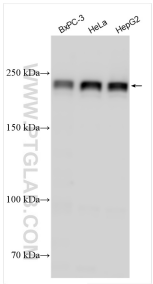
Immunohistochemical analysis of paraffin-embedded human breast cancer tissue slide using 15704-1-AP (EIF4G1 antibody) at dilution of 1:200 (under 40x lens. Heat mediated antigen retrieval with Tris-EDTA buffer (pH 9.0).



Immunofluorescent analysis of HeLa cells, using EIF4G1 antibody 15704-1-AP at 1:25 dilution and Rhodamine-labeled goat anti-rabbit IgG (red).



IP result of anti-EIF4G1 (IP:15704-1-AP, 5ug; Detection:15704-1-AP 1:500) with HeLa cells lysate 2000ug.



Various lysates were subjected to SDS PAGE followed by western blot with 15704-1-AP (EIF4G1 antibody) at dilution of 1:8000 incubated at room temperature for 1.5 hours.