

For Research Use Only

# LRCH3 Polyclonal antibody

Catalog Number: 15800-1-AP



## Basic Information

**Catalog Number:**

15800-1-AP

**Size:**

850 µg/ml

**Source:**

Rabbit

**Isotype:**

IgG

**Immunogen Catalog Number:**

AG8511

**GenBank Accession Number:**

BC007504

**GeneID (NCBI):**

84859

**UNIPROT ID:**

Q96118

**Full Name:**

leucine-rich repeats and calponin homology (CH) domain containing 3

**Calculated MW:**

86 kDa

**Observed MW:**

70 kDa

**Purification Method:**

Antigen affinity purification

**Recommended Dilutions:**

WB 1:500-1:2400

IP 0.5-4.0 µg for 1.0-3.0 mg of total protein lysate

IF 1:10-1:100

## Applications

**Tested Applications:**

IF/ICC, IP, WB, ELISA

**Species Specificity:**

human, mouse, rat

**Positive Controls:**

WB: human liver tissue, human heart tissue, human spleen tissue, Jurkat cells, mouse lung tissue

IP: mouse liver tissue,

IF: A431 cells,

## Background Information

### Storage

**Storage:**

Store at -20°C. Stable for one year after shipment.

**Storage Buffer:**

PBS with 0.02% sodium azide and 50% glycerol pH 7.3.

Aliquoting is unnecessary for -20°C storage

For technical support and original validation data for this product please contact:

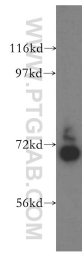
T: 4006900926

E: [Proteintech-CN@ptglab.com](mailto:Proteintech-CN@ptglab.com)

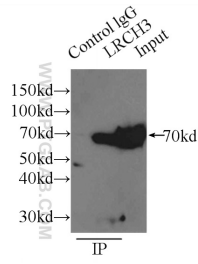
W: [ptgcn.com](http://ptgcn.com)

This product is exclusively available under Proteintech Group brand and is not available to purchase from any other manufacturer.

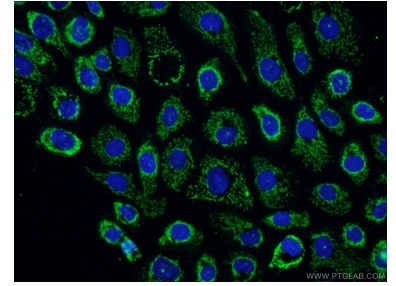
## Selected Validation Data



human liver tissue were subjected to SDS PAGE followed by western blot with 15800-1-AP (LRCH3 antibody) at dilution of 1:500 incubated at room temperature for 1.5 hours.



IP result of anti-LRCH3 (IP:15800-1-AP, 3ug; Detection:15800-1-AP 1:1000) with mouse liver tissue lysate 12500ug.



Immunofluorescent analysis of A431 cells using 15800-1-AP (LRCH3 antibody) at dilution of 1:25 and Alexa Fluor 488-conjugated AffiniPure Goat Anti-Rabbit IgG(H+L).