

RAB11A/B Polyclonal antibody

Catalog Number: 15903-1-AP

Featured Product

30 Publications

Basic Information

Catalog Number:

15903-1-AP

Size:

450 µg/ml

Source:

Rabbit

Isotype:

IgG

Immunogen Catalog Number:

AG8742

GenBank Accession Number:

BC013348

GeneID (NCBI):

8766

UNIPROT ID:

P62491

Full Name:

RAB11A, member RAS oncogene family

Calculated MW:

216 aa, 24 kDa

Observed MW:

24 kDa

Purification Method:

Antigen affinity purification

Recommended Dilutions:

WB 1:500-1:2000

IP 0.5-4.0 µg for 1.0-3.0 mg of total protein lysate

IHC 1:50-1:500

IF 1:200-1:800

Applications

Tested Applications:

IF/ICC, IHC, IP, WB, ELISA

Cited Applications:

WB, IF, IHC, CoIP

Species Specificity:

human, mouse

Cited Species:

human, mouse, monkey, pig, canine

Note-IHC: suggested antigen retrieval with TE buffer pH 9.0; (*) Alternatively, antigen retrieval may be performed with citrate buffer pH 6.0

Positive Controls:

WB: mouse spleen tissue, Jurkat cells, MCF-7 cells, SH-SY5Y cells, HeLa cells

IP: mouse spleen tissue,

IHC: human heart tissue,

IF: A549 cells, U2OS cells

Background Information

RAB11 has two isoform genes RAB11A(YL8) and RAB11B(YPT3), and belongs to the small GTPase superfamily and Rab family. It regulates endocytic recycling. RAB11 may exert its functions by interacting with multiple effector proteins in different complexes. It acts as a major regulator of membrane delivery during cytokinesis. RAB11 regulates the recycling of FCGR2 (receptor of Fc region of monomeric Ig G) to basolateral membranes. This antibody can recognize both RAB11A(24 kDa) and RAB11B(24 kDa).

Notable Publications

Author	Pubmed ID	Journal	Application
Jiang Du	33178272	J Oncol	WB, IHC
Yu Lian	30326930	J Exp Clin Cancer Res	WB
Wai Wa Ray Chan	33047393	FASEB J	WB, IF

Storage

Storage:

Store at -20°C. Stable for one year after shipment.

Storage Buffer:

PBS with 0.02% sodium azide and 50% glycerol pH 7.3.

Aliquoting is unnecessary for -20°C storage

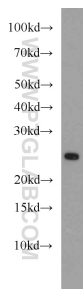
For technical support and original validation data for this product please contact:

T: 4006900926

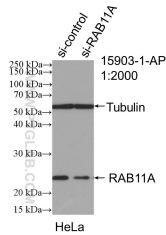
E: Proteintech-CN@ptglab.comW: ptgcn.com

This product is exclusively available under Proteintech Group brand and is not available to purchase from any other manufacturer.

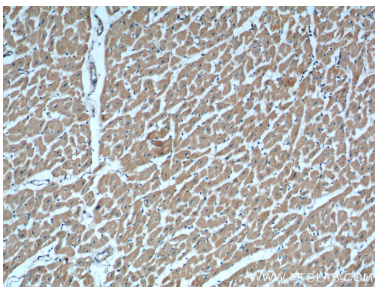
Selected Validation Data



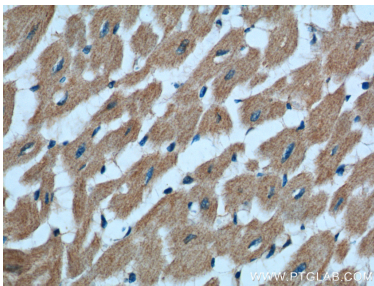
mouse spleen tissue were subjected to SDS PAGE followed by western blot with 15903-1-AP (RAB11A/B antibody) at dilution of 1:1000 incubated at room temperature for 1.5 hours.



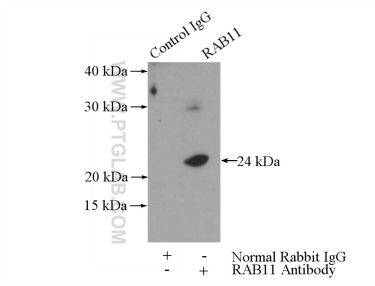
WB result of RAB11A/B antibody (15903-1-AP; 1:2000; incubated at room temperature for 1.5 hours) with sh-Control and sh-RAB11A/B transfected HeLa cells.



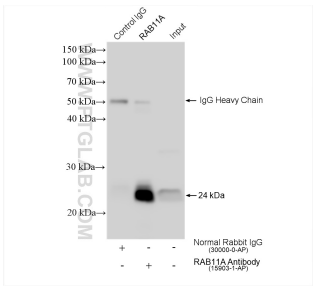
Immunohistochemical analysis of paraffin-embedded human heart tissue slide using 15903-1-AP (RAB11A/B antibody at dilution of 1:200 (under 10x lens).



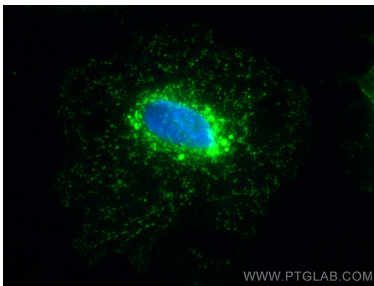
Immunohistochemical analysis of paraffin-embedded human heart tissue slide using 15903-1-AP (RAB11A/B antibody at dilution of 1:200 (under 40x lens).



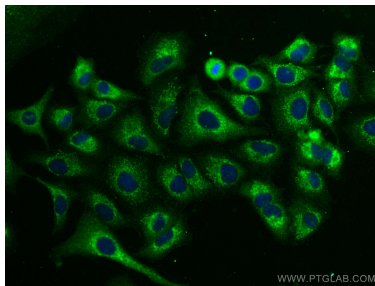
IP result of anti-RAB11A/B (IP:15903-1-AP, 3ug; Detection:15903-1-AP 1:500) with mouse spleen tissue lysate 4000ug.



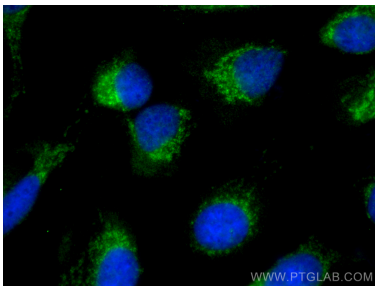
IP result of anti-RAB11A/B (IP:15903-1-AP, 4ug; Detection:15903-1-AP 1:1000) with mouse spleen tissue lysate 1920 ug.



Immunofluorescent analysis of (-20°C Methanol) fixed A549 cells using RAB11A/B antibody (15903-1-AP) at dilution of 1:400 and CoraLite®488-Conjugated AffiniPure Goat Anti-Rabbit IgG(H+L).



Immunofluorescent analysis of (-20°C Methanol) fixed A549 cells using RAB11A/B antibody (15903-1-AP) at dilution of 1:400 and CoraLite®488-Conjugated AffiniPure Goat Anti-Rabbit IgG(H+L).



Immunofluorescent analysis of (-20°C Methanol) fixed U2OS cells using RAB11A/B antibody (15903-1-AP) at dilution of 1:400 and CoraLite®488-Conjugated AffiniPure Goat Anti-Rabbit IgG(H+L).