

For Research Use Only

# Glucagon Polyclonal antibody

Catalog Number: 15954-1-AP **33 Publications**



## Basic Information

<b>Catalog Number:</b> 15954-1-AP	<b>GenBank Accession Number:</b> BC005278	<b>Purification Method:</b> Antigen affinity purification
<b>Size:</b> 650 µg/ml	<b>GeneID (NCBI):</b> 2641	<b>Recommended Dilutions:</b> IHC 1:12800-1:51200 IF 1:200-1:800
<b>Source:</b> Rabbit	<b>UNIPROT ID:</b> P01275	
<b>Isotype:</b> IgG	<b>Full Name:</b> glucagon	
<b>Immunogen Catalog Number:</b> AG8677	<b>Calculated MW:</b> 180 aa, 21 kDa	

## Applications

**Tested Applications:**  
IF/ICC, IF-P, IHC, ELISA

**Cited Applications:**  
IF, IHC

**Species Specificity:**  
human, mouse, rat

**Cited Species:**  
human, rat, mouse

**Note-IHC: suggested antigen retrieval with TE buffer pH 9.0; (\*) Alternatively, antigen retrieval may be performed with citrate buffer pH 6.0**

**Positive Controls:**

**IHC:** human pancreas tissue, human small intestine tissue, mouse small intestine tissue, rat pancreas tissue, human colon tissue

**IF:** mouse pancreas tissue, human pancreas tissue, rat pancreas tissue

## Background Information

Glucagon is a 29-amino acid peptide hormone secreted from the pancreatic alpha cells with a powerful stimulatory effect on hepatic glucose production acting to increase plasma glucose levels. Glucagon is best known as the counter-regulatory hormone to insulin, and normal glucose homeostasis depends largely on the balanced secretion of insulin and glucagon from the pancreatic beta and alpha cells, respectively. The regulation of glucose metabolism by glucagon is mediated by its direct action on the peripheral tissues such as the liver and also by the brain. Glucagon is also released postprandially in a transient manner, which was shown to be involved in inhibition of food intake via reduction of meal size.

## Notable Publications

Author	Pubmed ID	Journal	Application
Xiaoyi Zhang	34556631	Cell Death Dis	IF
Nicholas C Vierra	28928238	Sci Signal	
Simeng Bao	34699923	Food Chem Toxicol	IF

## Storage

**Storage:**

Store at -20°C. Stable for one year after shipment.

**Storage Buffer:**

PBS with 0.02% sodium azide and 50% glycerol pH 7.3.

Aliquoting is unnecessary for -20°C storage

For technical support and original validation data for this product please contact:

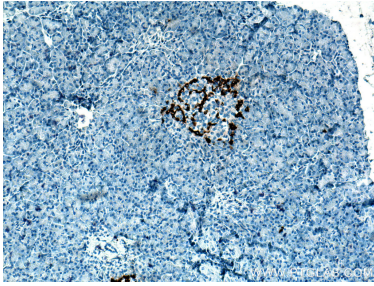
T: 4006900926

E: Proteintech-CN@ptglab.com

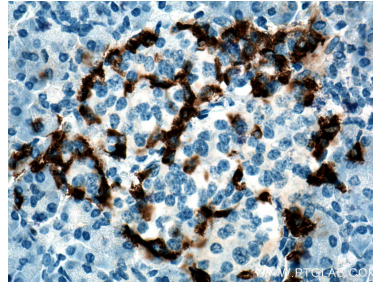
W: ptgcn.com

**This product is exclusively available under Proteintech Group brand and is not available to purchase from any other manufacturer.**

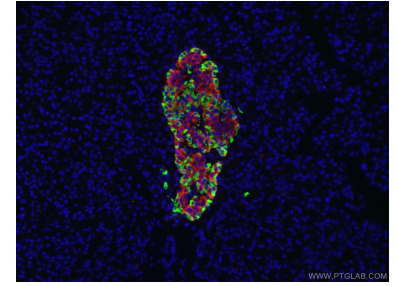
## Selected Validation Data



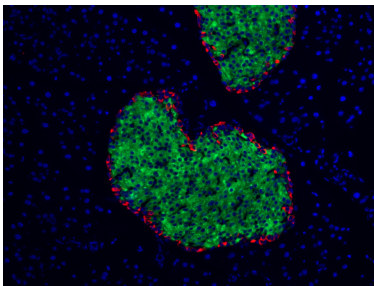
Immunohistochemical analysis of paraffin-embedded human pancreas tissue slide using 15954-1-AP (Glucagon antibody) at dilution of 1:25600 (under 10x lens). Heat mediated antigen retrieval with Tris-EDTA buffer (pH 9.0).



Immunohistochemical analysis of paraffin-embedded human pancreas tissue slide using 15954-1-AP (Glucagon antibody) at dilution of 1:25600 (under 40x lens). Heat mediated antigen retrieval with Tris-EDTA buffer (pH 9.0).



Immunofluorescent analysis of (4% PFA) fixed human pancreas tissue using 15954-1-AP (Glucagon antibody) at dilution of 1:50 and CoraLite488-Conjugated AffiniPure Goat Anti-Rabbit IgG(H+L). The B cells of the islets of Langerhans was labelled in red with 66198-1-Ig (INS antibody).



Immunofluorescent analysis of (4% PFA) fixed mouse pancreas tissue using 15954-1-AP (Glucagon antibody), at dilution of 1:400 and CoraLite@594-Conjugated AffiniPure Goat Anti-Rabbit IgG(H+L). The B cells of the islets of Langerhans was labelled in green with CL488-66198.