

For Research Use Only

S100A1 Polyclonal antibody

Catalog Number: 16027-1-AP

Featured Product

6 Publications



Basic Information

Catalog Number:

16027-1-AP

Size:

600 µg/ml

Source:

Rabbit

Isotype:

IgG

Immunogen Catalog Number:

AG8871

GenBank Accession Number:

BC014392

GeneID (NCBI):

6271

UNIPROT ID:

P23297

Full Name:

S100 calcium binding protein A1

Calculated MW:

94 aa, 11 kDa

Observed MW:

10 kDa

Purification Method:

Antigen affinity purification

Recommended Dilutions:

WB 1:500-1:1000

IHC 1:50-1:500

IF 1:50-1:500

Applications

Tested Applications:

IF/ICC, IHC, WB, ELISA

Cited Applications:

WB, IF, IHC

Species Specificity:

human, mouse, rat

Cited Species:

human, rat

Note-IHC: suggested antigen retrieval with TE buffer pH 9.0; (*) Alternatively, antigen retrieval may be performed with citrate buffer pH 6.0

Positive Controls:

WB : human heart tissue,

IHC : human malignant melanoma tissue, human kidney tissue, human ovary tumor tissue, human appendicitis tissue, human tonsillitis tissue, rat brain tissue, human thyroid cancer tissue

IF : human ovary cancer tissue,

Background Information

Notable Publications

Author	Pubmed ID	Journal	Application
Mosi K Bennett	24842913	Circ Heart Fail	WB
Wenkai Yang	34366855	Front Pharmacol	WB
Ye Bai	36524376	Mol Med Rep	WB,IF

Storage

Storage:

Store at -20°C. Stable for one year after shipment.

Storage Buffer:

PBS with 0.02% sodium azide and 50% glycerol pH 7.3.

Aliquoting is unnecessary for -20°C storage

For technical support and original validation data for this product please contact:

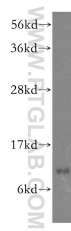
T: 4006900926

E: Proteintech-CN@ptglab.com

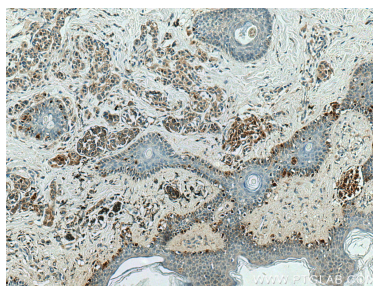
W: ptgcn.com

This product is exclusively available under Proteintech Group brand and is not available to purchase from any other manufacturer.

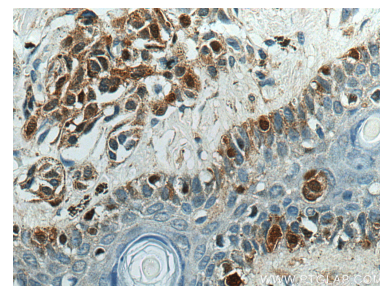
Selected Validation Data



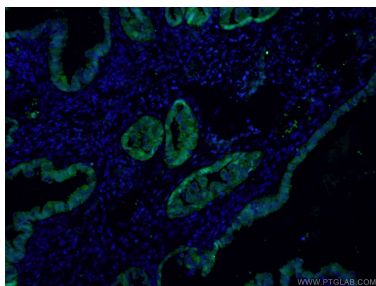
human heart tissue were subjected to SDS PAGE followed by western blot with 16027-1-AP (S100A1 antibody) at dilution of 1:500 incubated at room temperature for 1.5 hours.



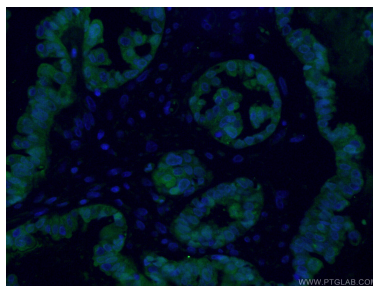
Immunohistochemical analysis of paraffin-embedded human malignant melanoma tissue slide using 16027-1-AP (S100A1 antibody) at dilution of 1:200 (under 10x lens)..



Immunohistochemical analysis of paraffin-embedded human malignant melanoma tissue slide using 16027-1-AP (S100A1 antibody) at dilution of 1:200 (under 40x lens)..



Immunofluorescent analysis of (4% PFA) fixed human ovary cancer cells using 16027-1-AP (S100A1 antibody) at dilution of 1:50 and Alexa Fluor 488-Conjugated AffiniPure Goat Anti-Rabbit IgG(H+L).



Immunofluorescent analysis of (4% PFA) fixed human ovary cancer cells using 16027-1-AP (S100A1 antibody) at dilution of 1:50 and Alexa Fluor 488-Conjugated AffiniPure Goat Anti-Rabbit IgG(H+L).