

For Research Use Only

CAB39L Polyclonal antibody

Catalog Number: 16137-1-AP **1 Publications**



Basic Information

Catalog Number: 16137-1-AP	GenBank Accession Number: BC010993	Purification Method: Antigen affinity purification
Size: 550 µg/ml	GeneID (NCBI): 81617	Recommended Dilutions: WB 1:500-1:2000 IHC 1:50-1:500 IF 1:10-1:100
Source: Rabbit	UNIPROT ID: Q9H9S4	
Isotype: IgG	Full Name: calcium binding protein 39-like	
Immunogen Catalog Number: AG9181	Calculated MW: 337 aa, 39 kDa	
	Observed MW: 39 kDa	

Applications

Tested Applications: IF/ICC, IHC, WB, ELISA	Positive Controls: WB : K-562 cells, HEK-293 cells, human spleen tissue IHC : human lymphoma tissue, IF : HepG2 cells,
Cited Applications: IHC	
Species Specificity: human	
Cited Species: human	
Note-IHC: suggested antigen retrieval with TE buffer pH 9.0; (*) Alternatively, antigen retrieval may be performed with citrate buffer pH 6.0	

Background Information

Notable Publications

Author	Pubmed ID	Journal	Application
Yunfei Wu	37109674	Medicina (Kaunas)	IHC

Storage

Storage:
Store at -20°C. Stable for one year after shipment.
Storage Buffer:
PBS with 0.02% sodium azide and 50% glycerol pH 7.3.
Aliquoting is unnecessary for -20°C storage

For technical support and original validation data for this product please contact:

T: 4006900926

E: Proteintech-CN@ptglab.com

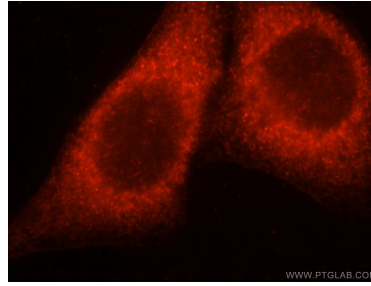
W: ptgcn.com

This product is exclusively available under Proteintech Group brand and is not available to purchase from any other manufacturer.

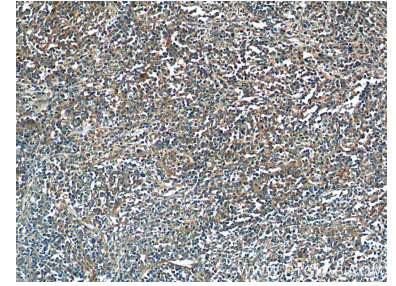
Selected Validation Data



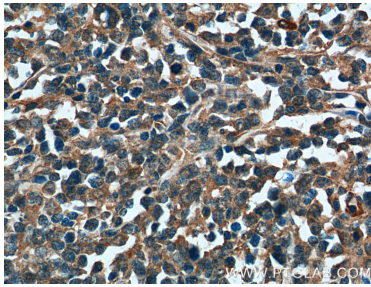
K-562 cells were subjected to SDS PAGE followed by western blot with 16137-1-AP (CAB39L antibody) at dilution of 1:400 incubated at room temperature for 1.5 hours.



Immunofluorescent analysis of HepG2 cells, using CAB39L antibody 16137-1-AP at 1:25 dilution and Rhodamine-labeled goat anti-rabbit IgG (red).



Immunohistochemical analysis of paraffin-embedded human lymphoma tissue slide using 16137-1-AP (CAB39L Antibody) at dilution of 1:200 (under 10x lens).



Immunohistochemical analysis of paraffin-embedded human lymphoma tissue slide using 16137-1-AP (CAB39L Antibody) at dilution of 1:200 (under 40x lens).