

For Research Use Only

# SLC30A8/ZNT8-Specific Polyclonal antibody

Catalog Number: 16169-1-AP

Featured Product

9 Publications



## Basic Information

Catalog Number:

16169-1-AP

Concentration:

350 ug/ml

Source:

Rabbit

Isotype:

IgG

GenBank Accession Number:

NM\_173851

GeneID (NCBI):

169026

UNIPROT ID:

Q8IWU4

Full Name:

solute carrier family 30 (zinc transporter), member 8

Calculated MW:

41 kDa

Observed MW:

45-50 kDa

Purification Method:

Antigen affinity purification

Recommended Dilutions:

WB 1:500-1:1000

IHC 1:250-1:1000

IF-P 1:50-1:500

IF/ICC 1:50-1:500

## Applications

Tested Applications:

WB, IHC, IF/ICC, IF-P, ELISA

Cited Applications:

WB, IHC, IF

Species Specificity:

human, mouse

Cited Species:

human, mouse, rat, yellow catfish

**Note-IHC: suggested antigen retrieval with TE buffer pH 9.0; (\*) Alternatively, antigen retrieval may be performed with citrate buffer pH 6.0**

Positive Controls:

WB : mouse pancreas tissue,

IHC : human pancreas tissue, human pancreas cancer tissue, human liver cancer tissue

IF-P : human pancreas tissue,

IF/ICC : HepG2 cells,

## Background Information

SLC30A8 (also named as ZNT8) encodes the secretory granule zinc transporter, permitting cellular efflux of zinc. SLC30A8 was recently defined as a autoantigen candidates of type 2 diabetes, although the molecular mechanism through which this phenotype is manifest is incompletely understood.

## Notable Publications

| Author             | Pubmed ID | Journal     | Application |
|--------------------|-----------|-------------|-------------|
| Chengfeng Merriman | 30181214  | J Biol Chem |             |
| Chengfeng Merriman | 29184000  | J Biol Chem | WB          |
| Chengfeng Merriman | 27875315  | J Biol Chem | WB          |

## Storage

Storage:

Store at -20°C. Stable for one year after shipment.

Storage Buffer:

PBS with 0.02% sodium azide and 50% glycerol, pH7.3

Aliquoting is unnecessary for -20°C storage

For technical support and original validation data for this product please contact:

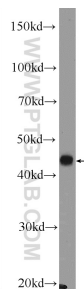
T: 4006900926

E: [Proteintech-CN@ptglab.com](mailto:Proteintech-CN@ptglab.com)

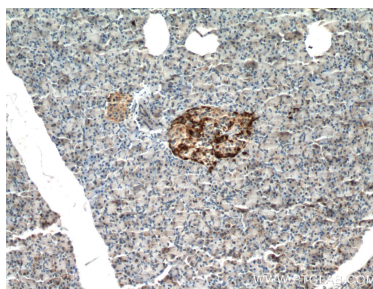
W: [ptgcn.com](http://ptgcn.com)

This product is exclusively available under Proteintech Group brand and is not available to purchase from any other manufacturer.

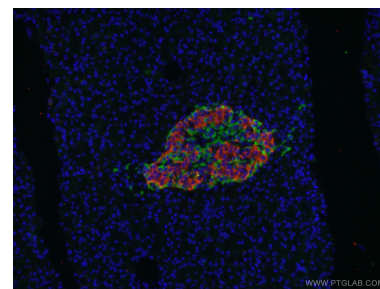
## Selected Validation Data



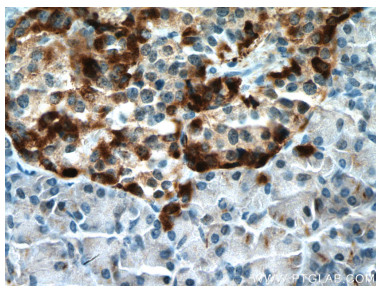
mouse pancreas tissue were subjected to SDS PAGE followed by western blot with 16169-1-AP (SLC30A8/ZNT8-Specific antibody at dilution of 1:600 incubated at room temperature for 1.5 hours.



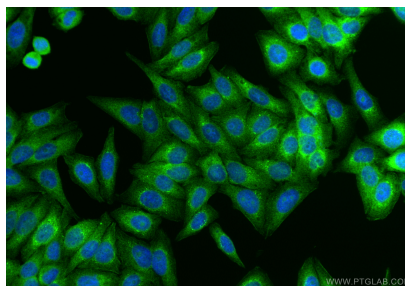
Immunohistochemical analysis of paraffin-embedded human pancreas tissue slide using 16169-1-AP (SLC30A8/ZNT8-Specific antibody) at dilution of 1:500 (under 10x lens. Heat mediated antigen retrieval with Tris-EDTA buffer (pH 9.0).



Immunofluorescent analysis of (4% PFA) fixed human pancreas tissue using 16169-1-AP (SLC30A8/ZNT8-Specific antibody) at dilution of 1:50 and CoraLite488-Conjugated AffiniPure Goat Anti-Rabbit IgG(H+L). Red: 66198-1-Ig (Insulin antibody).



Immunohistochemical analysis of paraffin-embedded human pancreas tissue slide using 16169-1-AP (SLC30A8/ZNT8-Specific antibody) at dilution of 1:500 (under 40x lens. Heat mediated antigen retrieval with Tris-EDTA buffer (pH 9.0).



Immunofluorescent analysis of (4% PFA) fixed HepG2 cells using SLC30A8/ZNT8-Specific antibody (16169-1-AP) at dilution of 1:200 and CoraLite® 488-Conjugated Goat Anti-Rabbit IgG(H+L) (SA00013-2).