

For Research Use Only

# PLEKHM1 Polyclonal antibody

Catalog Number: 16202-1-AP **2 Publications**



## Basic Information

Catalog Number:

16202-1-AP

Size:

450 µg/ml

Source:

Rabbit

Isotype:

IgG

Immunogen Catalog Number:

AG9145

GenBank Accession Number:

BC064361

GeneID (NCBI):

9842

UNIPROT ID:

Q9Y4G2

Full Name:

pleckstrin homology domain containing, family M (with RUN domain) member 1

Calculated MW:

117 kDa

Observed MW:

117 kDa

Purification Method:

Antigen affinity purification

Recommended Dilutions:

WB 1:200-1:1000

IHC 1:50-1:500

## Applications

Tested Applications:

IHC, WB, ELISA

Cited Applications:

WB

Species Specificity:

human, mouse, rat

Cited Species:

human, mouse

**Note-IHC: suggested antigen retrieval with TE buffer pH 9.0; (\*) Alternatively, antigen retrieval may be performed with citrate buffer pH 6.0**

Positive Controls:

WB: ROS1728 cells, mouse liver tissue

IHC: human kidney tissue, human liver cancer tissue, human breast cancer tissue

## Background Information

### Notable Publications

Author	Pubmed ID	Journal	Application
Hongkun Lin	35277017	Nutrients	WB
Wang Zheng	35913916	Autophagy	WB

## Storage

Storage:

Store at -20°C. Stable for one year after shipment.

Storage Buffer:

PBS with 0.02% sodium azide and 50% glycerol pH 7.3.

Aliquoting is unnecessary for -20°C storage

For technical support and original validation data for this product please contact:

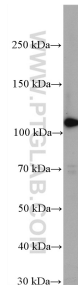
T: 4006900926

E: Proteintech-CN@ptglab.com

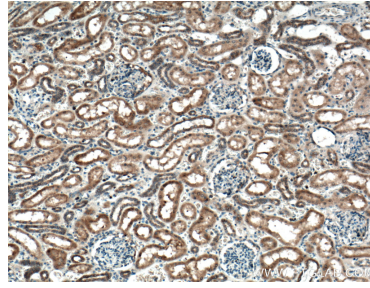
W: ptgcn.com

**This product is exclusively available under Proteintech Group brand and is not available to purchase from any other manufacturer.**

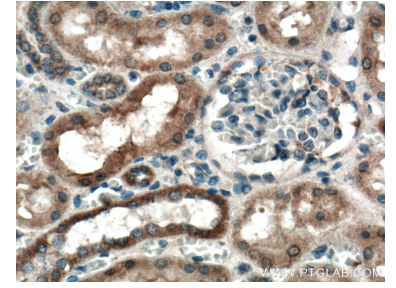
## Selected Validation Data



ROS1728 cells were subjected to SDS PAGE followed by western blot with 16202-1-AP (PLEKHM1 antibody) at dilution of 1:300 incubated at room temperature for 1.5 hours.



Immunohistochemical analysis of paraffin-embedded human kidney tissue slide using 16202-1-AP (PLEKHM1 antibody) at dilution of 1:200 (under 10x lens. Heat mediated antigen retrieval with Tris-EDTA buffer (pH 9.0).



Immunohistochemical analysis of paraffin-embedded human kidney tissue slide using 16202-1-AP (PLEKHM1 antibody) at dilution of 1:200 (under 40x lens. Heat mediated antigen retrieval with Tris-EDTA buffer (pH 9.0).