

## Caveolin-1 Polyclonal antibody

Catalog Number: 16447-1-AP

Featured Product

81 Publications

## Basic Information

## Catalog Number:

16447-1-AP

## Size:

550 µg/ml

## Source:

Rabbit

## Isotype:

IgG

## Immunogen Catalog Number:

AG8049

## GenBank Accession Number:

BC006432

## GeneID (NCBI):

857

## UNIPROT ID:

Q03135

## Full Name:

caveolin 1, caveolae protein, 22kDa

## Calculated MW:

22 kDa

## Observed MW:

20-25 kDa

## Purification Method:

Antigen affinity purification

## Recommended Dilutions:

WB 1:500-1:2000

IP 0.5-4.0 µg for 1.0-3.0 mg of total protein lysate

IHC 1:50-1:500

## Applications

## Tested Applications:

IHC, IP, WB, ELISA

## Cited Applications:

IF, IHC, IP, WB

## Species Specificity:

human, mouse, rat

## Cited Species:

human, rat, mouse, zebrafish, canine, bovine

**Note-IHC: suggested antigen retrieval with TE buffer pH 9.0; (\*) Alternatively, antigen retrieval may be performed with citrate buffer pH 6.0**

## Positive Controls:

WB : A549 cells, HeLa cells, NIH/3T3 cells

IP : A549 cells,

IHC : human breast cancer tissue, mouse brain tissue, human liver tissue, human lung cancer tissue, human lung tissue, human heart tissue

## Background Information

Caveolin-1 (CAV1), a multifunctional protein, is the main constituent molecule of caveolae and represents a scaffolding molecule for several signaling molecules including epidermal growth factor receptor (PMID: 19641024). Several studies have implicated that a reduced expression of CAV1 was found in cancers including head and neck carcinoma (PMID: 19002186). However, other studies recognize CAV1 as a tumor promoter because CAV1 is overexpressed in various kinds of cancers, especially in oral cancer (PMID: 20558341). Recent study also show that CAV1 is involved in astric Cancer (PMID: 25339030). MW of Caveolin-1 is from 20-25 kDa due to phosphorylation (PMID: 10198051).

## Notable Publications

Author	Pubmed ID	Journal	Application
Li Wu	36184060	Vascul Pharmacol	WB, IF
Dali Zhao	34555268	FEBS Open Bio	WB
Denghui Wei	32958903	Cell Res	WB

## Storage

## Storage:

Store at -20°C. Stable for one year after shipment.

## Storage Buffer:

PBS with 0.02% sodium azide and 50% glycerol pH 7.3.

Aliquoting is unnecessary for -20°C storage

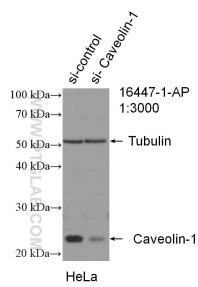
For technical support and original validation data for this product please contact:

T: 4006900926

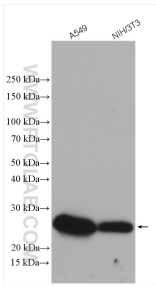
E: [Proteintech-CN@ptglab.com](mailto:Proteintech-CN@ptglab.com)W: [ptgcn.com](http://ptgcn.com)

This product is exclusively available under Proteintech Group brand and is not available to purchase from any other manufacturer.

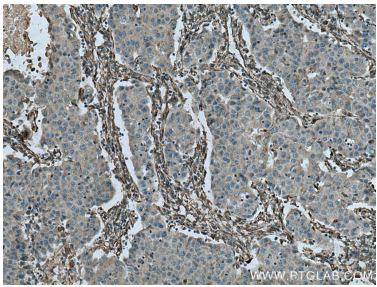
Selected Validation Data



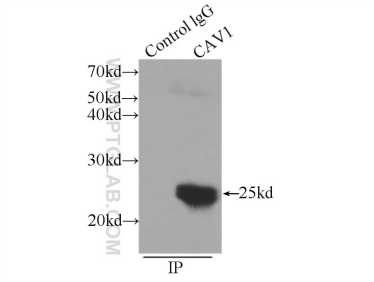
WB result of Caveolin-1 antibody (16447-1-AP; 1:3000; incubated at room temperature for 1.5 hours) with sh-Control and sh-Caveolin-1 transfected HeLa cells.



Various lysates were subjected to SDS PAGE followed by western blot with 16447-1-AP (Caveolin-1 antibody) at dilution of 1:1000 incubated at room temperature for 1.5 hours.



Immunohistochemical analysis of paraffin-embedded human breast cancer tissue slide using 16447-1-AP (Caveolin-1 antibody) at dilution of 1:200 (under 10x lens). Heat mediated antigen retrieval with Tris-EDTA buffer (pH 9.0).



IP result of anti-Caveolin-1 (IP:16447-1-AP, 3ug; Detection:16447-1-AP 1:500) with A549 cells lysate 1200ug.