

CCKBR-specific Polyclonal antibody

Catalog Number: 16549-1-AP

2 Publications

Basic Information

Catalog Number:

16549-1-AP

Size:

300 µg/ml

Source:

Rabbit

Isotype:

IgG

GenBank Accession Number:

NM_176875

GeneID (NCBI):

887

UNIPROT ID:

P32239

Full Name:

cholecystokinin B receptor

Calculated MW:

56 kDa

Observed MW:

64 kDa, 50 kDa

Purification Method:

Antigen affinity purification

Recommended Dilutions:

WB 1:500-1:1000

IF 1:10-1:100

Applications

Tested Applications:

IF/ICC, WB, ELISA

Cited Applications:

WB, IF, IHC

Species Specificity:

human

Cited Species:

human

Positive Controls:

WB : BxPC-3 cells, human stomach tissue, SGC-7901 cells

IF : BxPC-3 cells,

Background Information

The cholecystokinin B receptor (CCKBR) is a G-protein coupled receptor for gastrin and cholecystokinin (CCK), regulatory peptides of the brain and gastrointestinal tract. This protein is a type B gastrin receptor, which has a high affinity for both sulfated and nonsulfated CCK analogs and is found principally in the central nervous system and the gastrointestinal tract. A misspliced transcript variant including an intron has been observed in cells from colorectal and pancreatic tumors.

Notable Publications

Author	Pubmed ID	Journal	Application
Jiang Chang	33998814	Mol Pharm	WB, IHC
Jiang Chang	32488497	J Cancer Res Clin Oncol	IF

Storage

Storage:

Store at -20°C. Stable for one year after shipment.

Storage Buffer:

PBS with 0.02% sodium azide and 50% glycerol pH 7.3.

Aliquoting is unnecessary for -20°C storage

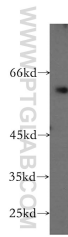
For technical support and original validation data for this product please contact:

T: 4006900926

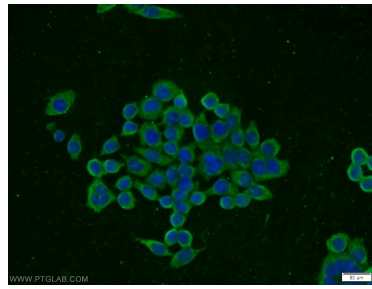
E: Proteintech-CN@ptglab.comW: ptgcn.com

This product is exclusively available under Proteintech Group brand and is not available to purchase from any other manufacturer.

Selected Validation Data



BxPC-3 cells were subjected to SDS PAGE followed by western blot with 16549-1-AP (CCKBR-specific antibody) at dilution of 1:300 incubated at room temperature for 1.5 hours.



Immunofluorescent analysis of BxPC-3 cells using 16549-1-AP (CCKBR-specific antibody) at dilution of 1:25 and Alexa Fluor 488-conjugated AffiniPure Goat Anti-Rabbit IgG(H+L).