

For Research Use Only

# CTSZ Polyclonal antibody

Catalog Number: 16578-1-AP **1 Publications**



## Basic Information

**Catalog Number:**

16578-1-AP

**Size:**

400 µg/ml

**Source:**

Rabbit

**Isotype:**

IgG

**Immunogen Catalog Number:**

AG9865

**GenBank Accession Number:**

BC042168

**GeneID (NCBI):**

1522

**UNIPROT ID:**

Q9UBR2

**Full Name:**

cathepsin Z

**Calculated MW:**

303 aa, 34 kDa

**Observed MW:**

34-37 kDa

**Purification Method:**

Antigen affinity purification

**Recommended Dilutions:**

WB 1:500-1:3000

IP 0.5-4.0 µg for 1.0-3.0 mg of total protein lysate

IHC 1:50-1:500

## Applications

**Tested Applications:**

IHC, IP, WB, ELISA

**Cited Applications:**

WB

**Species Specificity:**

human, mouse, rat

**Cited Species:**

human

**Note-IHC: suggested antigen retrieval with TE buffer pH 9.0; (\*) Alternatively, antigen retrieval may be performed with citrate buffer pH 6.0**

**Positive Controls:**

WB : HeLa cells, mouse heart tissue

IP : HeLa cells,

IHC : human pancreas tissue,

## Background Information

### Notable Publications

Author	Pubmed ID	Journal	Application
Hongwei Chu	34932315	Anal Chem	WB

## Storage

**Storage:**

Store at -20°C. Stable for one year after shipment.

**Storage Buffer:**

PBS with 0.02% sodium azide and 50% glycerol pH 7.3.

Aliquoting is unnecessary for -20°C storage

For technical support and original validation data for this product please contact:

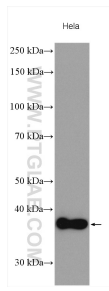
T: 4006900926

E: Proteintech-CN@ptglab.com

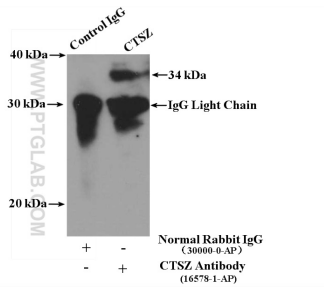
W: ptgcn.com

**This product is exclusively available under Proteintech Group brand and is not available to purchase from any other manufacturer.**

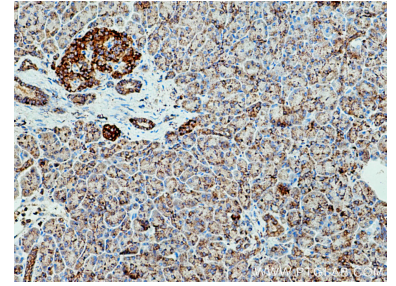
## Selected Validation Data



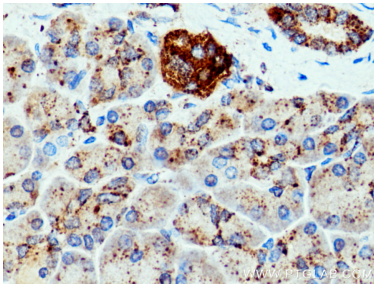
HeLa cells were subjected to SDS PAGE followed by western blot with 16578-1-AP (CTSZ antibody) at dilution of 1:1500 incubated at room temperature for 1.5 hours.



IP result of anti-CTSZ (IP:16578-1-AP, 4ug; Detection:16578-1-AP 1:300) with HeLa cells lysate 2500ug.



Immunohistochemical analysis of paraffin-embedded human pancreas tissue slide using 16578-1-AP (CTSZ antibody) at dilution of 1:200 (under 10x lens). Heat mediated antigen retrieval with Tris-EDTA buffer (pH 9.0).



Immunohistochemical analysis of paraffin-embedded human pancreas tissue slide using 16578-1-AP (CTSZ antibody) at dilution of 1:200 (under 40x lens). Heat mediated antigen retrieval with Tris-EDTA buffer (pH 9.0).