

For Research Use Only

# COPS7A Polyclonal antibody

Catalog Number: 16628-1-AP



## Basic Information

### Catalog Number:

16628-1-AP

### Concentration:

350 ug/ml

### Source:

Rabbit

### Isotype:

IgG

### Immunogen Catalog Number:

AG9958

### GenBank Accession Number:

BC011789

### GeneID (NCBI):

50813

### UNIPROT ID:

Q9UBW8

### Full Name:

COP9 constitutive photomorphogenic homolog subunit 7A (Arabidopsis)

### Calculated MW:

275 aa, 30 kDa

### Observed MW:

30 kDa

### Purification Method:

Antigen affinity purification

### Recommended Dilutions:

WB 1:1000-1:5000

IP 0.5-4.0 ug for 1.0-3.0 mg of total protein lysate

IHC 1:50-1:500

IF/ICC 1:50-1:500

## Applications

### Tested Applications:

WB, IHC, IF/ICC, IP, ELISA

### Species Specificity:

human, mouse, rat

**Note-IHC: suggested antigen retrieval with TE buffer pH 9.0; (\*) Alternatively, antigen retrieval may be performed with citrate buffer pH 6.0**

### Positive Controls:

WB: RAW 264.7 cells, mouse brain tissue, PC-12 cells, HeLa cells, rat brain tissue

IP: HeLa cells,

IHC: mouse brain tissue,

IF/ICC: MCF-7 cells,

## Background Information

COPS7A is component of the COP9 signalosome complex (CSN), a complex involved in various cellular and developmental processes. COPS7A was consistently expressed in oligodendrocyte lineage cells, and was down-regulated during the peak period of myelination. COPS7A associated physically with Olig1, and it might thus serve as a novel negative regulator in oligodendrocytes differentiation.

## Storage

### Storage:

Store at -20°C. Stable for one year after shipment.

### Storage Buffer:

PBS with 0.02% sodium azide and 50% glycerol, pH7.3

Aliquoting is unnecessary for -20°C storage

For technical support and original validation data for this product please contact:

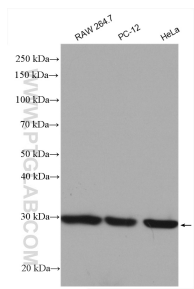
T: 4006900926

E: [Proteintech-CN@ptglab.com](mailto:Proteintech-CN@ptglab.com)

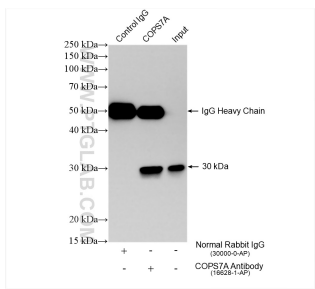
W: [ptgcn.com](http://ptgcn.com)

This product is exclusively available under Proteintech Group brand and is not available to purchase from any other manufacturer.

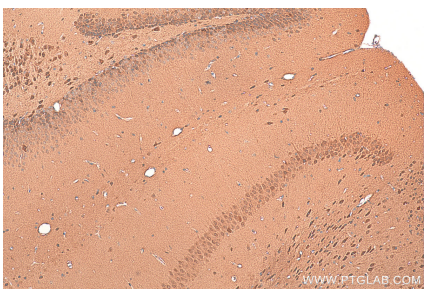
Selected Validation Data



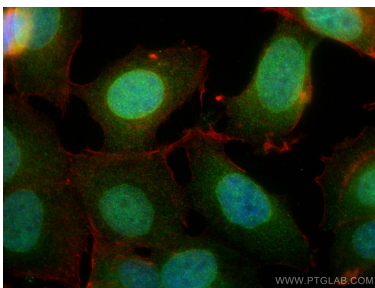
Various lysates were subjected to SDS PAGE followed by western blot with 16628-1-AP (COPS7A antibody) at dilution of 1:2500 incubated at room temperature for 1.5 hours.



IP result of anti-COPS7A (IP:16628-1-AP, 4ug; Detection:16628-1-AP 1:5000) with HeLa cells lysate 1600 ug.



Immunohistochemical analysis of paraffin-embedded mouse brain tissue slide using 16628-1-AP (COPS7A antibody) at dilution of 1:200 (under 10x lens). Heat mediated antigen retrieval with Tris-EDTA buffer (pH 9.0).



Immunofluorescent analysis of (4% PFA) fixed MCF-7 cells using COPS7A antibody (16628-1-AP) at dilution of 1:200 and CoraLite®488-Conjugated AffiniPure Goat Anti-Rabbit IgG(H+L), CL594-Phalloidin (red).