

For Research Use Only

# LITAF Polyclonal antibody

Catalog Number: 16797-1-AP

Featured Product

2 Publications



## Basic Information

**Catalog Number:**

16797-1-AP

**Size:**

500 µg/ml

**Source:**

Rabbit

**Isotype:**

IgG

**Immunogen Catalog Number:**

AG10269

**GenBank Accession Number:**

BC008309

**GeneID (NCBI):**

9516

**UNIPROT ID:**

Q99732

**Full Name:**

lipopolysaccharide-induced TNF factor

**Calculated MW:**

161 aa, 17 kDa

**Observed MW:**

24 kDa

**Purification Method:**

Antigen affinity purification

**Recommended Dilutions:**

WB 1:500-1:3000

IP 0.5-4.0 µg for 1.0-3.0 mg of total protein lysate

IHC 1:20-1:200

IF 1:50-1:500

## Applications

**Tested Applications:**

IF/ICC, IHC, IP, WB, ELISA

**Cited Applications:**

WB, IHC

**Species Specificity:**

human

**Cited Species:**

human

**Note-IHC: suggested antigen retrieval with TE buffer pH 9.0; (\*) Alternatively, antigen retrieval may be performed with citrate buffer pH 6.0**

**Positive Controls:**

WB : HeLa cells, HepG2 cells

IP : HeLa cells,

IHC : human spleen tissue,

IF : HepG2 cells,

## Background Information

Lipopolysaccharide-induced TNF factor(LITAF) is a transcription factor that identified as a regulator of TNF-alpha gene expression. It may has a role in protein degradation pathways and in tumor necrosis factor alpha(TNF-alpha) gene expression. Also it may regulate the expression of the CCL2/MCP-1 chemokine through NFKB1. Defects in LITAF may be involved in extramammary Paget disease (EMPD) carcinogenesis

## Notable Publications

Author	Pubmed ID	Journal	Application
Changlin Huang	31098771	Cell Mol Neurobiol	WB
Shu Zhang	37612267	Nat Commun	IHC

## Storage

**Storage:**

Store at -20°C. Stable for one year after shipment.

**Storage Buffer:**

PBS with 0.02% sodium azide and 50% glycerol pH 7.3.

Aliquoting is unnecessary for -20°C storage

For technical support and original validation data for this product please contact:

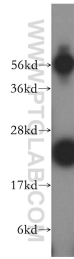
T: 4006900926

E: Proteintech-CN@ptglab.com

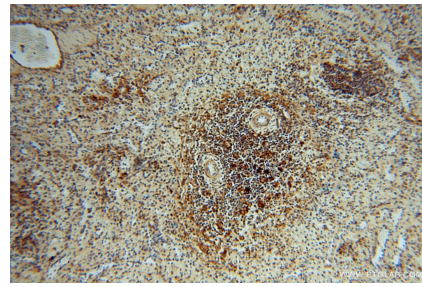
W: ptgcn.com

**This product is exclusively available under Proteintech Group brand and is not available to purchase from any other manufacturer.**

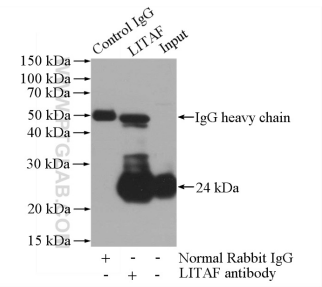
## Selected Validation Data



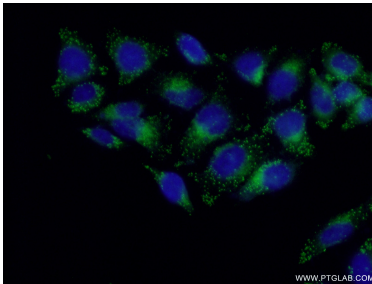
HeLa cells were subjected to SDS PAGE followed by western blot with 16797-1-AP (LITAF antibody) at dilution of 1:500 incubated at room temperature for 1.5 hours.



Immunohistochemical analysis of paraffin-embedded human spleen using 16797-1-AP (LITAF antibody) at dilution of 1:100 (under 10x lens).



IP result of anti-LITAF (IP:16797-1-AP, 4 $\mu$ g; Detection:16797-1-AP 1:600) with HeLa cells lysate 1520 $\mu$ g.



Immunofluorescent analysis of (-20 $^{\circ}$ C Ethanol) fixed HepG2 cells using 16797-1-AP (LITAF antibody) at dilution of 1:50 and Alexa Fluor 488-conjugated AffiniPure Goat Anti-Rabbit IgG(H+L).