

For Research Use Only

# HLA-G Polyclonal antibody

Catalog Number: 16913-1-AP **3 Publications**



## Basic Information

<b>Catalog Number:</b> 16913-1-AP	<b>GenBank Accession Number:</b> BC021708	<b>Purification Method:</b> Antigen affinity purification
<b>Size:</b> 300 µg/ml	<b>GeneID (NCBI):</b> 3135	<b>Recommended Dilutions:</b> WB 1:1000-1:4000
<b>Source:</b> Rabbit	<b>UNIPROT ID:</b> P17693	
<b>Isotype:</b> IgG	<b>Full Name:</b> major histocompatibility complex, class I, G	
<b>Immunogen Catalog Number:</b> AG10577	<b>Calculated MW:</b> 338 aa, 38 kDa	
	<b>Observed MW:</b> 33-45 kDa	

## Applications

<b>Tested Applications:</b> WB, ELISA	<b>Positive Controls:</b> WB : human placenta tissue,
<b>Cited Applications:</b> IHC, WB	
<b>Species Specificity:</b> human	
<b>Cited Species:</b> human	

## Background Information

Human major histocompatibility complex (MHC) antigens, also referred to as human leukocyte antigens (HLA), are encoded by genes located on the short arm of chromosome 6 (6p21.3). HLA-G is a non-classical MHC class I molecule with multiple immunoregulatory properties. HLA-G exhibits a restricted pattern of expression that includes placental extravillous trophoblasts at the maternal-fetal interface, where it abolishes maternal immune cell activity against fetus and establishes immune tolerance. Aberrant expression of HLA-G has been found in a variety of human neoplastic diseases. It plays an important role in the escape of tumor cells from immunosurveillance.

## Notable Publications

Author	Pubmed ID	Journal	Application
Zhi Chen	34105233	Aging Cell	IHC
Xinyuan Cui	31889361	Cell Prolif	WB
Jiayu Wang	34489969	Front Immunol	IHC

## Storage

**Storage:**  
Store at -20°C. Stable for one year after shipment.  
**Storage Buffer:**  
PBS with 0.02% sodium azide and 50% glycerol pH 7.3.  
Aliquoting is unnecessary for -20°C storage

For technical support and original validation data for this product please contact:

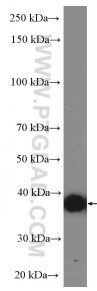
T: 4006900926

E: [Proteintech-CN@ptglab.com](mailto:Proteintech-CN@ptglab.com)

W: [ptgcn.com](http://ptgcn.com)

**This product is exclusively available under Proteintech Group brand and is not available to purchase from any other manufacturer.**

## Selected Validation Data



human placenta tissue were subjected to SDS PAGE followed by western blot with 16913-1-AP (HLA-G Antibody) at dilution of 1:2000 incubated at room temperature for 1.5 hours.