

For Research Use Only

# CD14 Polyclonal antibody

Catalog Number: 17000-1-AP **54 Publications**



## Basic Information

<b>Catalog Number:</b> 17000-1-AP	<b>GenBank Accession Number:</b> BC010507	<b>Purification Method:</b> Antigen affinity purification
<b>Size:</b> 500 µg/ml	<b>GeneID (NCBI):</b> 929	<b>Recommended Dilutions:</b> WB 1:500-1:1000 IHC 1:1000-1:4000 IF 1:50-1:500
<b>Source:</b> Rabbit	<b>ENSEMBL Gene ID:</b> ENSG00000170458	
<b>Isotype:</b> IgG	<b>UNIPROT ID:</b> P08571	
<b>Immunogen Catalog Number:</b> AG10693	<b>Full Name:</b> CD14 molecule	
	<b>Calculated MW:</b> 375 aa, 40 kDa	
	<b>Observed MW:</b> 50-55 kDa	

## Applications

**Tested Applications:**  
FC, IF/ICC, IHC, WB, ELISA

**Cited Applications:**  
WB, IHC, IF, FC

**Species Specificity:**  
human, mouse

**Cited Species:**  
human, RAT, mouse, pig

**Note-IHC: suggested antigen retrieval with TE buffer pH 9.0; (\*) Alternatively, antigen retrieval may be performed with citrate buffer pH 6.0**

**Positive Controls:**

**WB:** HL-60 cells, RAW 264.7 cells, human spleen tissue

**IHC:** human hepatocirrhosis tissue, human appendicitis tissue, human tonsillitis tissue

**IF:** RAW 264.7 cells,

## Background Information

CD14 is a 50-55 kDa glycosylphosphatidylinositol-anchored glycoprotein preferentially expressed on monocytes and macrophages, and at lower levels on granulocytes (PMID: 3385210; 2462937; 7685797). CD14 can also exist as a soluble protein. CD14 acts as a co-receptor for bacterial liposaccharides (LPS) (PMID: 1698311). It plays a major role in the inflammatory response of monocytes to LPS.

## Notable Publications

Author	Pubmed ID	Journal	Application
Su Jin Kim	32875703	EMBO Rep	IF
Xuxin Chen	30362554	J Cell Physiol	FC
Hon-Kan Yip	33162819	Int J Biol Sci	IF

## Storage

**Storage:**  
Store at -20°C. Stable for one year after shipment.  
**Storage Buffer:**  
PBS with 0.02% sodium azide and 50% glycerol pH 7.3.  
Aliquoting is unnecessary for -20°C storage

For technical support and original validation data for this product please contact:

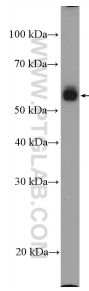
T: 4006900926

E: Proteintech-CN@ptglab.com

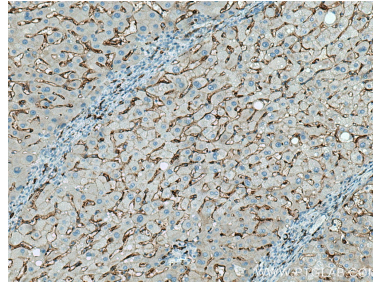
W: ptgcn.com

**This product is exclusively available under Proteintech Group brand and is not available to purchase from any other manufacturer.**

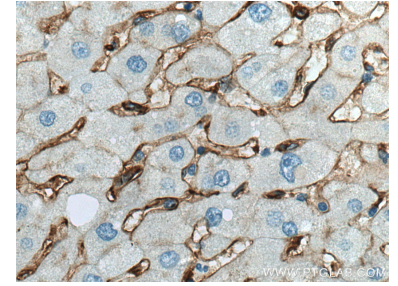
## Selected Validation Data



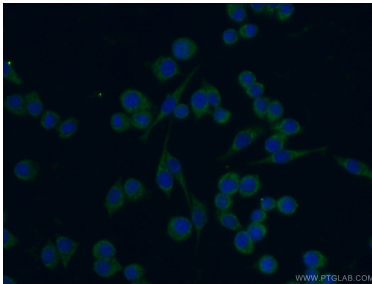
HL-60 cells were subjected to SDS PAGE followed by western blot with 17000-1-AP (CD14 Antibody) at dilution of 1:600 incubated at room temperature for 1.5 hours.



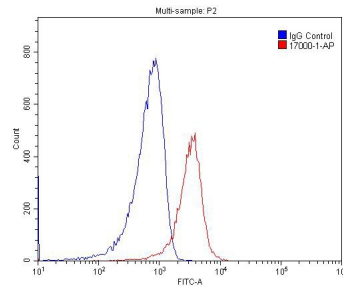
Immunohistochemical analysis of paraffin-embedded human hepatocirrhosis tissue slide using 17000-1-AP (CD14 antibody) at dilution of 1:2000 (under 10x lens). Heat mediated antigen retrieval with Tris-EDTA buffer (pH 9.0).



Immunohistochemical analysis of paraffin-embedded human hepatocirrhosis tissue slide using 17000-1-AP (CD14 antibody) at dilution of 1:2000 (under 40x lens). Heat mediated antigen retrieval with Tris-EDTA buffer (pH 9.0).



Immunofluorescent analysis of (-20°C Ethanol) fixed RAW 264.7 cells using 17000-1-AP (CD14 antibody) at dilution of 1:50 and Alexa Fluor 488-conjugated AffiniPure Goat Anti-Rabbit IgG(H+L).



1X10<sup>6</sup> RAW 264.7 cells were stained with 0.2ug CD14 antibody (17000-1-AP, red) and control antibody (blue). Fixed with 4% PFA blocked with 3% BSA (30 min). Alexa Fluor 488-conjugated AffiniPure Goat Anti-Rabbit IgG(H+L) with dilution 1:1500.