

For Research Use Only

ATPB Polyclonal antibody

Catalog Number: 17247-1-AP

Featured Product

50 Publications



Basic Information

Catalog Number:

17247-1-AP

Size:

450 µg/ml

Source:

Rabbit

Isotype:

IgG

Immunogen Catalog Number:

AG11177

GenBank Accession Number:

BC016512

GeneID (NCBI):

506

UNIPROT ID:

P06576

Full Name:

ATP synthase, H⁺ transporting, mitochondrial F1 complex, beta polypeptide

Calculated MW:

529 aa, 57 kDa

Observed MW:

45-57 kDa

Purification Method:

Antigen affinity purification

Recommended Dilutions:

WB 1:1000-1:6000

IP 0.5-4.0 µg for 1.0-3.0 mg of total protein lysate

IHC 1:100-1:400

IF 1:200-1:800

Applications

Tested Applications:

IF/ICC, IHC, IP, WB, ELISA

Cited Applications:

WB, IP, IF, IHC

Species Specificity:

human, mouse, rat

Cited Species:

human, rat, mouse

Positive Controls:

WB: HEK-293T cells, HeLa cells, HT-29 cells, HepG2 cells, mouse brain tissue

IP: mouse heart tissue,

IHC: human liver tissue,

IF: HeLa cells,

Note-IHC: suggested antigen retrieval with **TE buffer pH 9.0; (*) Alternatively, antigen retrieval may be performed with citrate buffer pH 6.0**

Background Information

ATP5B, also named as ATPMB and ATP5B, belongs to the ATPase alpha/beta chains family. It is a high affinity HDL receptor for apolipoprotein A1. ATP5B is a subunit of mitochondrial ATP synthase (F1F0 ATP synthase or Complex V). ATP5B has a calculated molecular mass of 57 kDa and ~5 kDa transit peptide can be removed in the mature form.

Notable Publications

Author	Pubmed ID	Journal	Application
Bettina Rieger	34595823	EMBO Rep	WB
Jiayu Song	36193064	Oxid Med Cell Longev	WB
Yutong Shang	36104602	Acta Neuropathol	WB

Storage

Storage:

Store at -20°C. Stable for one year after shipment.

Storage Buffer:

PBS with 0.02% sodium azide and 50% glycerol pH 7.3.

Aliquoting is unnecessary for -20°C storage

For technical support and original validation data for this product please contact:

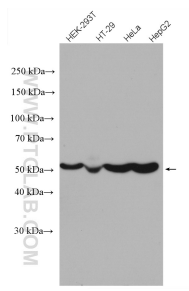
T: 4006900926

E: Proteintech-CN@ptglab.com

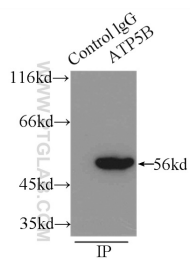
W: ptgcn.com

This product is exclusively available under Proteintech Group brand and is not available to purchase from any other manufacturer.

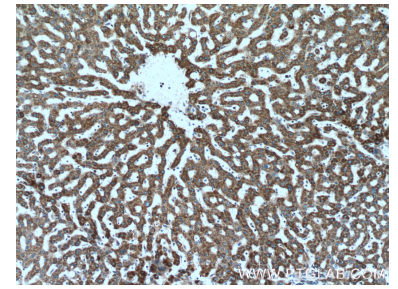
Selected Validation Data



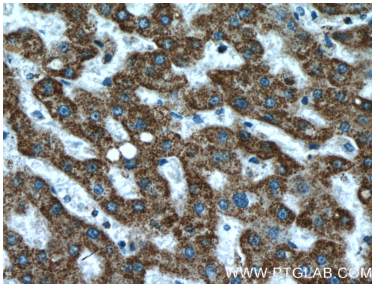
Various lysates were subjected to SDS PAGE followed by western blot with 17247-1-AP (ATPB antibody) at dilution of 1:3000 incubated at room temperature for 1.5 hours.



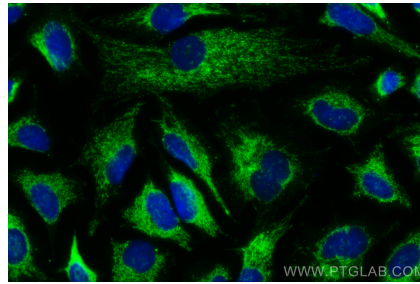
IP result of anti-ATPB (IP:17247-1-AP, 3ug; Detection:17247-1-AP 1:500) with mouse heart tissue lysate 7500ug.



Immunohistochemical analysis of paraffin-embedded human liver tissue slide using 17247-1-AP (ATPB Antibody) at dilution of 1:200 (under 10x lens).



Immunohistochemical analysis of paraffin-embedded human liver tissue slide using 17247-1-AP (ATPB Antibody) at dilution of 1:200 (under 40x lens).



Immunofluorescent analysis of (4% PFA) fixed HeLa cells using ATPB antibody (17247-1-AP) at dilution of 1:400 and CoraLite@488-Conjugated AffiniPure Goat Anti-Rabbit IgG(H+L).