

For Research Use Only

# C1R Polyclonal antibody

Catalog Number: 17346-1-AP **1 Publications**



## Basic Information

<b>Catalog Number:</b> 17346-1-AP	<b>GenBank Accession Number:</b> BC035220	<b>Purification Method:</b> Antigen affinity purification
<b>Size:</b> 700 µg/ml	<b>GeneID (NCBI):</b> 715	<b>Recommended Dilutions:</b> WB 1:500-1:2000 IHC 1:50-1:500
<b>Source:</b> Rabbit	<b>UNIPROT ID:</b> P00736	
<b>Isotype:</b> IgG	<b>Full Name:</b> complement component 1, r subcomponent	
<b>Immunogen Catalog Number:</b> AG11390	<b>Calculated MW:</b> 705 aa, 80 kDa	
	<b>Observed MW:</b> 85 kDa, 30 kDa	

## Applications

<b>Tested Applications:</b> IHC, WB, ELISA	<b>Positive Controls:</b> WB : human blood tissue, IHC : human liver tissue,
<b>Cited Applications:</b> WB	
<b>Species Specificity:</b> human	
<b>Cited Species:</b> human	

**Note-IHC: suggested antigen retrieval with TE buffer pH 9.0; (\*) Alternatively, antigen retrieval may be performed with citrate buffer pH 6.0**

## Background Information

The first component of complement is a calcium-dependent complex of the 3 subcomponents C1q, C1r, and C1s. The serine protease subunits C1r and C1s form a Ca(2+)-dependent C1s-C1r-C1r-C1s tetramer. C1r acts by transforming the activation signal into an enzymic activity. C1r is a single-chain glycoprotein which can be cleaved into an A chain and a B chain upon activation. This antibody recognizes full-length C1r chain and the cleaved B chain.

## Notable Publications

Author	Pubmed ID	Journal	Application
Anika Alberts	32286427	Sci Rep	WB

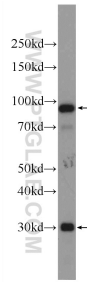
## Storage

**Storage:**  
Store at -20°C. Stable for one year after shipment.  
**Storage Buffer:**  
PBS with 0.02% sodium azide and 50% glycerol pH 7.3.  
Aliquoting is unnecessary for -20°C storage

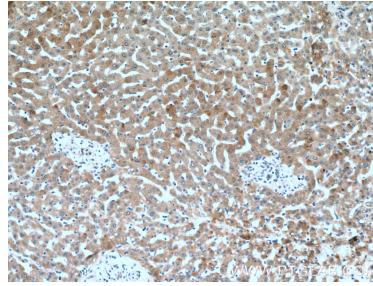
For technical support and original validation data for this product please contact:  
T: 4006900926 E: Proteintech-CN@ptglab.com W: ptgcn.com

**This product is exclusively available under Proteintech Group brand and is not available to purchase from any other manufacturer.**

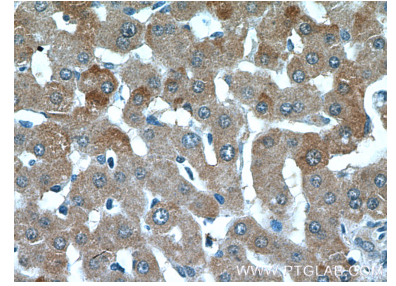
## Selected Validation Data



human blood were subjected to SDS PAGE followed by western blot with 17346-1-AP (C1R Antibody) at dilution of 1:1000 incubated at room temperature for 1.5 hours.



Immunohistochemical analysis of paraffin-embedded human liver tissue slide using 17346-1-AP (C1R Antibody) at dilution of 1:200 (under 10x lens).



Immunohistochemical analysis of paraffin-embedded human liver tissue slide using 17346-1-AP (C1R Antibody) at dilution of 1:200 (under 40x lens).