

For Research Use Only

CHDH Polyclonal antibody

Catalog Number: 17356-1-AP

Featured Product

5 Publications



Basic Information

Catalog Number: 17356-1-AP	GenBank Accession Number: BC034502	Purification Method: Antigen affinity purification
Size: 450 µg/ml	GeneID (NCBI): 55349	Recommended Dilutions: WB 1:2000-1:6000 IHC 1:50-1:500
Source: Rabbit	UNIPROT ID: Q8NE62	
Isotype: IgG	Full Name: choline dehydrogenase	
Immunogen Catalog Number: AG10614	Calculated MW: 594 aa, 65 kDa	
	Observed MW: 60 kDa	

Applications

Tested Applications: IHC, WB, ELISA	Positive Controls: WB : rat liver tissue, mouse kidney tissue, mouse liver tissue IHC : human liver cancer tissue,
Cited Applications: WB, IHC, IF	
Species Specificity: human, mouse, rat	
Cited Species: human, mouse	
Note-IHC: suggested antigen retrieval with TE buffer pH 9.0; (*) Alternatively, antigen retrieval may be performed with citrate buffer pH 6.0	

Background Information

CHDH (Choline dehydrogenase, mitochondrial) is also named as CDH, CHD and belongs to the GMC oxidoreductase family. CHDH is a member of the glucose-methanol-choline family of oxidoreductases, with each member containing a consensus FAD-binding domain. Many members of this oxidoreductase family are soluble proteins but mammalian CHDH is associated with the inner mitochondrial membrane (Handbook of vitamins, Robert B, 2007). The full length protein (65 kDa) has a transit peptide of 29 amino acid and the mature CHDH is appropriately located in the inner mitochondrial membrane (PMID:12951056). 17356-1-AP can also recognize the 45 kDa isoform X3 of CHDH.

Notable Publications

Author	Pubmed ID	Journal	Application
Taylor McClatchie	28663368	J Biol Chem	WB
Johnson Amy RAR	22558321	PLoS One	IHC
Xuyong Wei	35430532	Transl Oncol	IHC

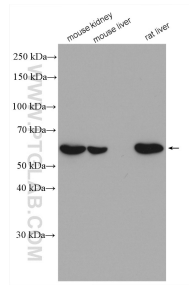
Storage

Storage:
Store at -20°C. Stable for one year after shipment.
Storage Buffer:
PBS with 0.02% sodium azide and 50% glycerol pH 7.3.
Aliquoting is unnecessary for -20°C storage

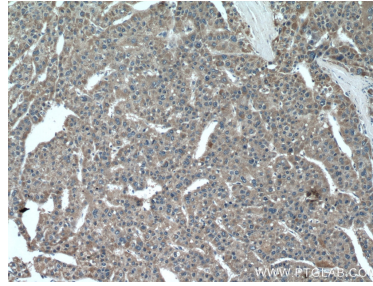
For technical support and original validation data for this product please contact:
T: 4006900926 E: Proteintech-CN@ptglab.com W: ptgcn.com

This product is exclusively available under Proteintech Group brand and is not available to purchase from any other manufacturer.

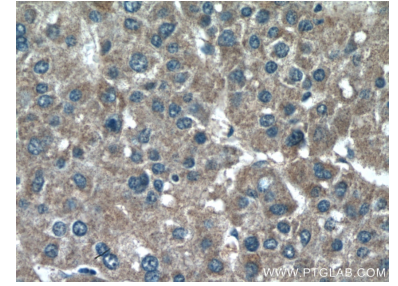
Selected Validation Data



Various lysates were subjected to SDS PAGE followed by western blot with 17356-1-AP (CHDH antibody) at dilution of 1:5000 incubated at room temperature for 1.5 hours.



Immunohistochemical analysis of paraffin-embedded human liver cancer tissue slide using 17356-1-AP (CHDH antibody) at dilution of 1:200 (under 10x lens).



Immunohistochemical analysis of paraffin-embedded human liver cancer tissue slide using 17356-1-AP (CHDH antibody) at dilution of 1:200 (under 40x lens).