

For Research Use Only

MME,CD10 Polyclonal antibody

Catalog Number: 18008-1-AP **18 Publications**



Basic Information

Catalog Number: 18008-1-AP	GenBank Accession Number: BC106070	Purification Method: Antigen affinity purification
Size: 600 µg/ml	GeneID (NCBI): 4311	Recommended Dilutions: WB 1:500-1:2000
Source: Rabbit	UNIPROT ID: P08473	IP 0.5-4.0 µg for 1.0-3.0 mg of total protein lysate
Isotype: IgG	Full Name: membrane metallo-endopeptidase	IHC 1:50-1:500
Immunogen Catalog Number: AG12506	Calculated MW: 80aa,9 kDa; 750aa,85 kDa	IF 1:50-1:500
	Observed MW: 100 kDa	

Applications

Tested Applications: FC, IF/ICC, IHC, IP, WB, ELISA	Positive Controls: WB : mouse kidney tissue, human kidney tissue, rat kidney tissue
Cited Applications: IF, IHC, WB	IP : Raji cells,
Species Specificity: human, mouse, rat	IHC : human kidney tissue, human renal cell carcinoma tissue
Cited Species: human, mouse	IF : human kidney tissue,
Note-IHC: suggested antigen retrieval with TE buffer pH 9.0; (*) Alternatively, antigen retrieval may be performed with citrate buffer pH 6.0	

Background Information

MME is also names as neprilysin,CALLA,NEP,SFE,CD10 and belongs to the peptidase M13 family.It is a glycoprotein that is particularly abundant in kidney, where it is present on the brush border of proximal tubules and on glomerular epithelium.CD10 has been considered a useful marker in the diagnosis of renal carcinomas, because of its expression in clear cell and papillary renal cell carcinomas and its absence in chromophobe renal cell carcinomas(PMID:15286660).

Notable Publications

Author	Pubmed ID	Journal	Application
Ke-Wei Chang	30217465	Neurochem Int	WB
Jensen José Ricardo JR	24148528	BMC Genomics	IHC
Hui Zeng	32473218	Int J Biol Macromol	WB

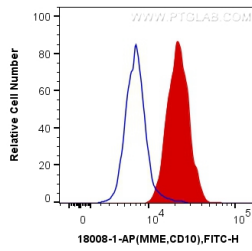
Storage

Storage:
Store at -20°C. Stable for one year after shipment.
Storage Buffer:
PBS with 0.02% sodium azide and 50% glycerol pH 7.3.
Aliquoting is unnecessary for -20°C storage

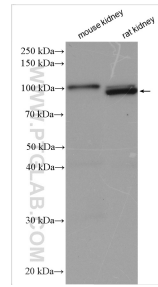
For technical support and original validation data for this product please contact:
T: 4006900926 E: Proteintech-CN@ptglab.com W: ptgcn.com

This product is exclusively available under Proteintech Group brand and is not available to purchase from any other manufacturer.

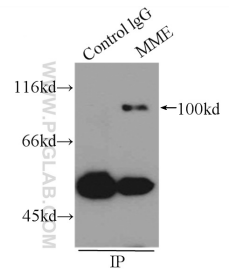
Selected Validation Data



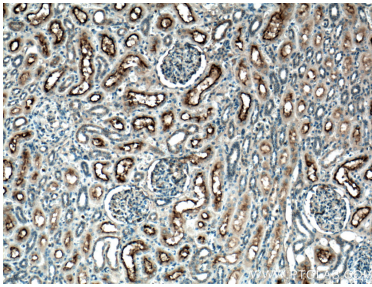
1X10⁶ Ramos cells were intracellularly stained with 0.2 ug Anti-Human MME,CD10 (18008-1-AP) and CoraLite@488-Conjugated AffiniPure Goat Anti-Rabbit IgG(H+L) at dilution 1:1000 (red), or 0.2 ug Control Antibody. Cells were fixed with 4% PFA and permeabilized with Flow Cytometry Perm Buffer (PF00011-C).



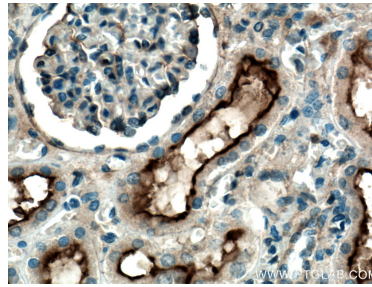
Various lysates were subjected to SDS PAGE followed by western blot with 18008-1-AP (MME,CD10 antibody) at dilution of 1:1000 incubated at room temperature for 1.5 hours.



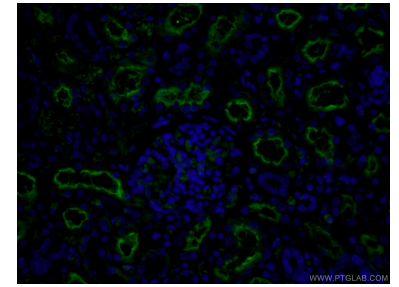
IP result of anti-MME,CD10 (IP:18008-1-AP, 3ug; Detection:18008-1-AP 1:500) with Raji cells lysate 2400ug.



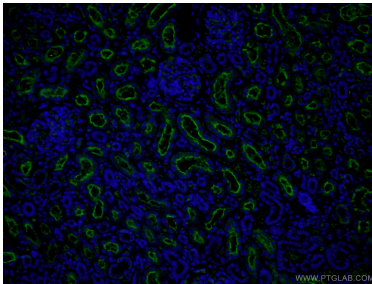
Immunohistochemical analysis of paraffin-embedded human kidney tissue slide using 18008-1-AP (MME,CD10 antibody) at dilution of 1:200 (under 10x lens). Heat mediated antigen retrieval with Tris-EDTA buffer (pH 9.0).



Immunohistochemical analysis of paraffin-embedded human kidney tissue slide using 18008-1-AP (MME,CD10 antibody) at dilution of 1:200 (under 40x lens). Heat mediated antigen retrieval with Tris-EDTA buffer (pH 9.0).



Immunofluorescent analysis of (4% PFA) fixed human kidney tissue using 18008-1-AP (MME,CD10 antibody) at dilution of 1:50 and Alexa Fluor 488-conjugated AffiniPure Goat Anti-Rabbit IgG(H+L).



Immunofluorescent analysis of (4% PFA) fixed human kidney tissue using 18008-1-AP (MME,CD10 antibody) at dilution of 1:50 and Alexa Fluor 488-conjugated AffiniPure Goat Anti-Rabbit IgG(H+L).