

For Research Use Only

GIP Polyclonal antibody

Catalog Number: 18034-1-AP



Basic Information

Catalog Number: 18034-1-AP	GenBank Accession Number: BC069663	Purification Method: Antigen affinity purification
Size: 600 µg/ml	GeneID (NCBI): 2695	Recommended Dilutions: IHC 1:50-1:500
Source: Rabbit	UNIPROT ID: P09681	
Isotype: IgG	Full Name: gastric inhibitory polypeptide	
Immunogen Catalog Number: AG12634	Calculated MW: 153 aa, 17 kDa	

Applications

Tested Applications:
IHC, ELISA

Species Specificity:
human, rat, mouse

Note-IHC: suggested antigen retrieval with TE buffer pH 9.0; (*) Alternatively, antigen retrieval may be performed with citrate buffer pH 6.0

Positive Controls:

IHC: human pancreas tissue, rat pancreas tissue, mouse pancreas tissue, human small intestine tissue

Background Information

GIP is an incretin hormone and belongs to the glucagon superfamily. GIP is important in maintaining glucose homeostasis as it is a potent stimulator of insulin secretion from pancreatic beta-cells following food ingestion and nutrient absorption. GIP stimulates insulin secretion via its G protein-coupled receptor activation of adenylyl cyclase and other signal transduction pathways. It is a relatively poor inhibitor of gastric acid secretion.

Storage

Storage:

Store at -20°C. Stable for one year after shipment.

Storage Buffer:

PBS with 0.02% sodium azide and 50% glycerol pH 7.3.

Aliquoting is unnecessary for -20°C storage

For technical support and original validation data for this product please contact:

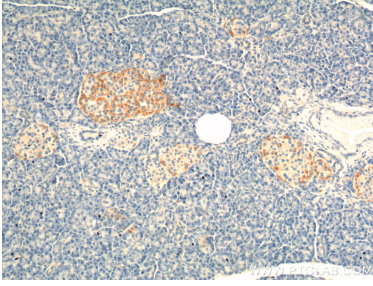
T: 4006900926

E: Proteintech-CN@ptglab.com

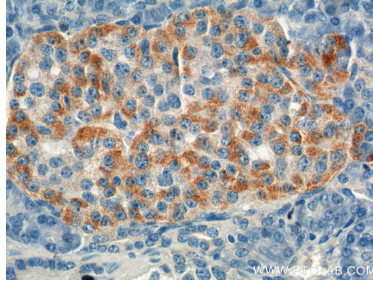
W: ptgcn.com

This product is exclusively available under Proteintech Group brand and is not available to purchase from any other manufacturer.

Selected Validation Data



Immunohistochemical analysis of paraffin-embedded human pancreas tissue slide using 18034-1-AP (GIP Antibody) at dilution of 1:200 (under 10x lens).



Immunohistochemical analysis of paraffin-embedded human pancreas tissue slide using 18034-1-AP (GIP Antibody) at dilution of 1:200 (under 40x lens).